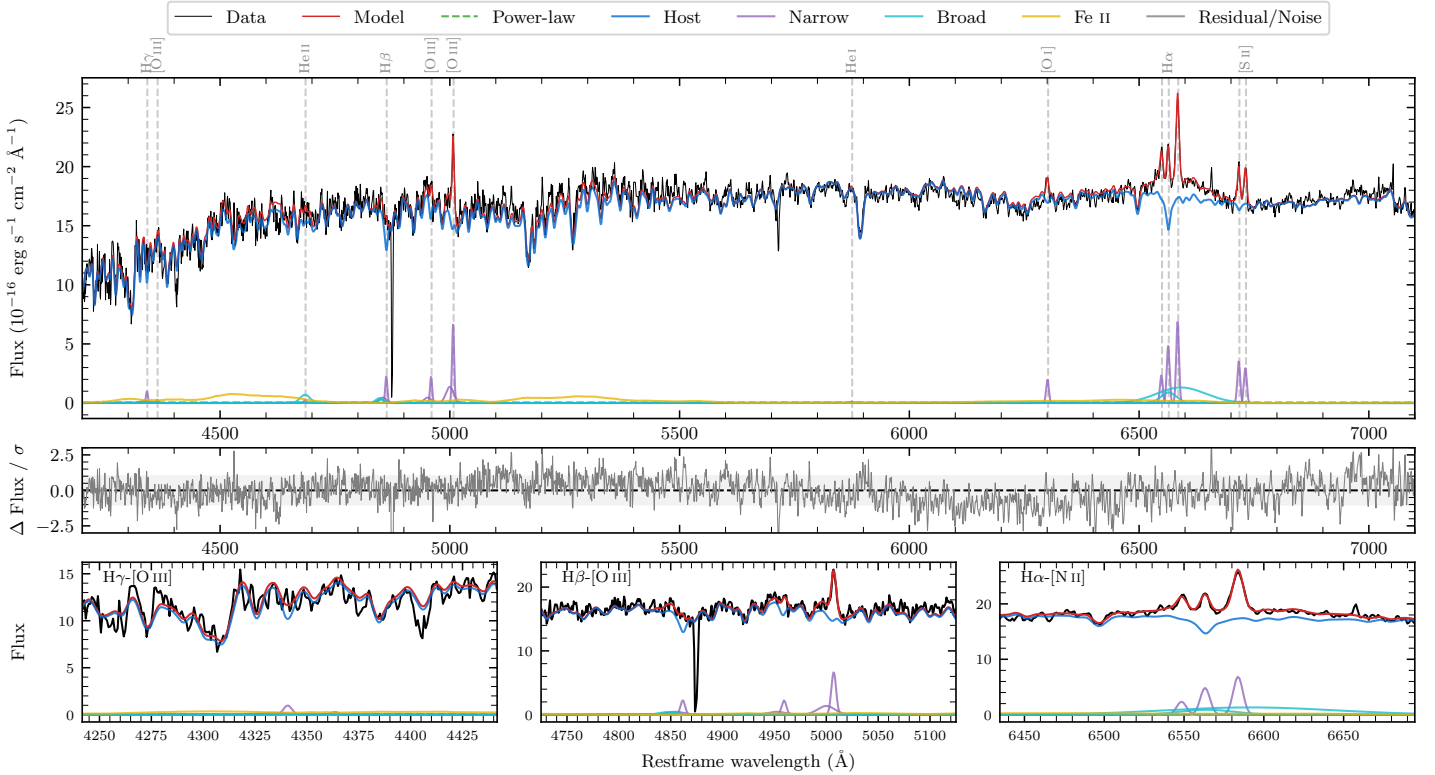
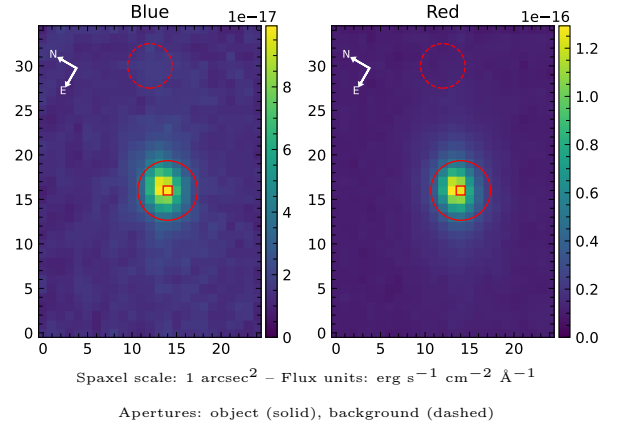


# IC 1494

Spectrum ID	7879624_sp1	Spectrum type	Sy 1.5+
Alt name	g2330462-124328	Quality flag	good
$z$	0.0317	AGN reference	6dFGS
RA, Dec	352.6923, -12.7245	MW $E(B - V)$	0.025
MJD	60179.61	Power law $\alpha_\nu$	$-1.88 \pm 0.10$
SNR/ $\text{\AA}$ B/R	17.2/34.8	$\log L_{5100, \text{AGN}}$	$40.75 \pm 0.66$
Obs airmass	1.08	$\log H\beta_{\text{Br}}/[\text{O III}]$	$< -0.09$
SMSS ID	7879624	$\log M_{L5100}/M_\odot$	—
Neighbour	None $< 15''$	$\log M_{\text{H}\alpha}/M_\odot$	$6.95 \pm 0.12$
SMSS $\langle r_6 \rangle_{\text{ap}}$	$15.39 \pm 0.02$	$\log M_{\text{H}\beta}/M_\odot$	—
2MASS $K_{\text{ext}}$	$11.56 \pm 0.06$	$\log M_{[\text{O III}]} / M_\odot$	—



## Emission Line Measurements

Line	$\log L$ ( $\text{erg s}^{-1}$ )	FWHM ( $\text{km s}^{-1}$ )	$\sigma$ ( $\text{km s}^{-1}$ )	EW ( $\text{\AA}$ )
H $\gamma$ Narrow	$39.31 \pm 0.26$	$362 \pm 63$	$405 \pm 33$	$186.63 \pm 96.91$
<b>H<math>\gamma</math> Broad</b>	—	—	—	—
[O III] 4364	—	—	—	—
He II Narrow	—	—	—	—
<b>He II Broad</b>	<b><math>39.66 \pm 0.21</math></b>	<b><math>1606 \pm 62</math></b>	<b><math>682 \pm 25</math></b>	<b><math>413.07 \pm 102.94</math></b>
H $\beta$ Narrow	$39.73 \pm 0.10$	$362 \pm 63$	$405 \pm 33$	$486.24 \pm 81.27$
<b>H<math>\beta</math> Broad</b>	$< 40.12$	—	—	—
[O III] 5007	$40.21 \pm 0.04$	$362 \pm 63$	$405 \pm 33$	$1485.51 \pm 83.22$
He I Narrow	—	—	—	—
<b>He I Broad</b>	—	—	—	—
[O I] 6300	$39.54 \pm 0.08$	$326 \pm 62$	$138 \pm 25$	$325.19 \pm 29.84$
H $\alpha$ Narrow	$39.95 \pm 0.03$	$326 \pm 62$	$138 \pm 25$	$836.82 \pm 31.11$
<b>H<math>\alpha</math> Broad</b>	<b><math>40.71 \pm 0.03</math></b>	<b><math>4123 \pm 499</math></b>	<b><math>1817 \pm 39</math></b>	<b><math>4853.07 \pm 129.13</math></b>
[N II] 6585	$40.10 \pm 0.02$	$326 \pm 62$	$138 \pm 25$	$1192.15 \pm 31.50$
[S II] 6718	$39.82 \pm 0.04$	$326 \pm 62$	$138 \pm 25$	$627.53 \pm 32.50$
[S II] 6732	$39.75 \pm 0.04$	$326 \pm 62$	$138 \pm 25$	$528.14 \pm 32.64$

## Emission Summary

H $\alpha$ broad SNR	2.22
H $\beta$ broad SNR	0.92
H $\gamma$ broad SNR	0.00
AGN frac	0.00
Host frac	1.00
$\log L_{5100, \text{Host}}$	43.26
Fe II/H $\beta$	—
Fe II/[O III]	2.39

## Quality Flags

spurious_hab/hbb	0/0
15100	2
balmer	2
balmer_snr	2
hb_width	2
balmer_width	2