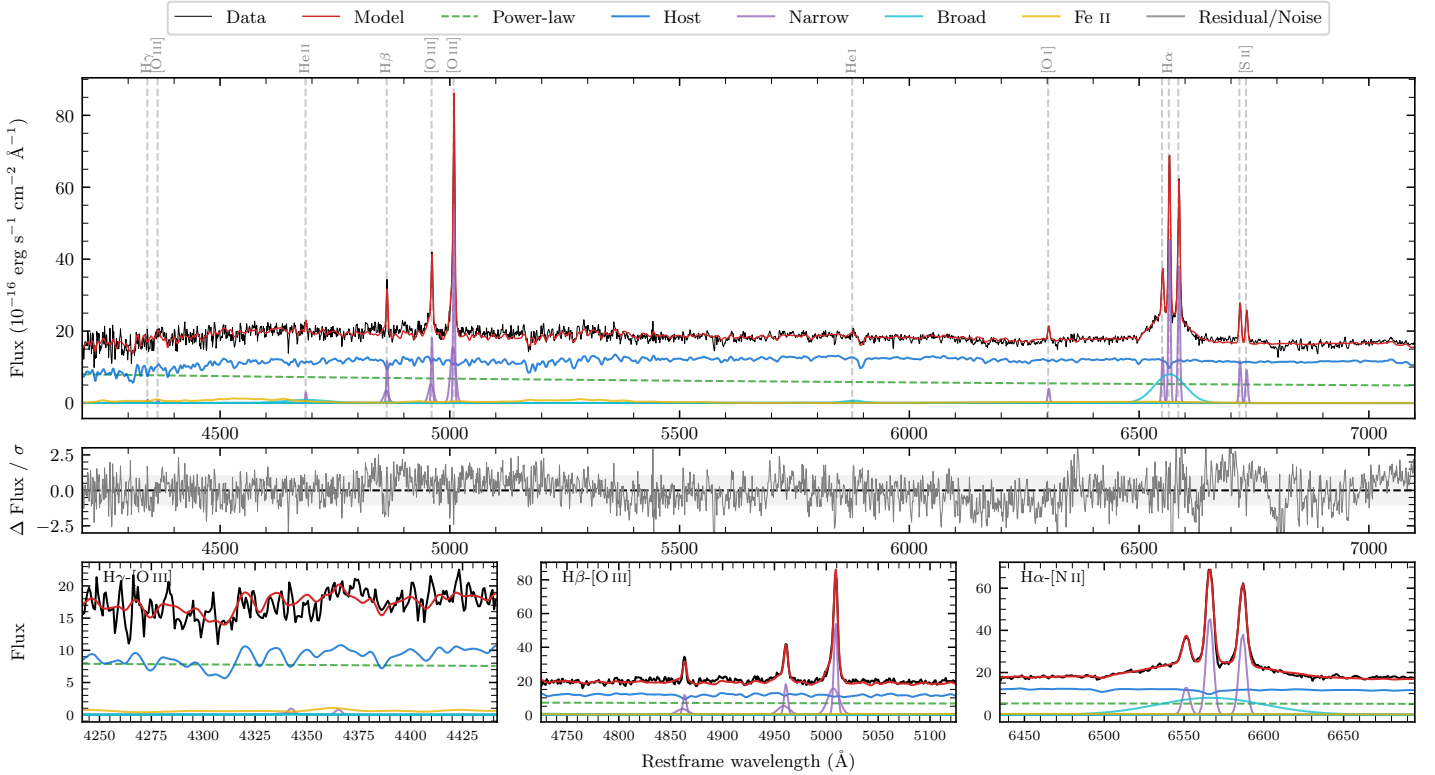
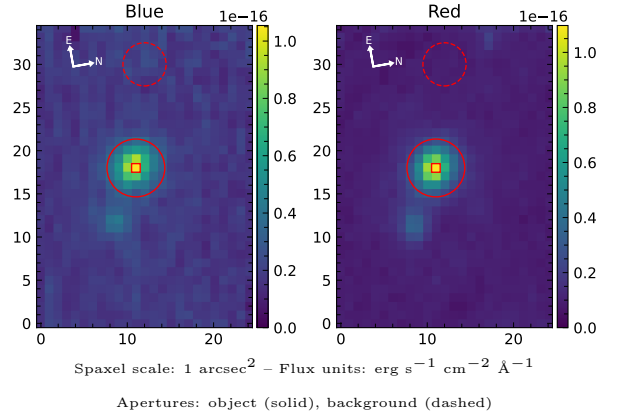


# ESO 372-25

Spectrum ID	78249613_sp2	Spectrum type	Sy 1.8+
Alt name	g0926483-362609	Quality flag	good
$z$	0.0569	AGN reference	6dFGS
RA, Dec	141.7014, -36.4357	MW $E(B-V)$	0.138
MJD	61026.71	Power law $\alpha_\nu$	$-1.07 \pm 0.07$
SNR/ $\text{\AA}$ B/R	13.5/25.8	$\log L_{5100, \text{AGN}}$	$43.42 \pm 0.02$
Obs airmass	1.02	$\log H\beta_{\text{Br}}/[\text{O III}]$	$< -0.71$
SMSS ID	78249613	$\log M_{L5100}/M_\odot$	—
Neighbour	4.8", 2130901452	$\log M_{\text{H}\alpha}/M_\odot$	$7.44 \pm 0.02$
SMSS $\langle r_{6''}^{\text{ap}} \rangle$	$15.62 \pm 0.05$	$\log M_{\text{H}\beta}/M_\odot$	—
2MASS $K_{\text{ext}}$	$11.54 \pm 0.06$	$\log M_{[\text{O III}]} / M_\odot$	—



## Emission Line Measurements

Line	$\log L$ (erg s <sup>-1</sup> )	FWHM (km s <sup>-1</sup> )	$\sigma$ (km s <sup>-1</sup> )	EW (Å)
H $\gamma$ Narrow	$39.77 \pm 0.37$	$295 \pm 63$	$250 \pm 25$	$0.97 \pm 0.75$
<b>H<math>\gamma</math> Broad</b>	—	—	—	—
[O III] 4364	—	—	—	—
He II Narrow	$40.01 \pm 0.17$	$250 \pm 62$	$105 \pm 25$	$1.81 \pm 0.43$
<b>He II Broad</b>	<b><math>40.93 \pm 0.12</math></b>	<b><math>7087 \pm 63</math></b>	<b><math>3009 \pm 25</math></b>	<b><math>15.40 \pm 2.21</math></b>
H $\beta$ Narrow	$40.90 \pm 0.04$	$295 \pm 63$	$250 \pm 25$	$14.72 \pm 0.73$
<b>H<math>\beta</math> Broad</b>	$< 40.86$	—	—	—
[O III] 5007	$41.57 \pm 0.01$	$295 \pm 63$	$250 \pm 25$	$71.07 \pm 0.81$
He I Narrow	$39.46 \pm 0.31$	$250 \pm 62$	$105 \pm 25$	$0.64 \pm 0.26$
<b>He I Broad</b>	<b><math>40.50 \pm 0.11</math></b>	<b><math>2666 \pm 63</math></b>	<b><math>1132 \pm 25</math></b>	<b><math>6.91 \pm 1.01</math></b>
[O I] 6300	$40.27 \pm 0.05$	$250 \pm 62$	$105 \pm 25$	$4.38 \pm 0.28$
H $\alpha$ Narrow	$41.34 \pm 0.01$	$250 \pm 62$	$105 \pm 25$	$53.75 \pm 0.38$
<b>H<math>\alpha</math> Broad</b>	<b><math>41.74 \pm 0.01</math></b>	<b><math>3509 \pm 74</math></b>	<b><math>1309 \pm 25</math></b>	<b><math>135.33 \pm 1.30</math></b>
[N II] 6585	$41.26 \pm 0.01$	$250 \pm 62$	$105 \pm 25$	$44.64 \pm 0.40$
[S II] 6718	$40.76 \pm 0.02$	$250 \pm 62$	$105 \pm 25$	$14.30 \pm 0.33$
[S II] 6732	$40.65 \pm 0.02$	$250 \pm 62$	$105 \pm 25$	$11.23 \pm 0.33$

## Emission Summary

H $\alpha$ broad SNR	6.00
H $\beta$ broad SNR	0.42
H $\gamma$ broad SNR	0.00
AGN frac	0.37
Host frac	0.63
$\log L_{5100, \text{Host}}$	43.64
Fe II/H $\beta$	—
Fe II/[O III]	0.66

## Quality Flags

spurious_hab/hbb	0/0
15100	1
balmer	2
balmer_snr	2
hb_width	2
balmer_width	2