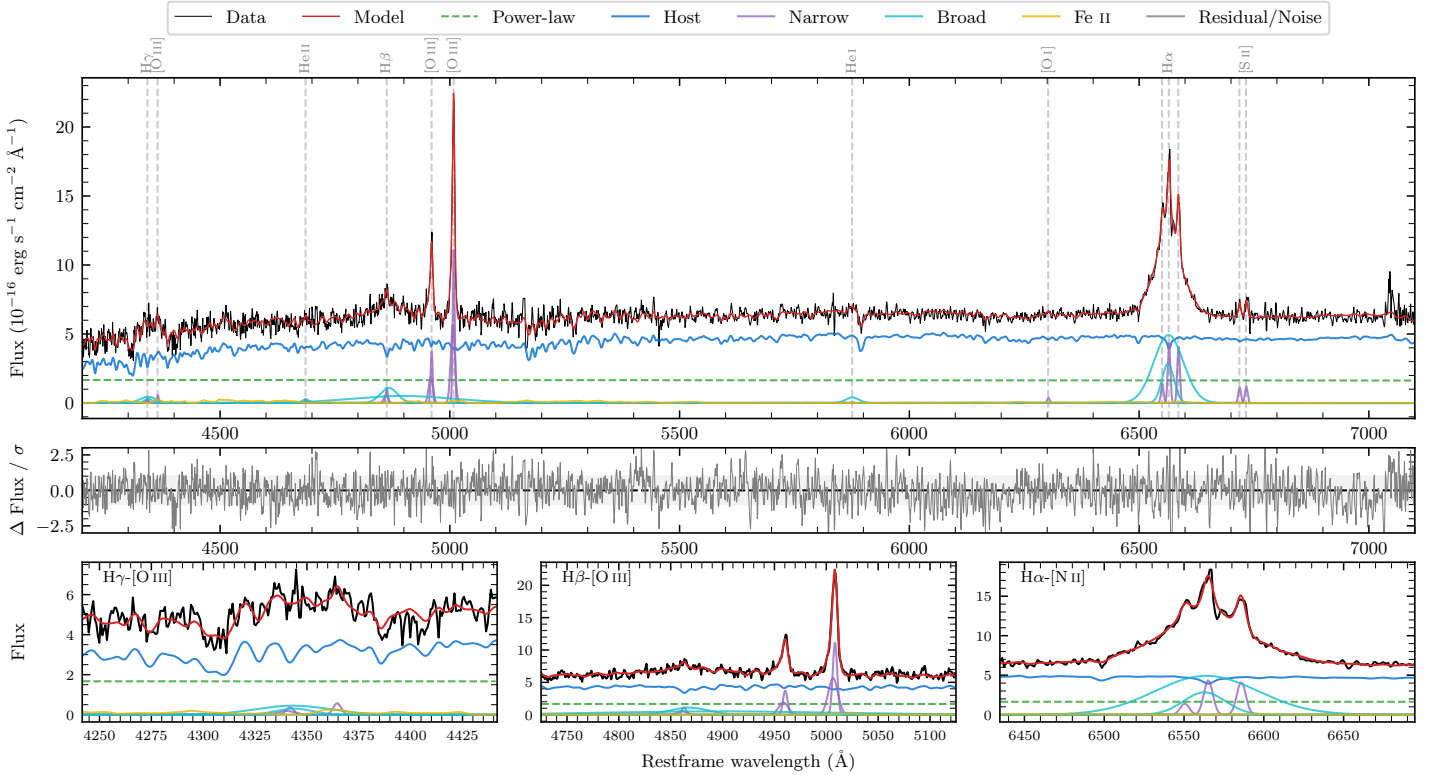
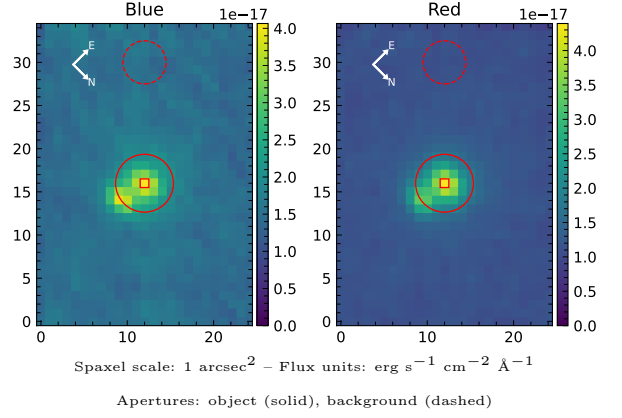


LEDA 1095123

Spectrum ID	7738739_sp1	Spectrum type	Sy 1.5
Alt name	g2258019-021945	Quality flag	good
z	0.0801	AGN reference	6dFGS
RA, Dec	344.5079, -2.3291	MW $E(B - V)$	0.061
MJD	60176.6	Power law α_ν	-1.96 ± 0.04
SNR/ \AA B/R	13.3/23.3	$\log L_{5100, \text{AGN}}$	43.13 ± 0.05
Obs airmass	1.17	$\log H\beta_{\text{Br}}/[\text{O III}]$	0.19 ± 0.03
SMSS ID	7738739	$\log M_{L5100}/M_\odot$	7.65 ± 0.07
Neighbour	5.6", 2012959744	$\log M_{\text{H}\alpha}/M_\odot$	7.23 ± 0.03
SMSS $\langle r_6''_{\text{ap}} \rangle$	16.37 ± 0.07	$\log M_{\text{H}\beta}/M_\odot$	7.74 ± 0.07
2MASS K_{ext}	12.15 ± 0.08	$\log M_{[\text{O III}]} / M_\odot$	7.80 ± 0.06



Emission Line Measurements

Line	$\log L$ (erg s $^{-1}$)	FWHM (km s $^{-1}$)	σ (km s $^{-1}$)	EW (Angstrom)
H γ Narrow	39.79 ± 0.30	380 ± 63	225 ± 26	2.31 ± 0.96
Hγ Broad	40.67 ± 0.11	2101 ± 505	911 ± 95	17.31 ± 2.14
[O III] 4364	39.67 ± 0.26	307 ± 63	128 ± 25	1.76 ± 0.66
He II Narrow	39.41 ± 0.38	307 ± 63	128 ± 25	0.98 ± 0.60
He II Broad	39.98 ± 0.27	1261 ± 69	535 ± 28	3.55 ± 1.22
H β Narrow	40.33 ± 0.09	380 ± 63	225 ± 26	8.01 ± 0.90
Hβ Broad	41.52 ± 0.03	3641 ± 260	4431 ± 118	126.72 ± 4.83
[O III] 5007	41.33 ± 0.01	380 ± 63	225 ± 26	81.75 ± 1.11
He I Narrow	—	—	—	—
He I Broad	40.40 ± 0.08	1722 ± 68	731 ± 27	9.54 ± 1.20
[O I] 6300	39.65 ± 0.16	307 ± 63	128 ± 25	1.72 ± 0.40
H α Narrow	40.72 ± 0.03	307 ± 63	128 ± 25	20.27 ± 0.55
Hα Broad	41.92 ± 0.01	2421 ± 84	1092 ± 25	323.36 ± 1.71
[N II] 6585	40.70 ± 0.02	307 ± 63	128 ± 25	19.24 ± 0.48
[S II] 6718	40.16 ± 0.07	307 ± 63	128 ± 25	5.54 ± 0.61
[S II] 6732	40.17 ± 0.06	307 ± 63	128 ± 25	5.74 ± 0.57

Emission Summary

H α broad SNR	17.36
H β broad SNR	3.58
H γ broad SNR	1.78
AGN frac	0.29
Host frac	0.71
$\log L_{5100, \text{Host}}$	43.52
Fe II/H β	0.21
Fe II/[O III]	0.33

Quality Flags

spurious_hab/hbb	0/0
15100	1
balmer	0
balmer_snr	1
hb_width	2
balmer_width	0