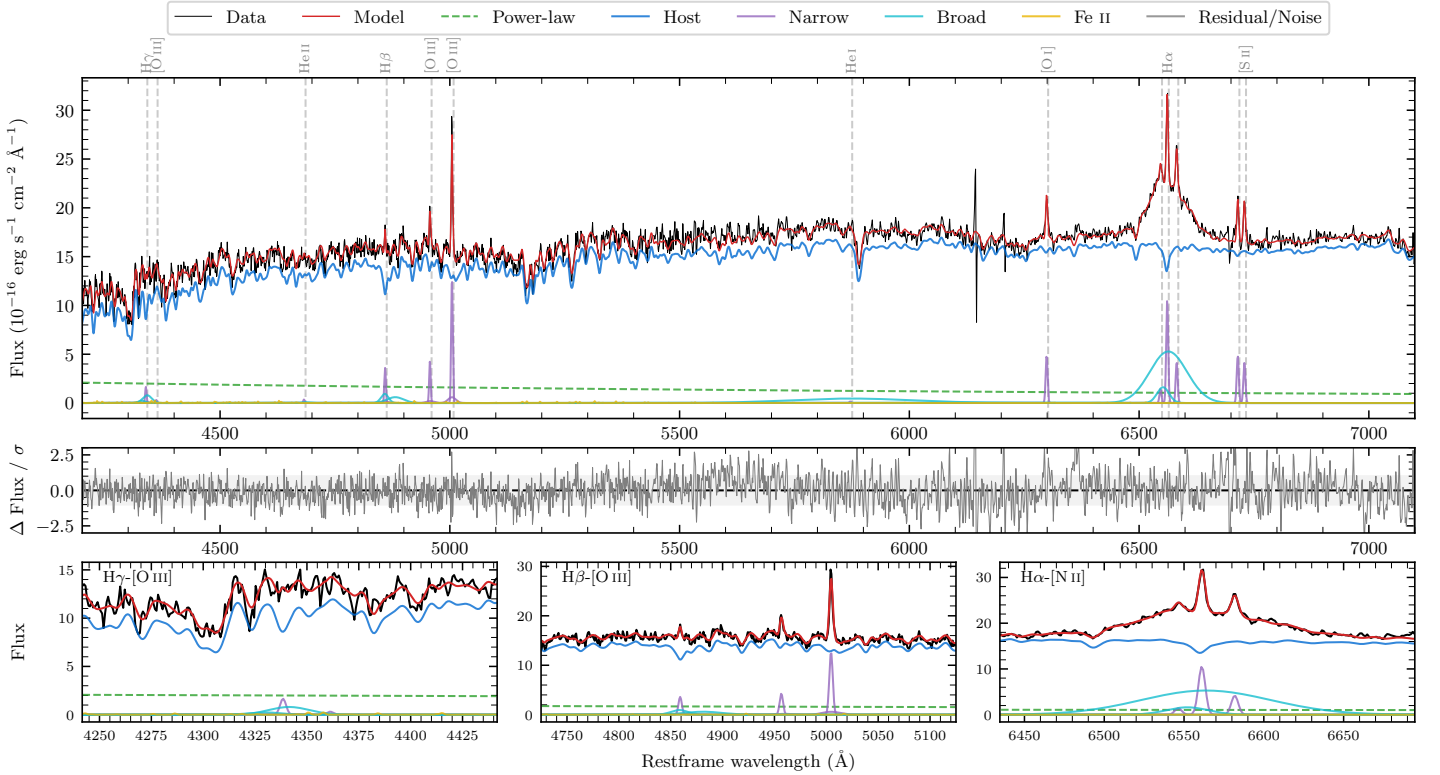
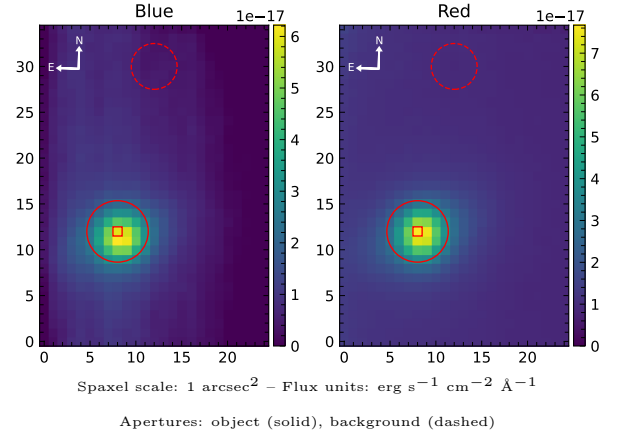


# LEDA 194266

Spectrum ID	7633416_sp1	Spectrum type	Sy 1.5
Alt name	g2253107-040849	Quality flag	good
$z$	0.0245	AGN reference	6dFGS
RA, Dec	343.2948, -4.1469	MW $E(B - V)$	0.038
MJD	59026.68	Power law $\alpha_\nu$	$-0.45 \pm 0.39$
SNR/ $\text{\AA}$ B/R	19.7/41.8	$\log L_{5100, \text{AGN}}$	$42.06 \pm 0.07$
Obs airmass	1.35	$\log H\beta_{\text{Br}}/[\text{O III}]$	$-0.15 \pm 0.09$
SMSS ID	7633416	$\log M_{L5100}/M_\odot$	$6.70 \pm 0.34$
Neighbour	None $< 15''$	$\log M_{\text{H}\alpha}/M_\odot$	$6.98 \pm 0.05$
SMSS $\langle r_6 \rangle_{\text{ap}}$	$15.68 \pm 0.02$	$\log M_{\text{H}\beta}/M_\odot$	$6.49 \pm 0.34$
2MASS $K_{\text{ext}}$	$11.99 \pm 0.07$	$\log M_{[\text{O III}]} / M_\odot$	$6.65 \pm 0.34$



## Emission Line Measurements

Line	$\log L$ ( $\text{erg s}^{-1}$ )	FWHM ( $\text{km s}^{-1}$ )	$\sigma$ ( $\text{km s}^{-1}$ )	EW ( $\text{\AA}$ )
H $\gamma$ Narrow	$39.04 \pm 0.23$	$247 \pm 63$	$237 \pm 49$	$3.81 \pm 2.04$
<b>H<math>\gamma</math> Broad</b>	<b><math>39.59 \pm 0.16</math></b>	<b><math>1706 \pm 139</math></b>	<b><math>642 \pm 34</math></b>	<b><math>12.47 \pm 2.52</math></b>
[O III] 4364	—	—	—	—
He II Narrow	$38.33 \pm 0.46$	$238 \pm 63$	$100 \pm 25$	$0.82 \pm 0.79$
<b>He II Broad</b>	—	—	—	—
H $\beta$ Narrow	$39.43 \pm 0.09$	$247 \pm 63$	$237 \pm 49$	$11.05 \pm 1.81$
<b>H<math>\beta</math> Broad</b>	<b><math>39.84 \pm 0.08</math></b>	<b><math>2062 \pm 713</math></b>	<b><math>895 \pm 32</math></b>	<b><math>28.64 \pm 2.80</math></b>
[O III] 5007	$39.99 \pm 0.03$	$247 \pm 63$	$237 \pm 49$	$42.15 \pm 1.92$
He I Narrow	—	—	—	—
<b>He I Broad</b>	<b><math>40.37 \pm 0.05</math></b>	<b><math>16268 \pm 64</math></b>	<b><math>6909 \pm 26</math></b>	<b><math>128.84 \pm 7.90</math></b>
[O I] 6300	$39.58 \pm 0.03$	$238 \pm 63$	$100 \pm 25$	$23.33 \pm 0.86$
H $\alpha$ Narrow	$39.93 \pm 0.01$	$238 \pm 63$	$100 \pm 25$	$56.45 \pm 0.95$
<b>H<math>\alpha</math> Broad</b>	<b><math>40.95 \pm 0.01</math></b>	<b><math>3601 \pm 116</math></b>	<b><math>1523 \pm 25</math></b>	<b><math>579.37 \pm 4.13</math></b>
[N II] 6585	$39.53 \pm 0.03$	$238 \pm 63$	$100 \pm 25$	$22.52 \pm 0.92$
[S II] 6718	$39.60 \pm 0.03$	$238 \pm 63$	$100 \pm 25$	$27.40 \pm 1.07$
[S II] 6732	$39.54 \pm 0.03$	$238 \pm 63$	$100 \pm 25$	$23.53 \pm 1.04$

## Emission Summary

H $\alpha$ broad SNR	8.75
H $\beta$ broad SNR	1.59
H $\gamma$ broad SNR	1.29
AGN frac	0.10
Host frac	0.90
$\log L_{5100, \text{Host}}$	43.00
Fe II/H $\beta$	—
Fe II/[O III]	—

## Quality Flags

spurious_hab/hbb	0/0
15100	2
balmer	1
balmer_snr	2
hb_width	0
balmer_width	2