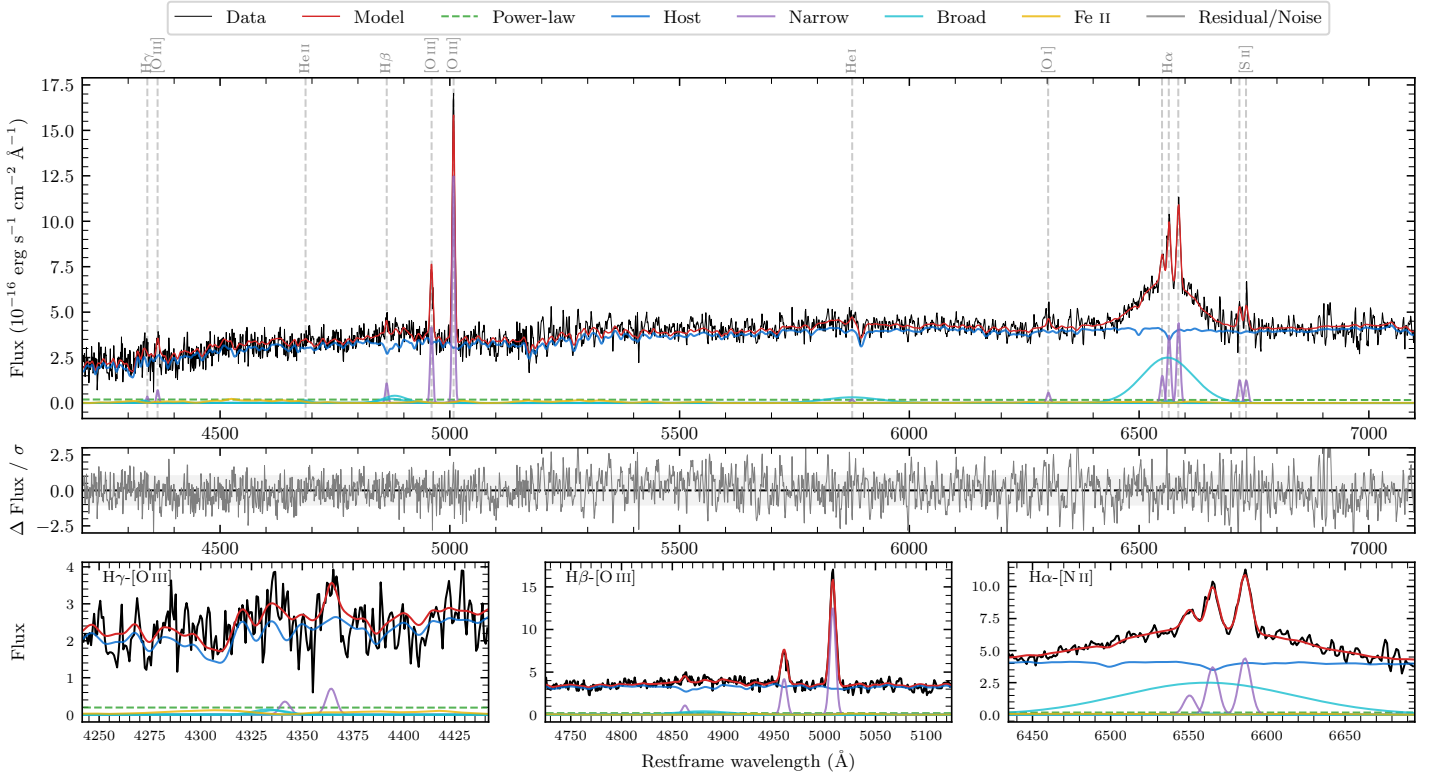
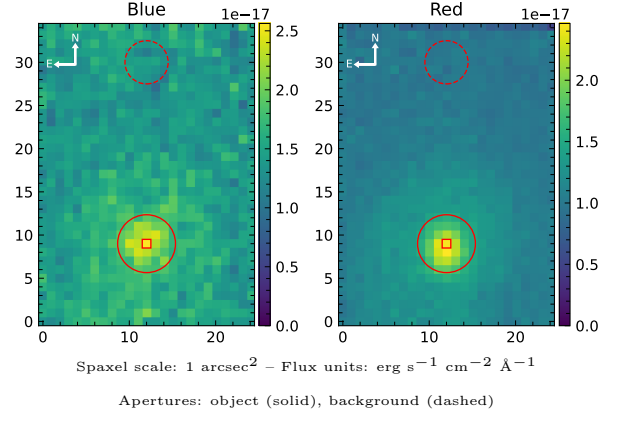


6dFGS gJ225731.2–061443

Spectrum ID	7608050_sp1	Spectrum type	Sy 1.5
Alt name	g2257312–061443	Quality flag	good
z	0.0901	AGN reference	6dFGS
RA, Dec	344.3800, –6.2451	MW $E(B - V)$	0.040
MJD	60914.57	Power law α_ν	-1.68 ± 0.27
SNR/Å B/R	7.3/12.6	$\log L_{5100, \text{AGN}}$	42.29 ± 0.31
Obs airmass	1.13	$\log H\beta_{\text{Br}}/[\text{O III}]$	-0.34 ± 0.07
SMSS ID	7608050	$\log M_{L5100}/M_\odot$	7.32 ± 0.14
Neighbour	14.2", 7608048	$\log M_{\text{H}\alpha}/M_\odot$	7.96 ± 0.02
SMSS $\langle r_6^{\text{ap}} \rangle$	17.08 ± 0.10	$\log M_{\text{H}\beta}/M_\odot$	7.52 ± 0.05
2MASS K_{ext}	12.70 ± 0.15	$\log M_{[\text{O III}]} / M_\odot$	7.82 ± 0.02



Emission Line Measurements

Line	$\log L$ (erg s ⁻¹)	FWHM (km s ⁻¹)	σ (km s ⁻¹)	EW (Å)
H γ Narrow	39.71 ± 0.38	409 ± 63	193 ± 32	12.96 ± 12.79
Hγ Broad	—	—	—	—
[O III] 4364	39.99 ± 0.21	408 ± 63	172 ± 25	25.29 ± 7.26
He II Narrow	—	—	—	—
He II Broad	39.93 ± 0.38	1508 ± 63	640 ± 25	22.33 ± 12.64
H β Narrow	40.24 ± 0.12	409 ± 63	194 ± 32	46.00 ± 11.01
Hβ Broad	40.98 ± 0.07	3760 ± 58	1334 ± 27	241.68 ± 21.05
[O III] 5007	41.32 ± 0.01	409 ± 63	194 ± 32	549.42 ± 12.91
He I Narrow	39.62 ± 0.35	408 ± 63	172 ± 25	11.70 ± 5.56
He I Broad	41.02 ± 0.07	7156 ± 63	3039 ± 25	294.39 ± 24.96
[O I] 6300	40.06 ± 0.18	408 ± 63	172 ± 25	33.11 ± 6.91
H α Narrow	40.89 ± 0.03	408 ± 63	172 ± 25	226.68 ± 6.78
Hα Broad	41.89 ± 0.01	5767 ± 157	2194 ± 25	2245.20 ± 28.19
[N II] 6585	40.97 ± 0.02	408 ± 63	172 ± 25	270.63 ± 7.20
[S II] 6718	40.43 ± 0.06	408 ± 63	172 ± 25	78.99 ± 8.24
[S II] 6732	40.42 ± 0.07	408 ± 63	172 ± 25	78.20 ± 7.98

Emission Summary

H α broad SNR	5.40
H β broad SNR	1.36
H γ broad SNR	0.73
AGN frac	0.05
Host frac	0.95
$\log L_{5100, \text{Host}}$	43.53
Fe II/H β	0.88
Fe II/[O III]	0.39

Quality Flags

spurious_hab/hbb	0/0
15100	2
balmer	1
balmer_snr	2
hb_width	0
balmer_width	2