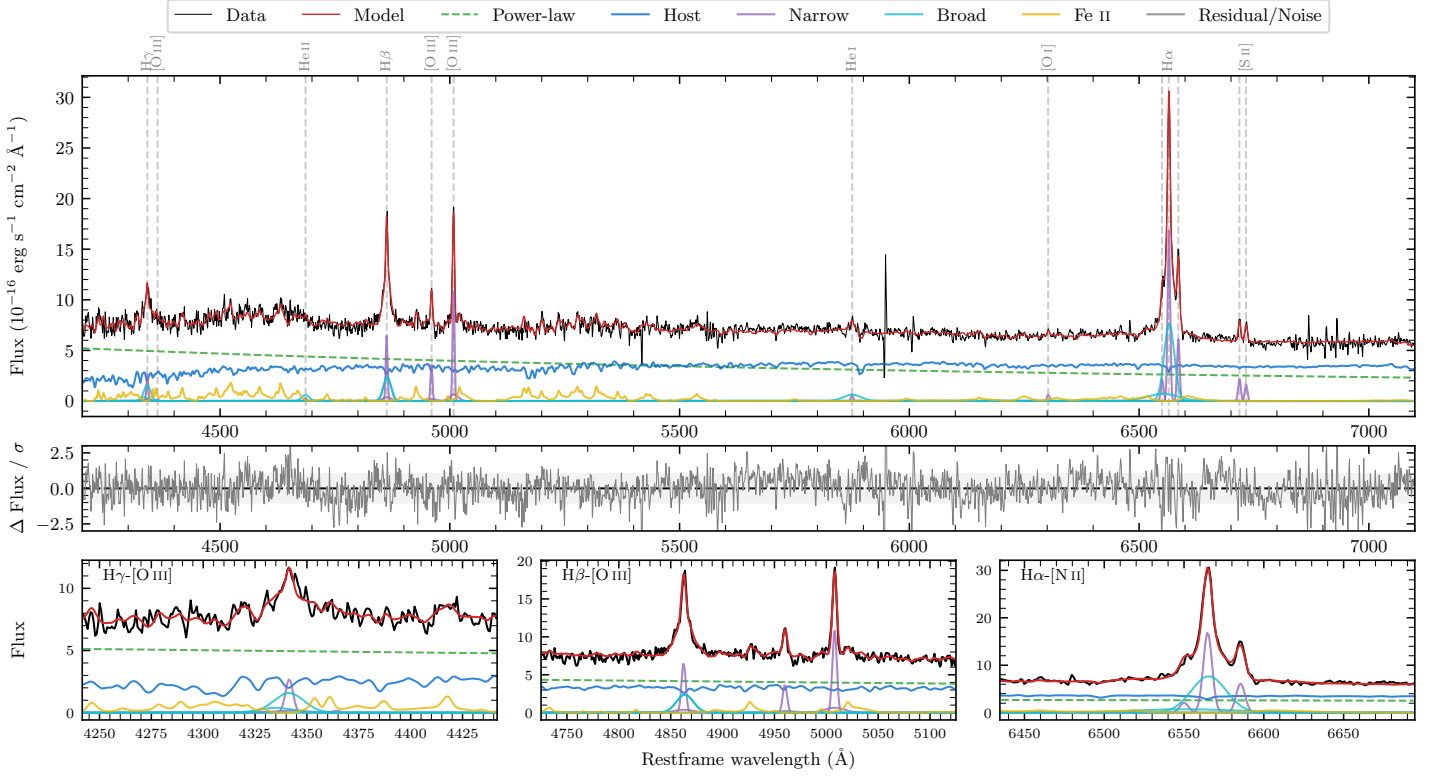
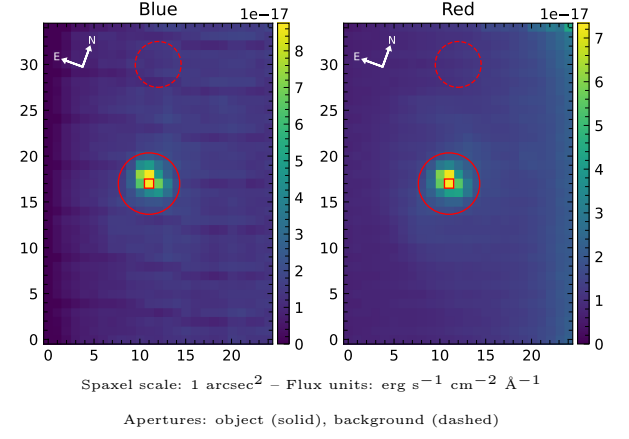


# Z 5–37

Spectrum ID	76067578_sp2	Spectrum type	Sy 1.5
Alt name	g0856178–013807	Quality flag	good
$z$	0.0595	AGN reference	6dFGS
RA, Dec	134.0743, $-1.6354$	MW $E(B - V)$	0.019
MJD	60383.47	Power law $\alpha_\nu$	$-0.45 \pm 0.10$
SNR/ $\text{\AA}$ B/R	14.5/17.8	$\log L_{5100, \text{AGN}}$	$43.22 \pm 0.02$
Obs airmass	1.15	$\log H\beta_{\text{Br}}/[\text{O III}]$	$0.14 \pm 0.04$
SMSS ID	76067578	$\log M_{L5100}/M_\odot$	$6.72 \pm 0.03$
Neighbour	None $< 15''$	$\log M_{\text{H}\alpha}/M_\odot$	$6.32 \pm 0.05$
SMSS $\langle r_6''_{\text{ap}} \rangle$	$16.43 \pm 0.07$	$\log M_{\text{H}\beta}/M_\odot$	$6.50 \pm 0.05$
2MASS $K_{\text{ext}}$	$12.62 \pm 0.11$	$\log M_{[\text{O III}]} / M_\odot$	$6.57 \pm 0.04$



## Emission Line Measurements

Line	$\log L$ ( $\text{erg s}^{-1}$ )	FWHM ( $\text{km s}^{-1}$ )	$\sigma$ ( $\text{km s}^{-1}$ )	EW ( $\text{\AA}$ )
H $\gamma$ Narrow	$40.14 \pm 0.10$	$311 \pm 63$	$266 \pm 50$	$3.33 \pm 0.54$
<b>H<math>\gamma</math> Broad</b>	<b><math>40.54 \pm 0.07</math></b>	<b><math>1266 \pm 92</math></b>	<b><math>471 \pm 34</math></b>	<b><math>7.87 \pm 0.57</math></b>
[O III] 4364	—	—	—	—
He II Narrow	$39.17 \pm 0.38$	$301 \pm 63$	$126 \pm 25$	$0.40 \pm 0.25$
<b>He II Broad</b>	<b><math>40.07 \pm 0.14</math></b>	<b><math>1270 \pm 92</math></b>	<b><math>539 \pm 38</math></b>	<b><math>3.00 \pm 0.56</math></b>
H $\beta$ Narrow	$40.57 \pm 0.05$	$311 \pm 63$	$266 \pm 50$	$10.82 \pm 0.61$
<b>H<math>\beta</math> Broad</b>	<b><math>40.95 \pm 0.03</math></b>	<b><math>1185 \pm 26</math></b>	<b><math>419 \pm 25</math></b>	<b><math>24.76 \pm 0.60</math></b>
[O III] 5007	$40.81 \pm 0.02$	$311 \pm 63$	$266 \pm 50$	$19.43 \pm 0.62$
He I Narrow	$39.50 \pm 0.18$	$301 \pm 63$	$126 \pm 25$	$1.21 \pm 0.29$
<b>He I Broad</b>	<b><math>40.46 \pm 0.07</math></b>	<b><math>2341 \pm 98</math></b>	<b><math>994 \pm 41</math></b>	<b><math>10.54 \pm 0.92</math></b>
[O I] 6300	$39.57 \pm 0.13$	$301 \pm 63$	$126 \pm 25$	$1.57 \pm 0.30$
H $\alpha$ Narrow	$41.02 \pm 0.01$	$301 \pm 63$	$126 \pm 25$	$47.58 \pm 0.45$
<b>H<math>\alpha</math> Broad</b>	<b><math>41.39 \pm 0.01</math></b>	<b><math>1246 \pm 64</math></b>	<b><math>553 \pm 36</math></b>	<b><math>110.59 \pm 1.32</math></b>
[N II] 6585	$40.59 \pm 0.02$	$301 \pm 63$	$126 \pm 25$	$17.46 \pm 0.44$
[S II] 6718	$40.14 \pm 0.04$	$301 \pm 63$	$126 \pm 25$	$6.48 \pm 0.36$
[S II] 6732	$40.02 \pm 0.05$	$301 \pm 63$	$126 \pm 25$	$4.88 \pm 0.37$

## Emission Summary

H $\alpha$ broad SNR	15.41
H $\beta$ broad SNR	8.78
H $\gamma$ broad SNR	3.57
AGN frac	0.56
Host frac	0.44
$\log L_{5100, \text{Host}}$	43.12
Fe II/H $\beta$	2.18
Fe II/[O III]	2.91

## Quality Flags

spurious_hab/hbb	0/0
15100	0
balmer	0
balmer_snr	0
hb_width	0
balmer_width	1