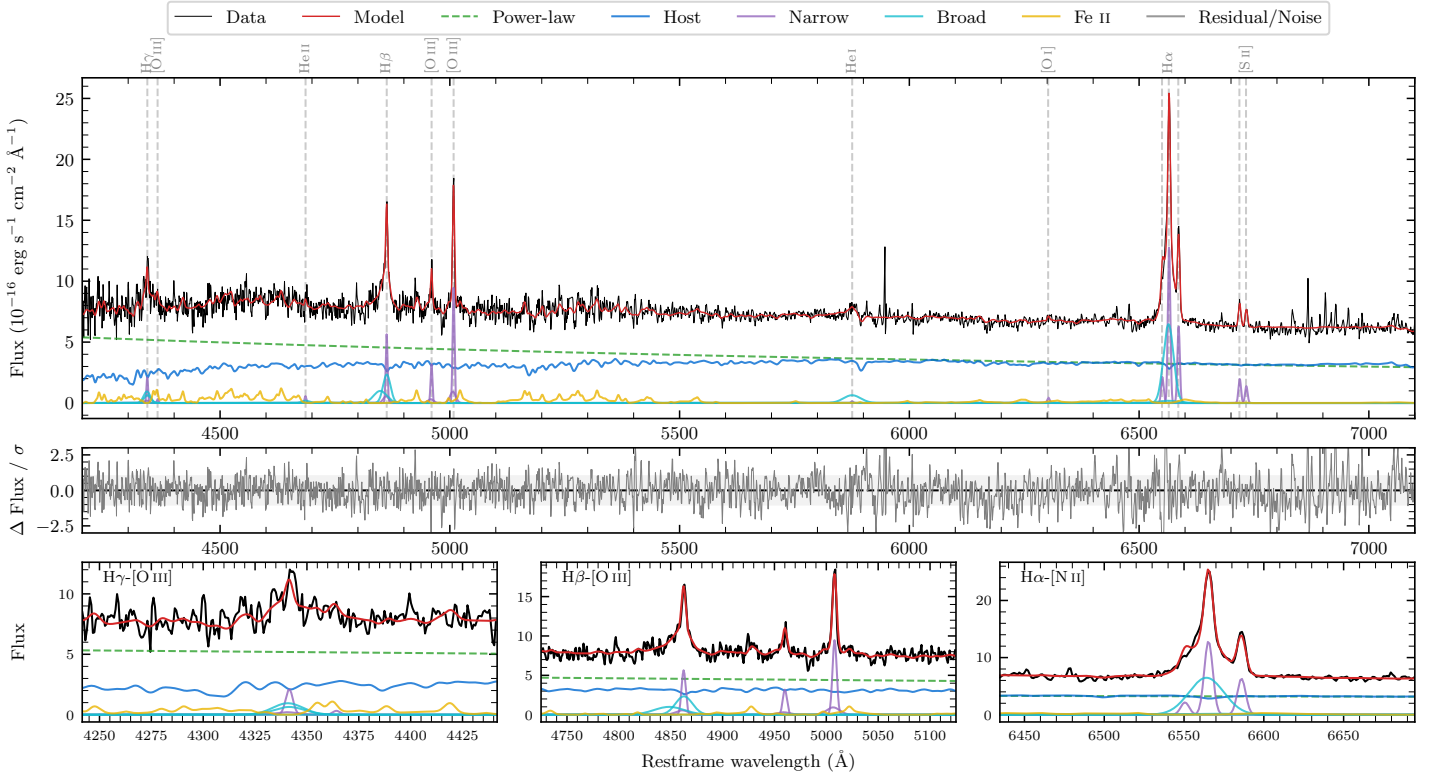
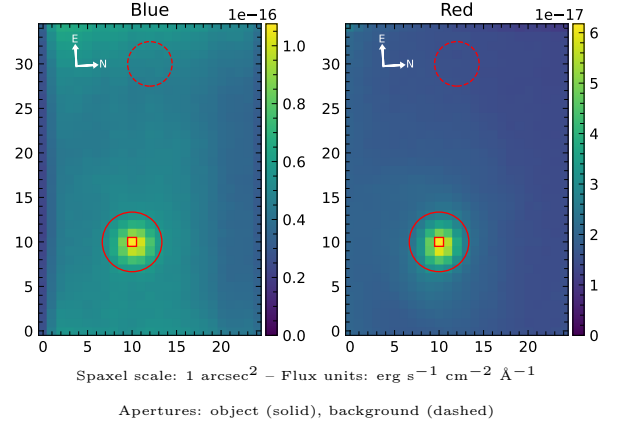


# Z 5–37

Spectrum ID	76067578_sp1	Spectrum type	Sy 1.5
Alt name	g0856178–013807	Quality flag	good
$z$	0.0595	AGN reference	6dFGS
RA, Dec	134.0743, $-1.6354$	MW $E(B - V)$	0.019
MJD	59015.37	Power law $\alpha_\nu$	$-0.85 \pm 0.07$
SNR/ $\text{\AA}$ B/R	11.0/21.6	$\log L_{5100, \text{AGN}}$	$43.27 \pm 0.02$
Obs airmass	1.79	$\log H\beta_{\text{Br}}/[\text{O III}]$	$0.12 \pm 0.05$
SMSS ID	76067578	$\log M_{L5100}/M_\odot$	$6.92 \pm 0.08$
Neighbour	None $< 15''$	$\log M_{H\alpha}/M_\odot$	$6.19 \pm 0.06$
SMSS $\langle r_6''_{\text{ap}} \rangle$	$16.43 \pm 0.07$	$\log M_{H\beta}/M_\odot$	$6.65 \pm 0.10$
2MASS $K_{\text{ext}}$	$12.62 \pm 0.11$	$\log M_{[\text{O III}]} / M_\odot$	$6.72 \pm 0.09$



## Emission Line Measurements

Line	$\log L$ (erg s <sup>-1</sup> )	FWHM (km s <sup>-1</sup> )	$\sigma$ (km s <sup>-1</sup> )	EW (Å)
H $\gamma$ Narrow	$40.04 \pm 0.17$	$304 \pm 63$	$214 \pm 36$	$2.48 \pm 0.62$
<b>H<math>\gamma</math> Broad</b>	<b><math>40.46 \pm 0.12</math></b>	<b><math>1184 \pm 63</math></b>	<b><math>440 \pm 25</math></b>	<b><math>5.93 \pm 0.75</math></b>
[O III] 4364	–	–	–	–
He II Narrow	$39.38 \pm 0.35$	$289 \pm 63$	$121 \pm 25$	$0.60 \pm 0.33$
<b>He II Broad</b>	<b><math>39.56 \pm 0.42</math></b>	<b><math>1206 \pm 65</math></b>	<b><math>512 \pm 26</math></b>	<b><math>0.88 \pm 0.67</math></b>
H $\beta$ Narrow	$40.51 \pm 0.06$	$304 \pm 63$	$214 \pm 36$	$8.43 \pm 0.58$
<b>H<math>\beta</math> Broad</b>	<b><math>40.88 \pm 0.05</math></b>	<b><math>1455 \pm 135</math></b>	<b><math>608 \pm 37</math></b>	<b><math>19.40 \pm 0.92</math></b>
[O III] 5007	$40.75 \pm 0.03$	$304 \pm 63$	$214 \pm 36$	$15.09 \pm 0.60$
He I Narrow	$38.88 \pm 0.45$	$289 \pm 63$	$121 \pm 25$	$0.24 \pm 0.20$
<b>He I Broad</b>	<b><math>40.44 \pm 0.05</math></b>	<b><math>2247 \pm 66</math></b>	<b><math>954 \pm 26</math></b>	<b><math>8.72 \pm 0.65</math></b>
[O I] 6300	$39.40 \pm 0.17$	$289 \pm 63$	$121 \pm 25$	$0.88 \pm 0.21$
H $\alpha$ Narrow	$40.89 \pm 0.01$	$289 \pm 63$	$121 \pm 25$	$28.25 \pm 0.28$
<b>H<math>\alpha</math> Broad</b>	<b><math>41.23 \pm 0.01</math></b>	<b><math>1197 \pm 64</math></b>	<b><math>445 \pm 34</math></b>	<b><math>62.02 \pm 0.74</math></b>
[N II] 6585	$40.58 \pm 0.02$	$289 \pm 63$	$121 \pm 25$	$13.95 \pm 0.27$
[S II] 6718	$40.09 \pm 0.04$	$289 \pm 63$	$121 \pm 25$	$4.61 \pm 0.24$
[S II] 6732	$39.93 \pm 0.06$	$289 \pm 63$	$121 \pm 25$	$3.20 \pm 0.24$

## Emission Summary

H $\alpha$ broad SNR	10.12
H $\beta$ broad SNR	4.54
H $\gamma$ broad SNR	2.64
AGN frac	0.59
Host frac	0.41
$\log L_{5100, \text{Host}}$	43.12
Fe II/H $\beta$	1.86
Fe II/[O III]	2.48

## Quality Flags

spurious_hab/hbb	0/0
15100	0
balmer	0
balmer_snr	1
hb_width	0
balmer_width	0