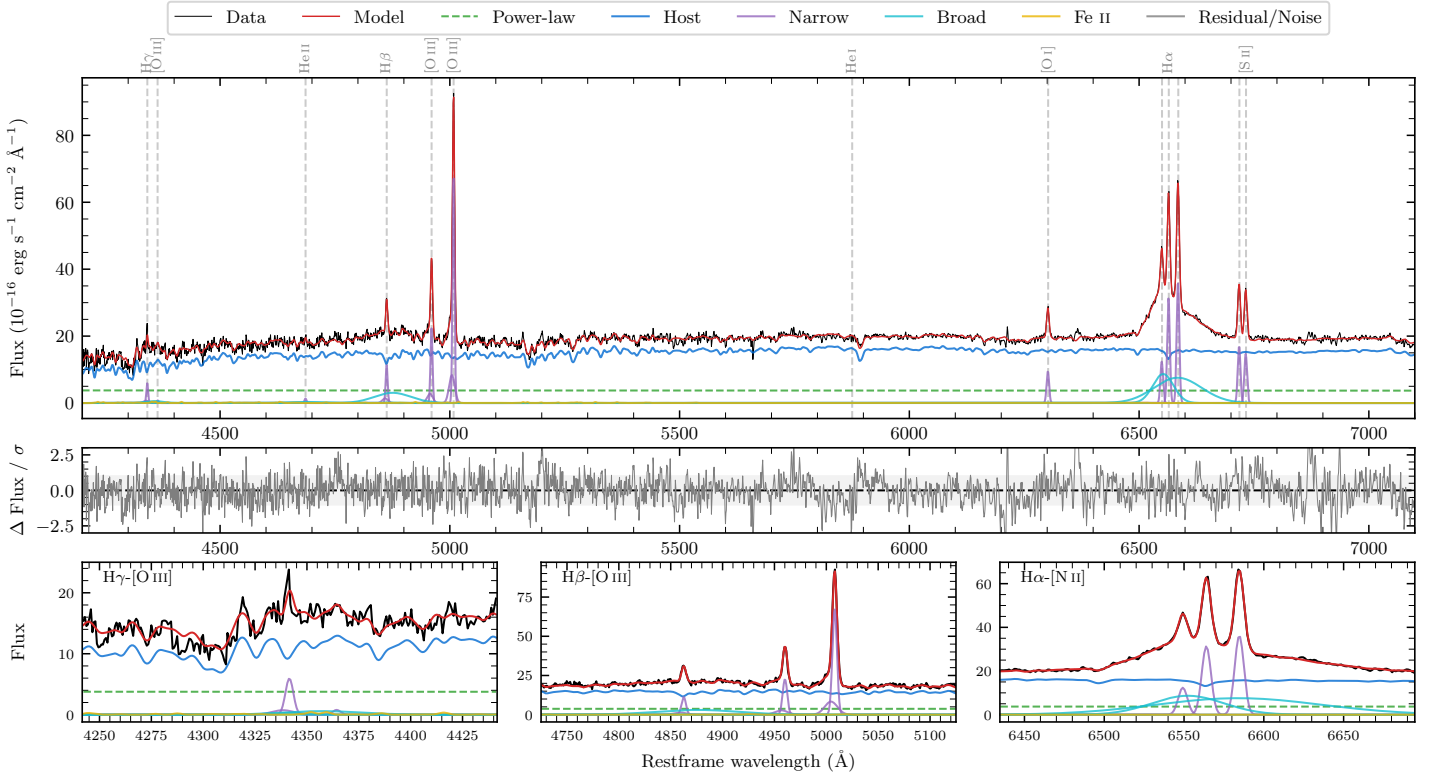
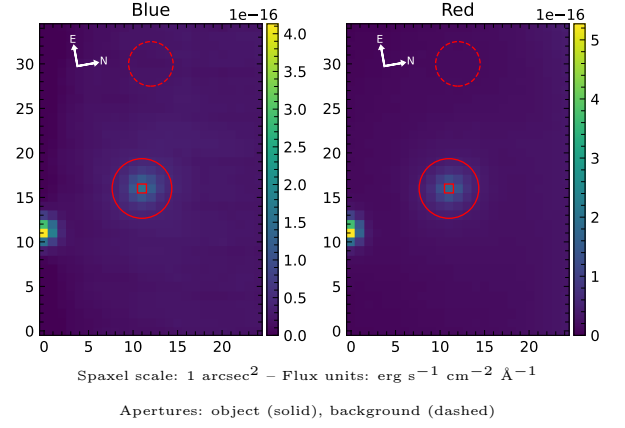


NGC 2617

Spectrum ID	75780515_sp1	Spectrum type	Sy 1.5
Alt name	g0835388-040518	Quality flag	good
z	0.0142	AGN reference	6dFGS
RA, Dec	128.9117, -4.0883	MW $E(B-V)$	0.029
MJD	60344.59	Power law α_ν	-1.97 ± 0.03
SNR/ \AA B/R	19.0/32.1	$\log L_{5100, \text{AGN}}$	41.94 ± 0.05
Obs airmass	1.13	$\log H\beta_{\text{Br}}/[\text{O III}]$	-0.20 ± 0.02
SMSS ID	75780515	$\log M_{L5100}/M_\odot$	7.52 ± 0.05
Neighbour	12.5", 75780514	$\log M_{\text{H}\alpha}/M_\odot$	6.93 ± 0.05
SMSS $\langle r_6''_{\text{ap}} \rangle$	14.49 ± 0.11	$\log M_{\text{H}\beta}/M_\odot$	7.50 ± 0.07
2MASS K_{ext}	10.05 ± 0.04	$\log M_{[\text{O III}]} / M_\odot$	7.70 ± 0.06



Emission Line Measurements

Line	$\log L$ (erg s ⁻¹)	FWHM (km s ⁻¹)	σ (km s ⁻¹)	EW (Å)
H γ Narrow	39.25 ± 0.07	335 ± 62	236 ± 26	10.30 ± 1.15
Hγ Broad	—	—	—	—
[O III] 4364	38.24 ± 0.39	316 ± 62	132 ± 25	1.02 ± 0.67
He II Narrow	38.52 ± 0.22	316 ± 62	132 ± 25	1.91 ± 0.55
He II Broad	39.11 ± 0.23	5036 ± 68	2139 ± 28	7.59 ± 2.16
H β Narrow	39.58 ± 0.03	335 ± 62	236 ± 26	22.11 ± 0.91
Hβ Broad	40.16 ± 0.02	5620 ± 140	2091 ± 29	84.15 ± 2.38
[O III] 5007	40.37 ± 0.01	335 ± 62	236 ± 26	135.62 ± 0.93
He I Narrow	—	—	—	—
He I Broad	—	—	—	—
[O I] 6300	39.48 ± 0.02	316 ± 62	132 ± 25	17.95 ± 0.43
H α Narrow	40.02 ± 0.01	316 ± 62	132 ± 25	61.95 ± 0.49
Hα Broad	40.83 ± 0.01	3717 ± 92	1716 ± 25	401.36 ± 1.91
[N II] 6585	40.09 ± 0.01	316 ± 62	132 ± 25	71.88 ± 0.49
[S II] 6718	39.77 ± 0.01	316 ± 62	132 ± 25	34.42 ± 0.45
[S II] 6732	39.70 ± 0.01	316 ± 62	132 ± 25	29.83 ± 0.47

Emission Summary

H α broad SNR	14.95
H β broad SNR	3.20
H γ broad SNR	0.87
AGN frac	0.21
Host frac	0.79
$\log L_{5100, \text{Host}}$	42.51
Fe II/H β	0.09
Fe II/[O III]	0.06

Quality Flags

spurious_hab/hbb	0/0
15100	1
balmer	0
balmer_snr	2
hb_width	0
balmer_width	0