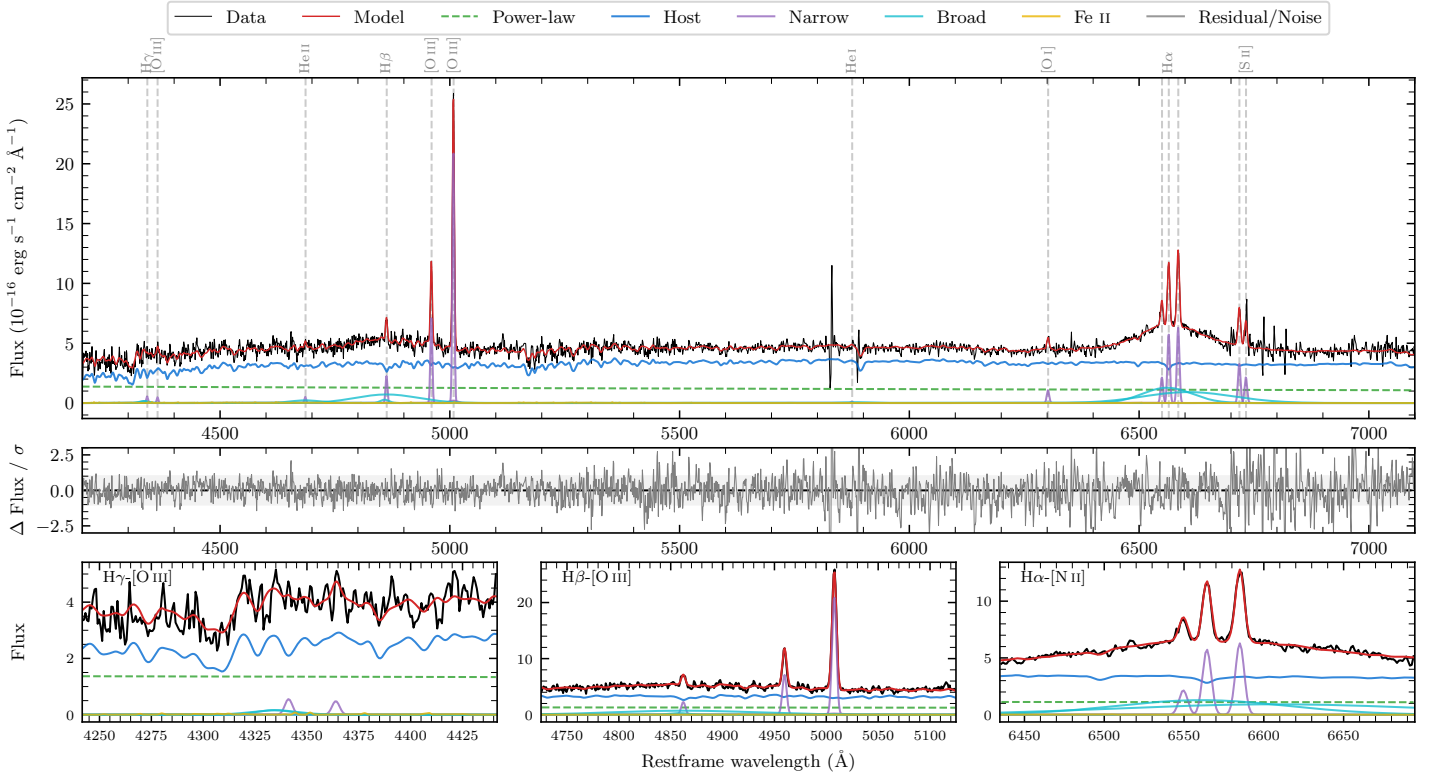
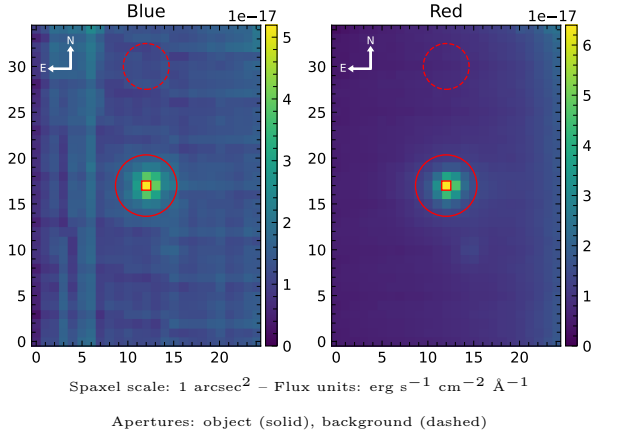


LEDA 1049213

Spectrum ID	75719808_sp1	Spectrum type	Sy 1.5
Alt name	g0828082-050633	Quality flag	good
z	0.0807	AGN reference	6dFGS
RA, Dec	127.0342, -5.1092	MW $E(B - V)$	0.029
MJD	60019.44	Power law α_ν	-1.52 ± 0.23
SNR/ \AA B/R	8.0/18.0	$\log L_{5100, \text{AGN}}$	43.01 ± 0.07
Obs airmass	1.12	$\log H\beta_{\text{Br}}/[\text{O III}]$	0.05 ± 0.04
SMSS ID	75719808	$\log M_{L5100}/M_\odot$	8.18 ± 0.23
Neighbour	None $< 15''$	$\log M_{\text{H}\alpha}/M_\odot$	8.15 ± 0.02
SMSS $\langle r_6 \rangle_{\text{ap}}$	17.14 ± 0.02	$\log M_{\text{H}\beta}/M_\odot$	8.25 ± 0.23
2MASS K_{ext}	13.33 ± 0.17	$\log M_{[\text{O III}]} / M_\odot$	8.37 ± 0.23



Emission Line Measurements

Line	$\log L$ (erg s ⁻¹)	FWHM (km s ⁻¹)	σ (km s ⁻¹)	EW (Å)
H γ Narrow	39.66 ± 0.38	300 ± 63	160 ± 37	2.10 ± 2.02
Hγ Broad	—	—	—	—
[O III] 4364	39.58 ± 0.36	294 ± 63	125 ± 25	1.76 ± 1.11
He II Narrow	39.63 ± 0.33	294 ± 63	125 ± 25	2.05 ± 0.99
He II Broad	40.49 ± 0.21	4796 ± 65	2037 ± 26	14.87 ± 4.08
H β Narrow	40.32 ± 0.10	300 ± 63	161 ± 37	10.14 ± 1.90
Hβ Broad	41.35 ± 0.04	7124 ± 1992	3488 ± 73	108.27 ± 6.30
[O III] 5007	41.30 ± 0.01	300 ± 63	162 ± 37	98.55 ± 2.21
He I Narrow	39.06 ± 0.46	294 ± 63	125 ± 25	0.61 ± 0.51
He I Broad	39.94 ± 0.30	3165 ± 67	1344 ± 27	4.58 ± 1.95
[O I] 6300	40.09 ± 0.06	294 ± 63	125 ± 25	6.74 ± 0.54
H α Narrow	40.84 ± 0.01	294 ± 63	125 ± 25	38.34 ± 0.63
Hα Broad	41.84 ± 0.01	7444 ± 192	3096 ± 48	386.88 ± 4.72
[N II] 6585	40.88 ± 0.01	294 ± 63	125 ± 25	42.16 ± 0.63
[S II] 6718	40.60 ± 0.02	294 ± 63	125 ± 25	22.64 ± 0.81
[S II] 6732	40.42 ± 0.05	294 ± 63	125 ± 25	14.90 ± 0.93

Emission Summary

H α broad SNR	4.01
H β broad SNR	1.90
H γ broad SNR	0.76
AGN frac	0.29
Host frac	0.71
$\log L_{5100, \text{Host}}$	43.40
Fe II/H β	—
Fe II/[O III]	—

Quality Flags

spurious_hab/hbb	0/0
15100	1
balmer	1
balmer_snr	2
hb_width	0
balmer_width	1