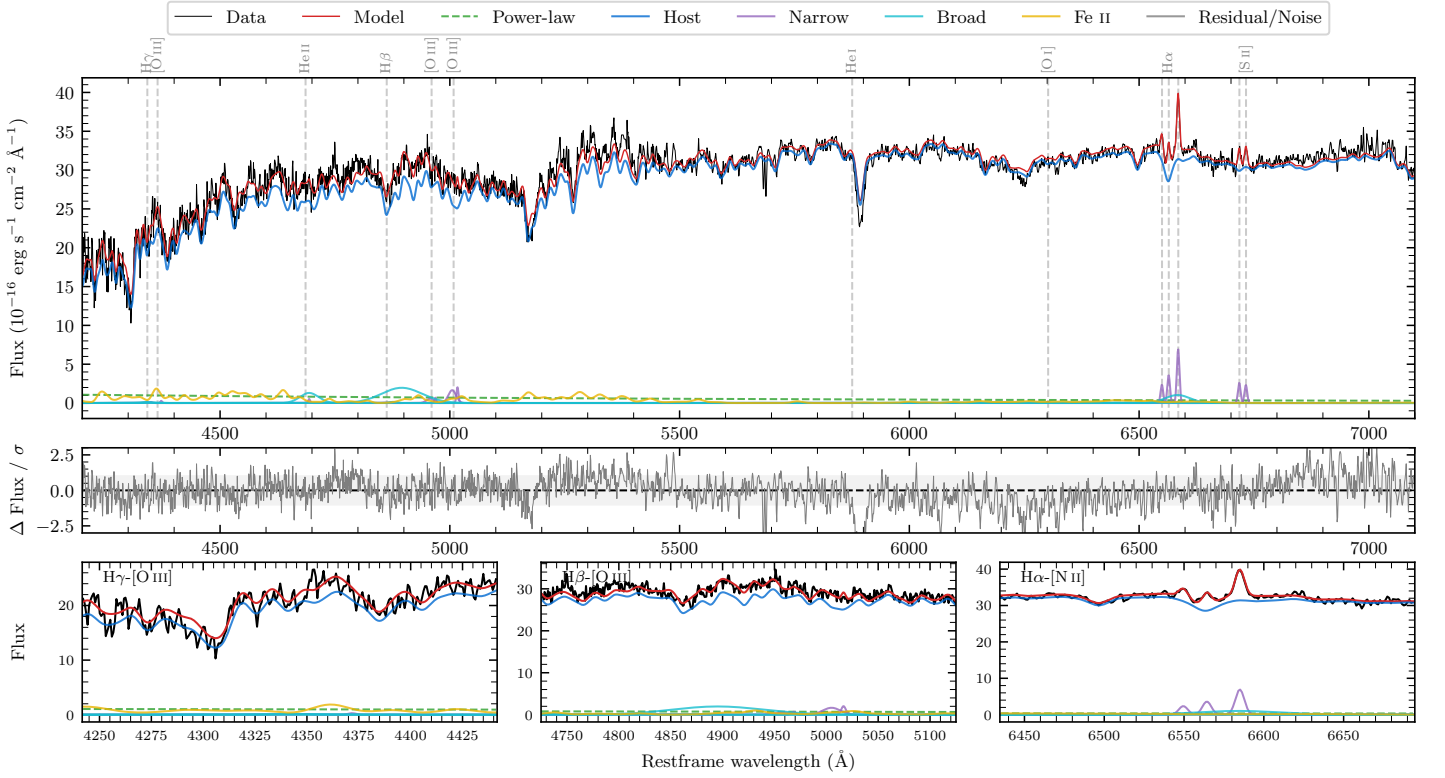
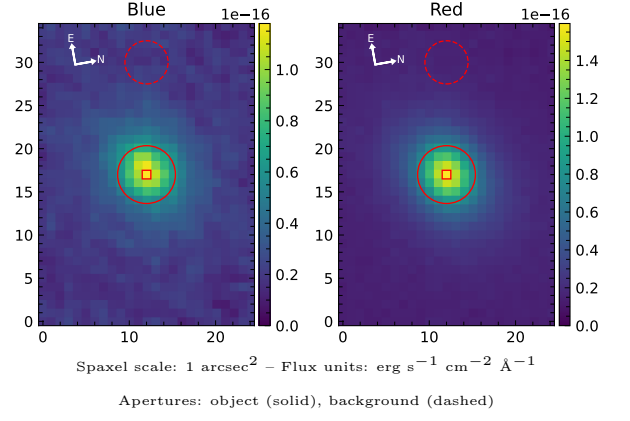


MCG-01-22-028

Spectrum ID	75454716_sp1	Spectrum type	SF
Alt name	MCG -1-22-028	Quality flag	good
z	0.0363	AGN reference	PGC
RA, Dec	129.0388, -7.0549	MW $E(B-V)$	0.030
MJD	61009.7	Power law α_ν	0.49 ± 0.01
SNR/ \AA B/R	20.6/42.4	$\log L_{5100, \text{AGN}}$	42.03 ± 0.21
Obs airmass	1.16	$\log H\beta_{\text{Br}}/[\text{O III}]$	—
SMSS ID	75454716	$\log M_{L5100}/M_\odot$	—
Neighbour	8.2", 2113993222	$\log M_{\text{H}\alpha}/M_\odot$	—
SMSS $\langle r_6^{\text{ap}} \rangle$	14.75 ± 0.03	$\log M_{\text{H}\beta}/M_\odot$	—
2MASS K_{ext}	10.19 ± 0.04	$\log M_{[\text{O III}]} / M_\odot$	—



Emission Line Measurements

Line	$\log L$ (erg s $^{-1}$)	FWHM (km s $^{-1}$)	σ (km s $^{-1}$)	EW (A)
H γ Narrow	—	—	—	—
Hγ Broad	—	—	—	—
[O III] 4364	—	—	—	—
He II Narrow	—	—	—	—
He II Broad	40.33 ± 0.12	3021 ± 62	1283 ± 25	84.03 ± 12.50
H β Narrow	—	—	—	—
Hβ Broad	—	—	—	—
[O III] 5007	40.18 ± 0.09	1190 ± 471	529 ± 25	68.84 ± 8.41
He I Narrow	—	—	—	—
He I Broad	—	—	—	—
[O I] 6300	—	—	—	—
H α Narrow	39.92 ± 0.05	305 ± 62	129 ± 25	75.31 ± 5.44
Hα Broad	—	—	—	—
[N II] 6585	40.21 ± 0.03	305 ± 62	129 ± 25	145.99 ± 6.12
[S II] 6718	39.79 ± 0.07	305 ± 62	129 ± 25	58.77 ± 5.93
[S II] 6732	39.74 ± 0.08	305 ± 62	129 ± 25	52.85 ± 6.11

Emission Summary

H α broad SNR	0.80
H β broad SNR	0.00
H γ broad SNR	0.00
AGN frac	0.02
Host frac	0.98
$\log L_{5100, \text{Host}}$	43.64
Fe II/H β	—
Fe II/[O III]	6.91

Quality Flags

spurious_hab/hbb	0/0
15100	2
balmer	2
balmer_snr	2
hb_width	2
balmer_width	2