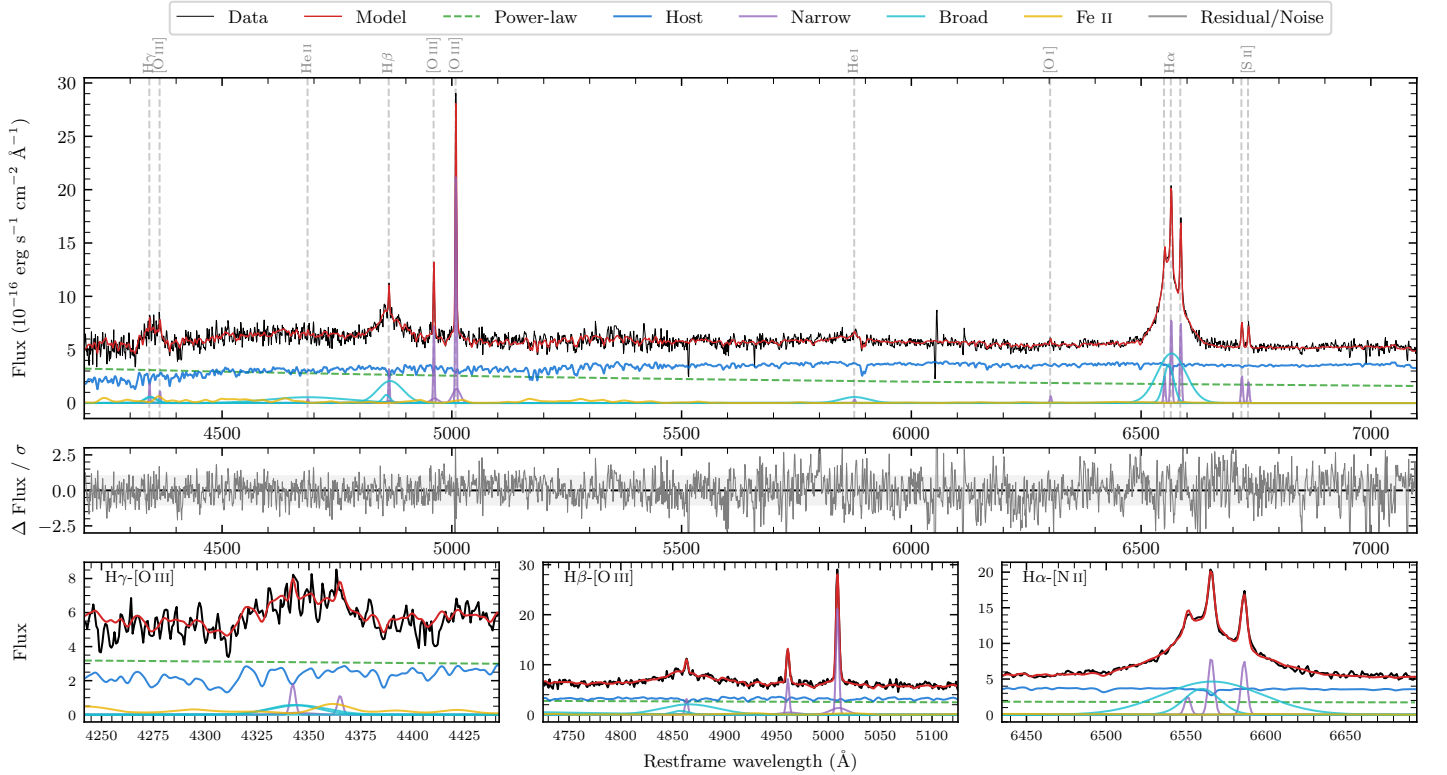
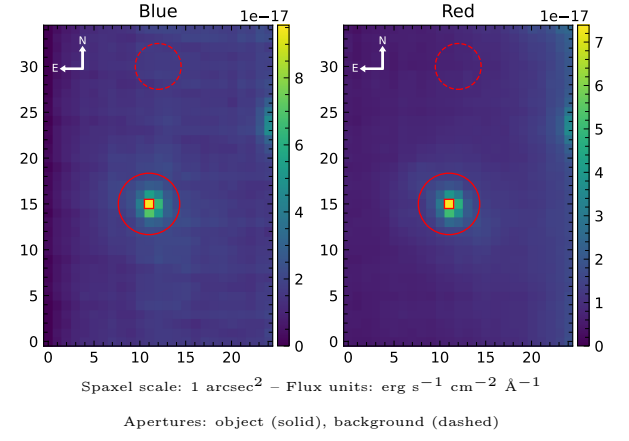


# 2MASX J08432682–0951207

Spectrum ID	75378764_sp1	Spectrum type	Sy 1.5
Alt name	g0843268–095121	Quality flag	good
$z$	0.0410	AGN reference	6dFGS
RA, Dec	130.8616, –9.8557	MW $E(B - V)$	0.038
MJD	60021.45	Power law $\alpha_\nu$	$-0.66 \pm 0.24$
SNR/ $\text{\AA}$ B/R	10.2/23.0	$\log L_{5100, \text{AGN}}$	$42.69 \pm 0.04$
Obs airmass	1.08	$\log H\beta_{\text{Br}}/[\text{O III}]$	$0.18 \pm 0.03$
SMSS ID	75378764	$\log M_{L5100}/M_\odot$	$7.34 \pm 0.10$
Neighbour	4.6", 2113897105	$\log M_{\text{H}\alpha}/M_\odot$	$6.68 \pm 0.04$
SMSS $\langle r_6 \rangle_{\text{ap}}$	$16.93 \pm 0.06$	$\log M_{\text{H}\beta}/M_\odot$	$7.29 \pm 0.10$
2MASS $K_{\text{ext}}$	$13.22 \pm 0.16$	$\log M_{[\text{O III}]} / M_\odot$	$7.33 \pm 0.10$



## Emission Line Measurements

Line	$\log L$ (erg s <sup>-1</sup> )	FWHM (km s <sup>-1</sup> )	$\sigma$ (km s <sup>-1</sup> )	EW (Å)
H $\gamma$ Narrow	$39.49 \pm 0.16$	$212 \pm 63$	$270 \pm 30$	$2.58 \pm 0.99$
<b>H<math>\gamma</math> Broad</b>	<b><math>40.19 \pm 0.09</math></b>	<b><math>2095 \pm 125</math></b>	<b><math>774 \pm 43</math></b>	<b><math>12.25 \pm 1.43</math></b>
[O III] 4364	$39.15 \pm 0.24$	$203 \pm 63$	$85 \pm 25$	$1.17 \pm 0.41$
He II Narrow	$38.73 \pm 0.40$	$203 \pm 63$	$85 \pm 25$	$0.50 \pm 0.37$
<b>He II Broad</b>	<b><math>40.68 \pm 0.06</math></b>	<b><math>12950 \pm 62</math></b>	<b><math>5499 \pm 25</math></b>	<b><math>44.05 \pm 3.22</math></b>
H $\beta$ Narrow	$39.78 \pm 0.07$	$212 \pm 63$	$270 \pm 30$	$5.86 \pm 0.91$
<b>H<math>\beta</math> Broad</b>	<b><math>40.81 \pm 0.02</math></b>	<b><math>3157 \pm 331</math></b>	<b><math>1362 \pm 40</math></b>	<b><math>61.66 \pm 1.78</math></b>
[O III] 5007	$40.62 \pm 0.02$	$212 \pm 63$	$270 \pm 30$	$42.44 \pm 0.98$
He I Narrow	$38.79 \pm 0.21$	$203 \pm 63$	$85 \pm 25$	$0.77 \pm 0.23$
<b>He I Broad</b>	<b><math>40.24 \pm 0.04</math></b>	<b><math>3659 \pm 79</math></b>	<b><math>1554 \pm 32</math></b>	<b><math>21.77 \pm 1.05</math></b>
[O I] 6300	$39.07 \pm 0.11$	$203 \pm 63$	$85 \pm 25$	$1.59 \pm 0.26$
H $\alpha$ Narrow	$40.18 \pm 0.01$	$203 \pm 63$	$85 \pm 25$	$21.94 \pm 0.33$
<b>H<math>\alpha</math> Broad</b>	<b><math>41.27 \pm 0.01</math></b>	<b><math>2047 \pm 75</math></b>	<b><math>1046 \pm 25</math></b>	<b><math>271.77 \pm 1.27</math></b>
[N II] 6585	$40.15 \pm 0.01$	$203 \pm 63$	$85 \pm 25$	$20.62 \pm 0.32$
[S II] 6718	$39.70 \pm 0.03$	$203 \pm 63$	$85 \pm 25$	$7.40 \pm 0.30$
[S II] 6732	$39.58 \pm 0.04$	$203 \pm 63$	$85 \pm 25$	$5.67 \pm 0.29$

## Emission Summary

H $\alpha$ broad SNR	14.55
H $\beta$ broad SNR	4.88
H $\gamma$ broad SNR	2.10
AGN frac	0.46
Host frac	0.54
$\log L_{5100, \text{Host}}$	42.77
Fe II/H $\beta$	0.56
Fe II/[O III]	0.85

## Quality Flags

spurious_hab/hbb	0/0
15100	1
balmer	0
balmer_snr	1
hb_width	0
balmer_width	0