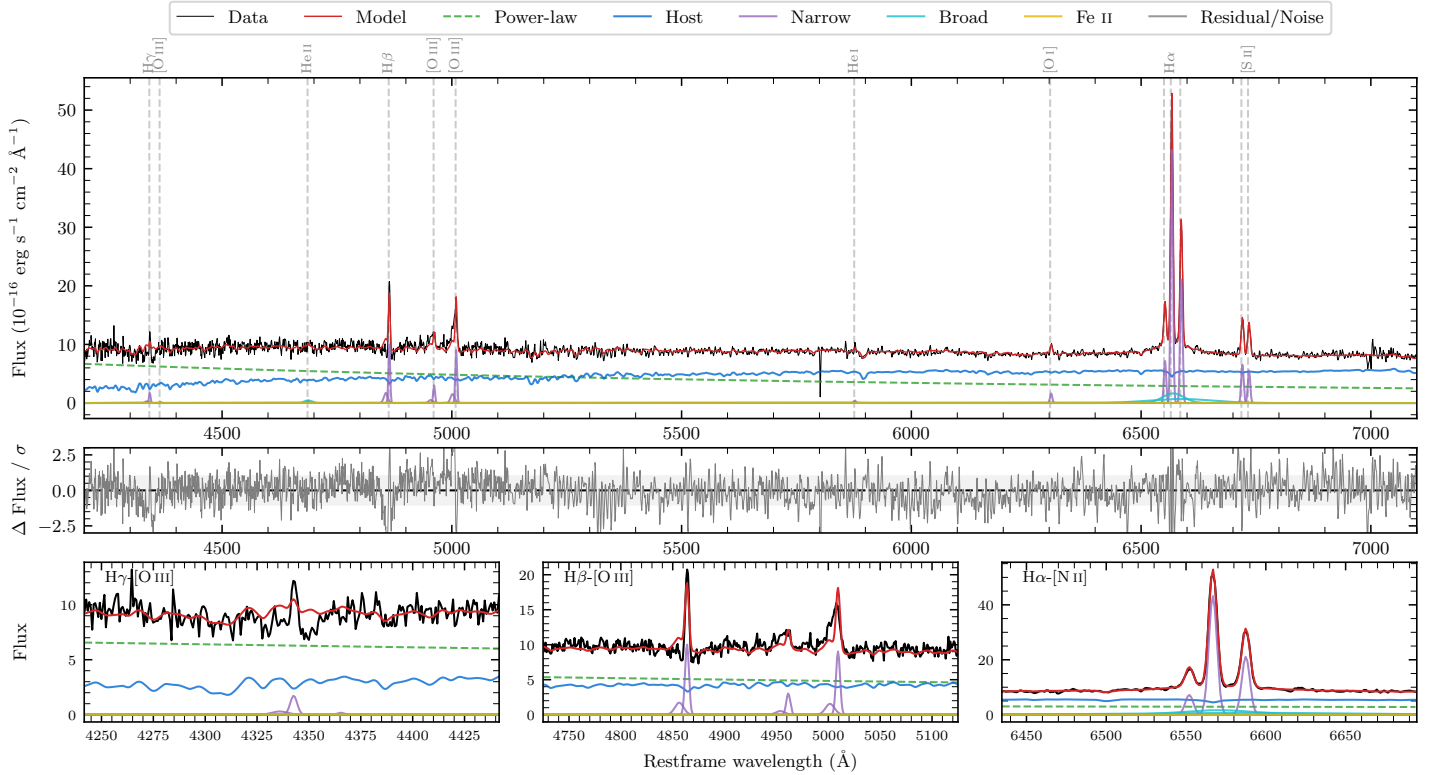
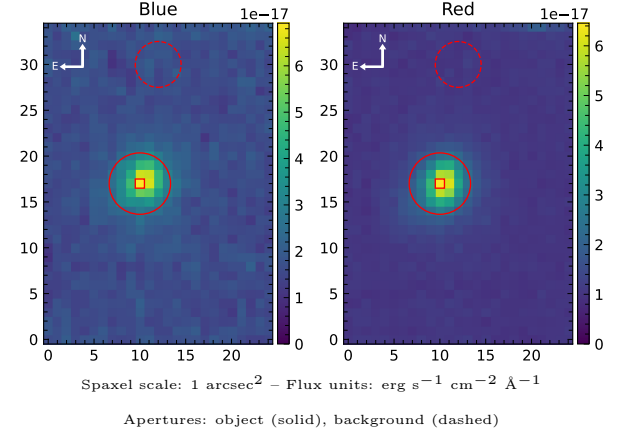


6dFGS gJ080309.5–034938

Spectrum ID	74458818_sp1	Spectrum type	Sy 1.5+
Alt name	g0803095–034938	Quality flag	good
z	0.0869	AGN reference	6dFGS
RA, Dec	120.7896, –3.8273	MW $E(B - V)$	0.032
MJD	61006.71	Power law α_ν	-0.13 ± 0.11
SNR/ \AA B/R	13.2/22.6	$\log L_{5100, \text{AGN}}$	43.65 ± 0.02
Obs airmass	1.14	$\log H\beta_{\text{Br}}/[\text{O III}]$	< -0.25
SMSS ID	74458818	$\log M_{L5100}/M_\odot$	–
Neighbour	None $< 15''$	$\log M_{\text{H}\alpha}/M_\odot$	7.28 ± 0.04
SMSS $\langle r_6''_{\text{ap}} \rangle$	16.29 ± 0.04	$\log M_{\text{H}\beta}/M_\odot$	–
2MASS K_{ext}	12.45 ± 0.09	$\log M_{[\text{O III}]} / M_\odot$	–



Emission Line Measurements

Line	$\log L$ (erg s^{-1})	FWHM (km s^{-1})	σ (km s^{-1})	EW (\AA)
H γ Narrow	40.31 ± 0.16	286 ± 63	268 ± 27	1.74 ± 0.40
Hγ Broad	–	–	–	–
[O III] 4364	–	–	–	–
He II Narrow	39.55 ± 0.46	274 ± 62	116 ± 25	0.35 ± 0.27
He II Broad	40.26 ± 0.28	1178 ± 62	500 ± 25	1.79 ± 0.59
H β Narrow	41.12 ± 0.02	286 ± 63	268 ± 27	14.00 ± 0.55
Hβ Broad	< 40.85	–	–	–
[O III] 5007	41.09 ± 0.03	286 ± 63	268 ± 27	13.72 ± 0.52
He I Narrow	39.70 ± 0.32	274 ± 62	116 ± 25	0.75 ± 0.34
He I Broad	–	–	–	–
[O I] 6300	40.31 ± 0.06	274 ± 62	116 ± 25	3.47 ± 0.32
H α Narrow	41.75 ± 0.01	274 ± 62	116 ± 25	102.85 ± 0.41
Hα Broad	41.65 ± 0.02	3140 ± 138	1771 ± 63	81.98 ± 1.91
[N II] 6585	41.44 ± 0.01	274 ± 62	116 ± 25	50.63 ± 0.38
[S II] 6718	40.94 ± 0.02	274 ± 62	116 ± 25	16.64 ± 0.40
[S II] 6732	40.87 ± 0.03	274 ± 62	116 ± 25	14.46 ± 0.43

Emission Summary

H α broad SNR	3.43
H β broad SNR	0.00
H γ broad SNR	0.00
AGN frac	0.52
Host frac	0.48
$\log L_{5100, \text{Host}}$	43.61
Fe II/H β	–
Fe II/[O III]	–

Quality Flags

spurious_hab/hbb	0/0
15100	0
balmer	2
balmer_snr	2
hb_width	2
balmer_width	2