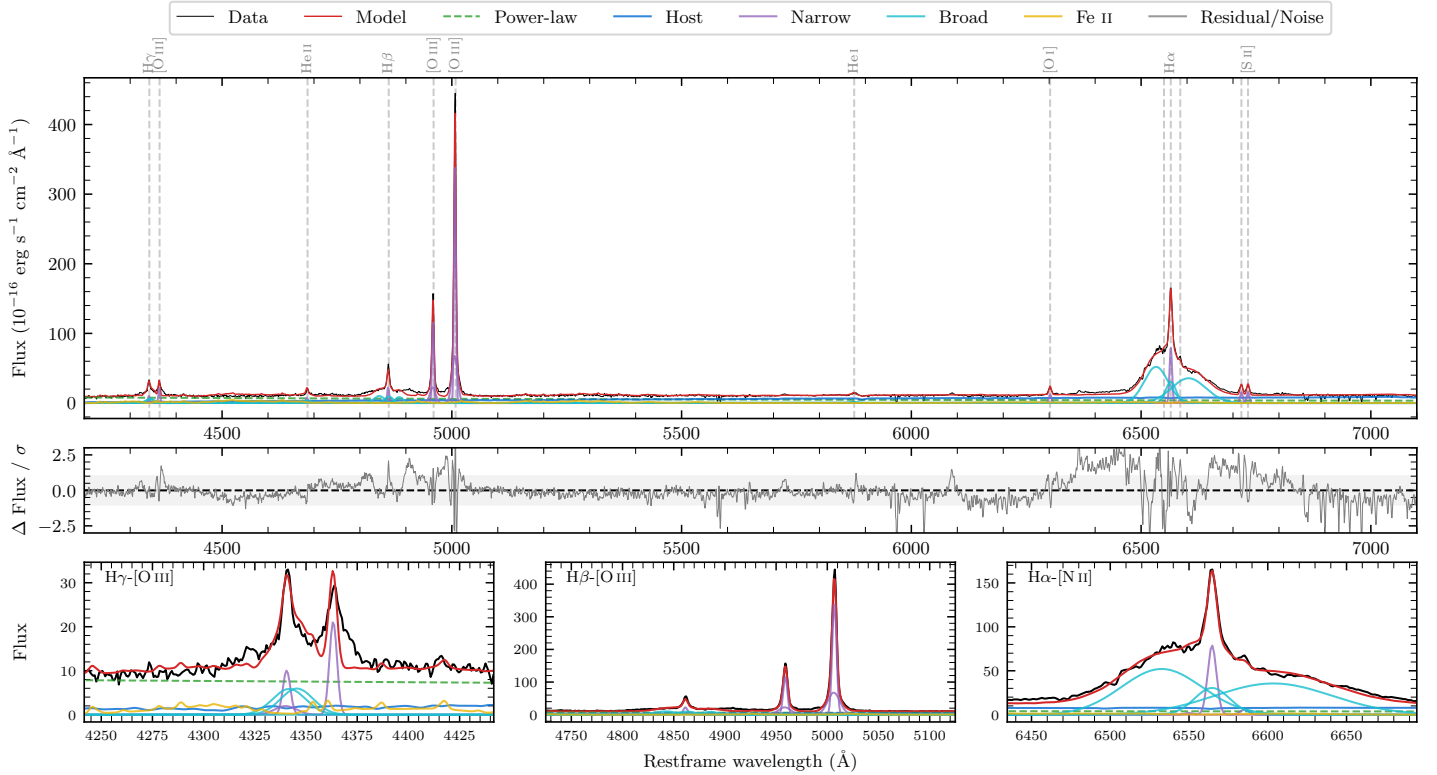
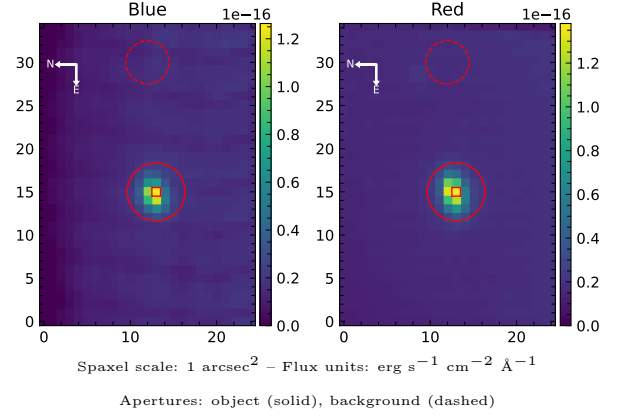


LEDA 68751

Spectrum ID	7425268_sp3	Spectrum type	Sy 1.8
Alt name	g2223495-020613	Quality flag	good
z	0.0560	AGN reference	6dFGS
RA, Dec	335.9564, -2.1036	MW $E(B - V)$	0.071
MJD	60471.8	Power law α_ν	-0.35 ± 0.61
SNR/ \AA B/R	2.8/6.2	$\log L_{5100, \text{AGN}}$	43.35 ± 0.08
Obs airmass	1.15	$\log H\beta_{\text{Br}}/[\text{O III}]$	-0.62 ± 0.05
SMSS ID	7425268	$\log M_{L5100}/M_\odot$	7.76 ± 0.11
Neighbour	14.1", 7425267	$\log M_{\text{H}\alpha}/M_\odot$	8.17 ± 0.12
SMSS $\langle r_6''_{\text{ap}} \rangle$	15.72 ± 0.05	$\log M_{\text{H}\beta}/M_\odot$	7.84 ± 0.11
2MASS K_{ext}	nan \pm nan	$\log M_{[\text{O III}]} / M_\odot$	8.31 ± 0.11



Emission Line Measurements

Line	$\log L$ (erg s^{-1})	FWHM (km s^{-1})	σ (km s^{-1})	EW (\AA)
H γ Narrow	40.80 ± 0.16	334 ± 64	241 ± 54	10.07 ± 2.37
Hγ Broad	41.30 ± 0.11	1371 ± 160	485 ± 56	33.13 ± 3.06
[O III] 4364	40.85 ± 0.09	298 ± 78	126 ± 32	13.76 ± 1.43
He II Narrow	40.45 ± 0.26	298 ± 78	126 ± 32	6.17 ± 1.37
He II Broad	40.83 ± 0.20	1292 ± 176	548 ± 74	12.53 ± 2.86
H β Narrow	41.20 ± 0.07	334 ± 64	241 ± 54	30.72 ± 2.39
Hβ Broad	41.73 ± 0.04	3689 ± 459	1232 ± 93	111.71 ± 3.83
[O III] 5007	42.35 ± 0.02	334 ± 64	241 ± 54	503.86 ± 2.88
He I Narrow	40.00 ± 0.31	298 ± 78	126 ± 32	3.19 ± 1.13
He I Broad	40.55 ± 0.20	1228 ± 83	521 ± 34	9.86 ± 2.24
[O I] 6300	40.79 ± 0.07	298 ± 78	126 ± 32	21.51 ± 1.20
H α Narrow	41.63 ± 0.08	298 ± 78	126 ± 32	151.17 ± 2.08
Hα Broad	42.77 ± 0.01	3935 ± 496	1832 ± 106	2077.73 ± 6.10
[N II] 6585	40.47 ± 0.17	298 ± 78	126 ± 32	11.14 ± 1.72
[S II] 6718	40.91 ± 0.06	298 ± 78	126 ± 32	31.93 ± 1.44
[S II] 6732	40.93 ± 0.06	298 ± 78	126 ± 32	32.85 ± 1.43

Emission Summary

H α broad SNR	19.11
H β broad SNR	3.16
H γ broad SNR	2.90
AGN frac	0.60
Host frac	0.40
$\log L_{5100, \text{Host}}$	43.17
Fe II/H β	1.09
Fe II/[O III]	0.25

Quality Flags

spurious_hab/hbb	0/0
15100	0
balmer	0
balmer_snr	1
hb_width	0
balmer_width	1