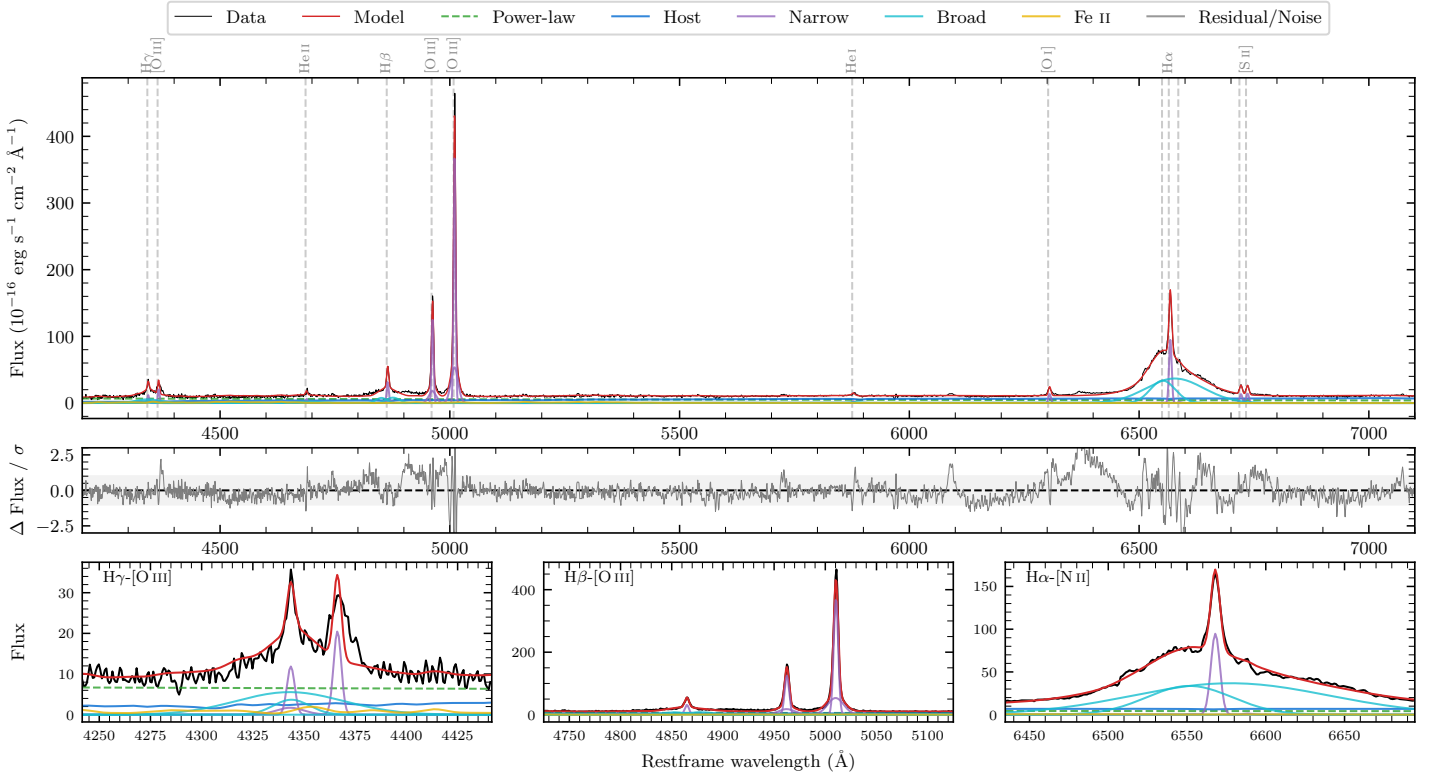
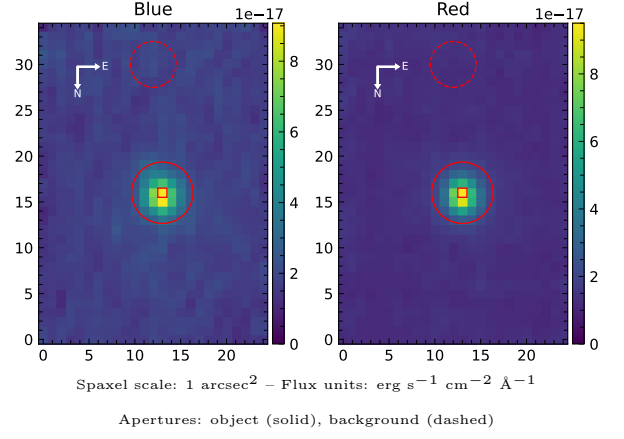


LEDA 68751

Spectrum ID	7425268_sp2	Spectrum type	Sy 1.8
Alt name	g2223495-020613	Quality flag	good
z	0.0560	AGN reference	6dFGS
RA, Dec	335.9564, -2.1036	MW $E(B - V)$	0.071
MJD	60260.43	Power law α_ν	-0.95 ± 0.71
SNR/ \AA B/R	3.5/7.5	$\log L_{5100, \text{AGN}}$	43.32 ± 0.13
Obs airmass	1.22	$\log H\beta_{\text{Br}}/[\text{O III}]$	-0.75 ± 0.12
SMSS ID	7425268	$\log M_{L5100}/M_\odot$	7.78 ± 0.40
Neighbour	14.1", 7425267	$\log M_{\text{H}\alpha}/M_\odot$	8.31 ± 0.05
SMSS $\langle r_6''_{\text{ap}} \rangle$	15.72 ± 0.05	$\log M_{\text{H}\beta}/M_\odot$	7.84 ± 0.40
2MASS K_{ext}	nan \pm nan	$\log M_{[\text{O III}]} / M_\odot$	8.36 ± 0.39



Emission Line Measurements

Line	$\log L$ (erg s ⁻¹)	FWHM (km s ⁻¹)	σ (km s ⁻¹)	EW (Å)
H γ Narrow	40.83 ± 0.13	340 ± 63	292 ± 31	13.78 ± 3.18
Hγ Broad	41.55 ± 0.10	2639 ± 888	1349 ± 342	72.13 ± 5.61
[O III] 4364	40.88 ± 0.08	308 ± 63	130 ± 25	15.83 ± 1.68
He II Narrow	40.41 ± 0.16	308 ± 63	130 ± 25	5.82 ± 1.20
He II Broad	40.98 ± 0.18	3446 ± 1192	1463 ± 506	22.79 ± 4.02
H β Narrow	41.30 ± 0.06	340 ± 63	292 ± 31	46.07 ± 2.38
Hβ Broad	41.64 ± 0.12	3854 ± 1346	1031 ± 305	92.47 ± 3.41
[O III] 5007	42.38 ± 0.01	340 ± 63	292 ± 31	579.25 ± 2.94
He I Narrow	40.15 ± 0.21	308 ± 63	130 ± 25	4.02 ± 0.84
He I Broad	40.59 ± 0.19	1438 ± 286	610 ± 121	9.88 ± 1.89
[O I] 6300	40.86 ± 0.04	308 ± 63	130 ± 25	22.24 ± 0.93
H α Narrow	41.72 ± 0.01	308 ± 63	130 ± 25	169.19 ± 2.05
Hα Broad	42.80 ± 0.01	4560 ± 217	2086 ± 116	2015.72 ± 6.18
[N II] 6585	39.89 ± 0.42	308 ± 63	130 ± 25	2.49 ± 1.48
[S II] 6718	40.89 ± 0.05	308 ± 63	130 ± 25	25.02 ± 1.08
[S II] 6732	40.91 ± 0.04	308 ± 63	130 ± 25	26.49 ± 1.07

Emission Summary

H α broad SNR	20.78
H β broad SNR	3.07
H γ broad SNR	2.92
AGN frac	0.56
Host frac	0.43
$\log L_{5100, \text{Host}}$	43.21
Fe II/H β	0.76
Fe II/[O III]	0.13

Quality Flags

spurious_hab/hbb	0/0
15100	0
balmer	0
balmer_snr	1
hb_width	1
balmer_width	2