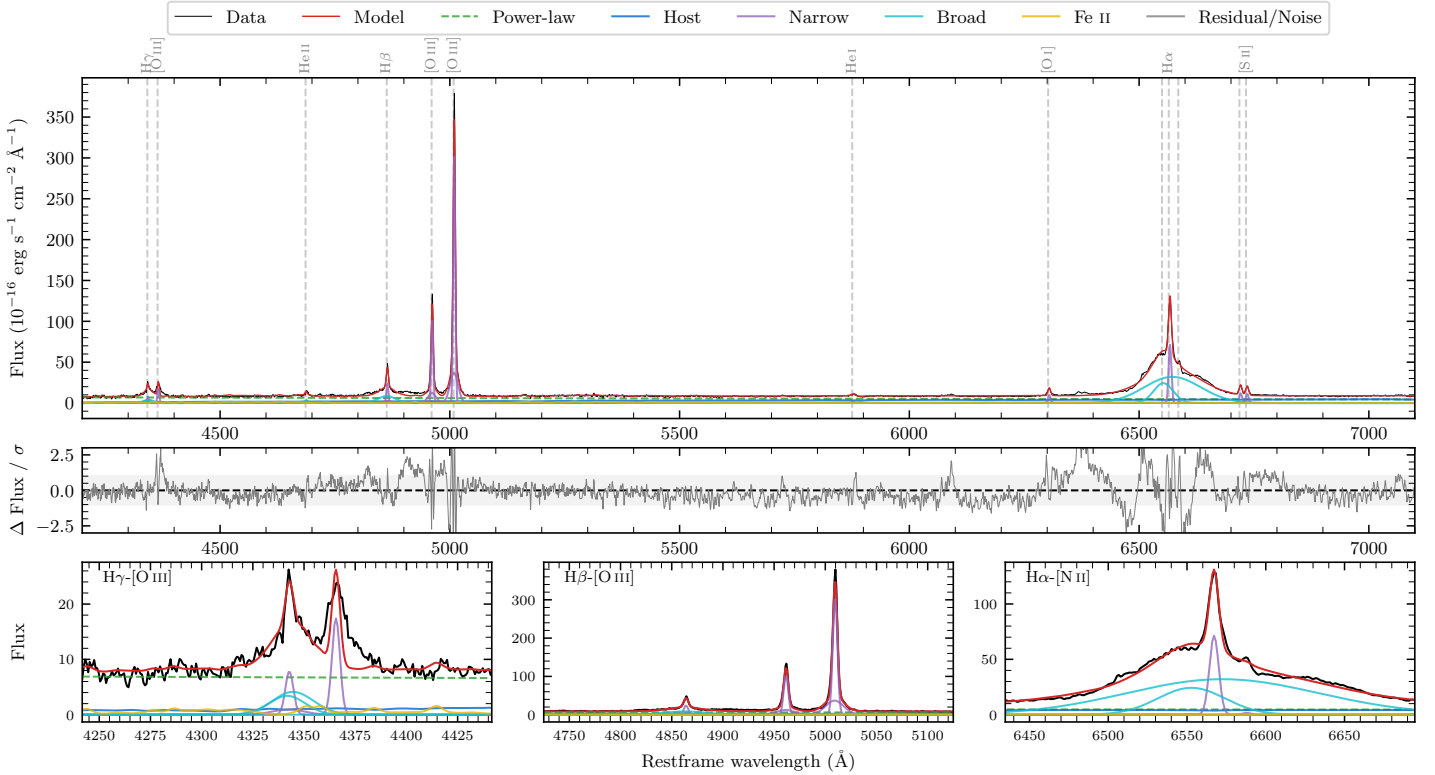
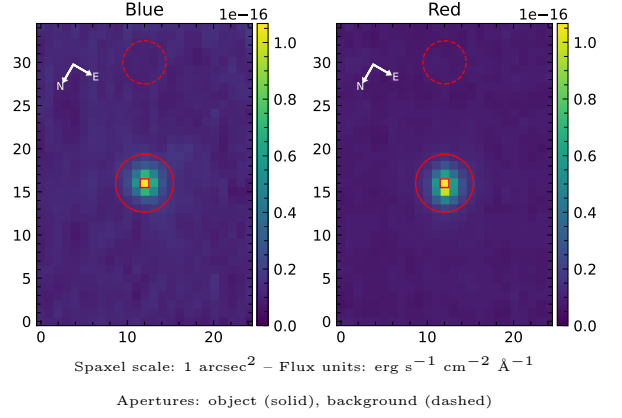


LEDA 68751

Spectrum ID	7425268_sp1	Spectrum type	Sy 1.8
Alt name	g2223495-020613	Quality flag	good
z	0.0560	AGN reference	6dFGS
RA, Dec	335.9564, -2.1036	MW $E(B - V)$	0.071
MJD	60167.63	Power law α_ν	-1.14 ± 0.69
SNR/ \AA B/R	4.3/8.8	$\log L_{5100, \text{AGN}}$	43.35 ± 0.08
Obs airmass	1.15	$\log H\beta_{\text{Br}}/[\text{O III}]$	-0.73 ± 0.06
SMSS ID	7425268	$\log M_{L5100}/M_\odot$	7.51 ± 0.20
Neighbour	14.1", 7425267	$\log M_{\text{H}\alpha}/M_\odot$	8.17 ± 0.04
SMSS $\langle r_6''_{\text{ap}} \rangle$	15.72 ± 0.05	$\log M_{\text{H}\beta}/M_\odot$	7.53 ± 0.20
2MASS K_{ext}	nan \pm nan	$\log M_{[\text{O III}]} / M_\odot$	8.04 ± 0.20



Emission Line Measurements

Line	$\log L$ (erg s^{-1})	FWHM (km s^{-1})	σ (km s^{-1})	EW (\AA)
H γ Narrow	40.66 ± 0.13	344 ± 63	317 ± 56	8.85 ± 1.61
Hγ Broad	41.18 ± 0.14	1643 ± 194	556 ± 65	27.94 ± 1.92
[O III] 4364	40.82 ± 0.07	320 ± 65	135 ± 26	13.45 ± 0.89
He II Narrow	40.21 ± 0.19	320 ± 65	135 ± 26	3.53 ± 0.76
He II Broad	40.72 ± 0.17	1661 ± 286	705 ± 121	9.89 ± 1.78
H β Narrow	41.18 ± 0.05	344 ± 63	317 ± 56	33.20 ± 1.60
Hβ Broad	41.58 ± 0.06	2783 ± 628	1032 ± 157	75.26 ± 2.44
[O III] 5007	42.30 ± 0.01	344 ± 63	317 ± 56	448.50 ± 2.07
He I Narrow	39.97 ± 0.20	320 ± 65	135 ± 26	2.46 ± 0.53
He I Broad	40.18 ± 0.28	1294 ± 114	549 ± 48	3.65 ± 1.04
[O I] 6300	40.73 ± 0.03	320 ± 65	135 ± 26	15.01 ± 0.59
H α Narrow	41.62 ± 0.04	320 ± 65	135 ± 26	117.95 ± 1.25
Hα Broad	42.69 ± 0.01	4217 ± 141	2089 ± 95	1387.40 ± 3.68
[N II] 6585	39.97 ± 0.43	320 ± 65	135 ± 26	2.67 ± 0.95
[S II] 6718	40.84 ± 0.03	320 ± 65	135 ± 26	20.43 ± 0.69
[S II] 6732	40.82 ± 0.03	320 ± 65	135 ± 26	19.41 ± 0.69

Emission Summary

H α broad SNR	26.29
H β broad SNR	4.47
H γ broad SNR	3.56
AGN frac	0.73
Host frac	0.26
$\log L_{5100, \text{Host}}$	42.91
Fe II/H β	0.71
Fe II/[O III]	0.12

Quality Flags

spurious_hab/hbb	0/0
15100	0
balmer	0
balmer_snr	0
hb_width	0
balmer_width	2