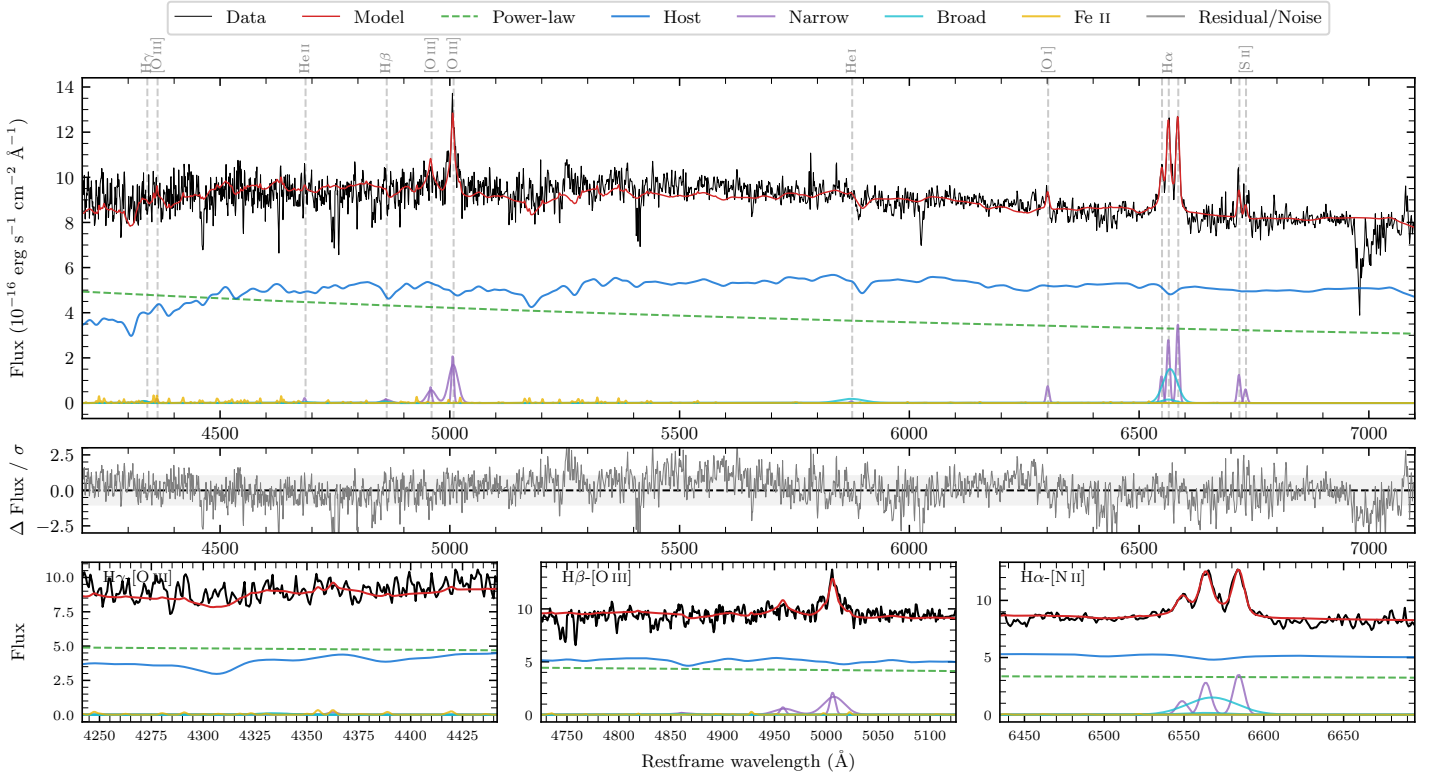
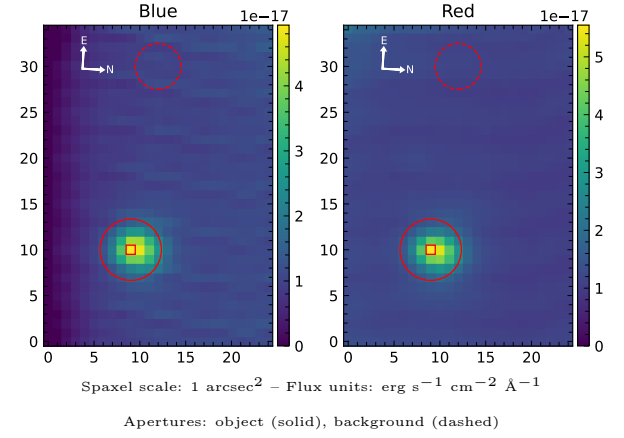


3063598699063868288

Spectrum ID	73918938_sp1	Spectrum type	Sy 1.5+
Alt name	3063598699063868288	Quality flag	good
z	0.0893	AGN reference	AllBRICS2
RA, Dec	122.2044, -8.0070	MW $E(B - V)$	0.117
MJD	59993.66	Power law α_ν	-1.10 ± 0.05
SNR/ \AA B/R	13.9/21.9	$\log L_{5100, \text{AGN}}$	43.63 ± 0.02
Obs airmass	1.70	$\log H\beta_{\text{Br}}/[\text{O III}]$	< -0.39
SMSS ID	73918938	$\log M_{L5100}/M_\odot$	—
Neighbour	5.6", 2112273373	$\log M_{\text{H}\alpha}/M_\odot$	6.43 ± 0.05
SMSS $\langle r_{6''}^{\text{ap}} \rangle$	16.08 ± 0.01	$\log M_{\text{H}\beta}/M_\odot$	—
2MASS K_{ext}	13.01 ± 0.12	$\log M_{[\text{O III}]} / M_\odot$	—



Emission Line Measurements

Line	$\log L$ (erg s $^{-1}$)	FWHM (km s $^{-1}$)	σ (km s $^{-1}$)	EW (\AA)
H γ Narrow	—	—	—	—
Hγ Broad	—	—	—	—
[O III] 4364	—	—	—	—
He II Narrow	—	—	—	—
He II Broad	—	—	—	—
H β Narrow	39.99 ± 0.41	585 ± 78	530 ± 27	1.18 ± 0.74
Hβ Broad	< 40.69	—	—	—
[O III] 5007	41.09 ± 0.04	585 ± 78	530 ± 27	14.49 ± 0.87
He I Narrow	—	—	—	—
He I Broad	40.46 ± 0.19	3467 ± 62	1472 ± 25	3.97 ± 0.93
[O I] 6300	40.12 ± 0.14	366 ± 62	154 ± 25	1.94 ± 0.37
H α Narrow	40.72 ± 0.04	366 ± 62	154 ± 25	7.89 ± 0.35
Hα Broad	41.15 ± 0.04	1662 ± 63	618 ± 25	21.23 ± 0.77
[N II] 6585	40.81 ± 0.03	366 ± 62	154 ± 25	9.87 ± 0.40
[S II] 6718	40.37 ± 0.08	366 ± 62	154 ± 25	3.65 ± 0.43
[S II] 6732	40.06 ± 0.14	366 ± 62	154 ± 25	1.79 ± 0.42

Emission Summary

H α broad SNR	2.61
H β broad SNR	0.00
H γ broad SNR	0.00
AGN frac	0.45
Host frac	0.55
$\log L_{5100, \text{Host}}$	43.71
Fe II/H β	—
Fe II/[O III]	—

Quality Flags

spurious_hab/hbb	0/0
15100	1
balmer	2
balmer_snr	2
hb_width	2
balmer_width	2