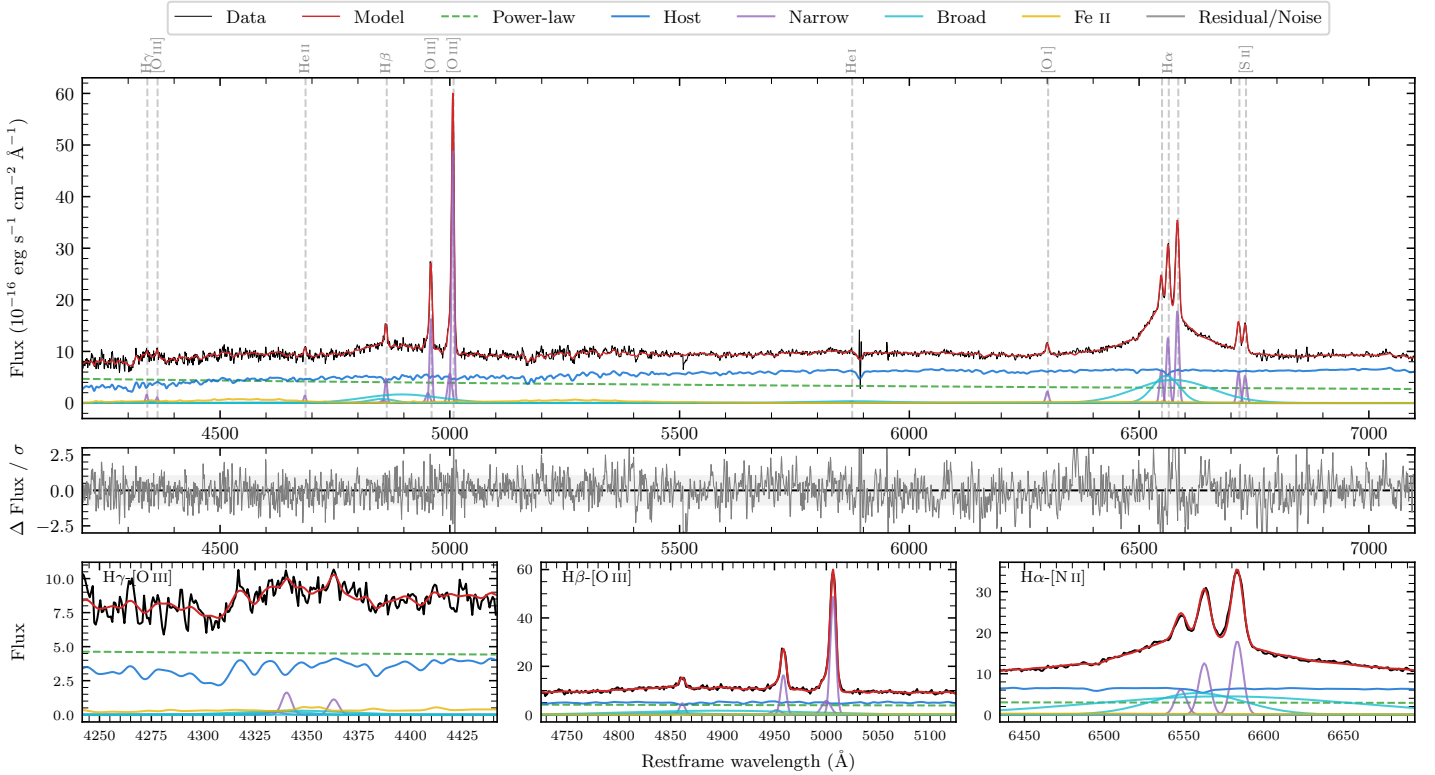
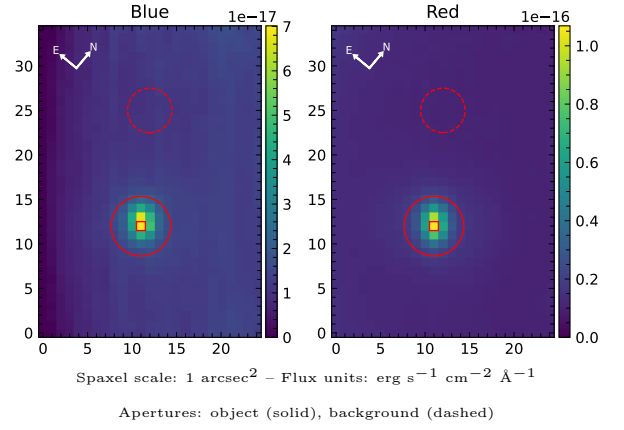


# LEDA 975127

Spectrum ID	73661627_sp1	Spectrum type	Sy 1.5
Alt name	g0814187-104101	Quality flag	good
$z$	0.0691	AGN reference	6dFGS
RA, Dec	123.5778, -10.6835	MW $E(B-V)$	0.113
MJD	59907.72	Power law $\alpha_\nu$	$-0.96 \pm 0.18$
SNR/ $\text{\AA}$ B/R	15.3/31.5	$\log L_{5100, \text{AGN}}$	$43.36 \pm 0.04$
Obs airmass	1.09	$\log H\beta_{\text{Br}}/[\text{O III}]$	$0.01 \pm 0.02$
SMSS ID	73661627	$\log M_{L5100}/M_\odot$	$8.62 \pm 0.06$
Neighbour	None $< 15''$	$\log M_{\text{H}\alpha}/M_\odot$	$7.97 \pm 0.02$
SMSS $\langle r_6 \rangle_{\text{ap}}$	$16.80 \pm 0.09$	$\log M_{\text{H}\beta}/M_\odot$	$8.69 \pm 0.06$
2MASS $K_{\text{ext}}$	$12.49 \pm 0.09$	$\log M_{[\text{O III}]} / M_\odot$	$8.84 \pm 0.05$



## Emission Line Measurements

Line	$\log L$ ( $\text{erg s}^{-1}$ )	FWHM ( $\text{km s}^{-1}$ )	$\sigma$ ( $\text{km s}^{-1}$ )	EW ( $\text{\AA}$ )
H $\gamma$ Narrow	$40.16 \pm 0.14$	$403 \pm 63$	$234 \pm 25$	$2.72 \pm 0.48$
<b>H<math>\gamma</math> Broad</b>	<b><math>40.54 \pm 0.16</math></b>	<b><math>2821 \pm 782</math></b>	<b><math>1251 \pm 170</math></b>	<b><math>5.98 \pm 1.27</math></b>
[O III] 4364	$39.92 \pm 0.17$	$388 \pm 63$	$163 \pm 25$	$1.60 \pm 0.39$
He II Narrow	$40.06 \pm 0.12$	$388 \pm 63$	$163 \pm 25$	$2.34 \pm 0.37$
<b>He II Broad</b>	—	—	—	—
H $\beta$ Narrow	$40.67 \pm 0.04$	$403 \pm 63$	$234 \pm 25$	$9.97 \pm 0.50$
<b>H<math>\beta</math> Broad</b>	<b><math>41.70 \pm 0.02</math></b>	<b><math>9915 \pm 623</math></b>	<b><math>4052 \pm 77</math></b>	<b><math>108.02 \pm 2.40</math></b>
[O III] 5007	$41.69 \pm 0.01$	$403 \pm 63$	$234 \pm 25$	$108.28 \pm 0.54$
He I Narrow	$39.39 \pm 0.27$	$388 \pm 63$	$163 \pm 25$	$0.63 \pm 0.26$
<b>He I Broad</b>	<b><math>41.02 \pm 0.06</math></b>	<b><math>11213 \pm 154</math></b>	<b><math>4762 \pm 65</math></b>	<b><math>27.30 \pm 1.50</math></b>
[O I] 6300	$40.38 \pm 0.03$	$388 \pm 63$	$163 \pm 25$	$6.65 \pm 0.29$
H $\alpha$ Narrow	$41.15 \pm 0.01$	$388 \pm 63$	$163 \pm 25$	$40.69 \pm 0.37$
<b>H<math>\alpha</math> Broad</b>	<b><math>42.22 \pm 0.01</math></b>	<b><math>4657 \pm 92</math></b>	<b><math>2597 \pm 27</math></b>	<b><math>480.56 \pm 1.73</math></b>
[N II] 6585	$41.30 \pm 0.01$	$388 \pm 63$	$163 \pm 25$	$58.52 \pm 0.38$
[S II] 6718	$40.82 \pm 0.01$	$388 \pm 63$	$163 \pm 25$	$19.58 \pm 0.36$
[S II] 6732	$40.78 \pm 0.01$	$388 \pm 63$	$163 \pm 25$	$18.04 \pm 0.36$

## Emission Summary

H $\alpha$ broad SNR	16.56
H $\beta$ broad SNR	3.92
H $\gamma$ broad SNR	1.01
AGN frac	0.44
Host frac	0.56
$\log L_{5100, \text{Host}}$	43.47
Fe II/H $\beta$	0.45
Fe II/[O III]	0.46

## Quality Flags

spurious_hab/hbb	0/0
15100	1
balmer	0
balmer_snr	1
hb_width	0
balmer_width	1