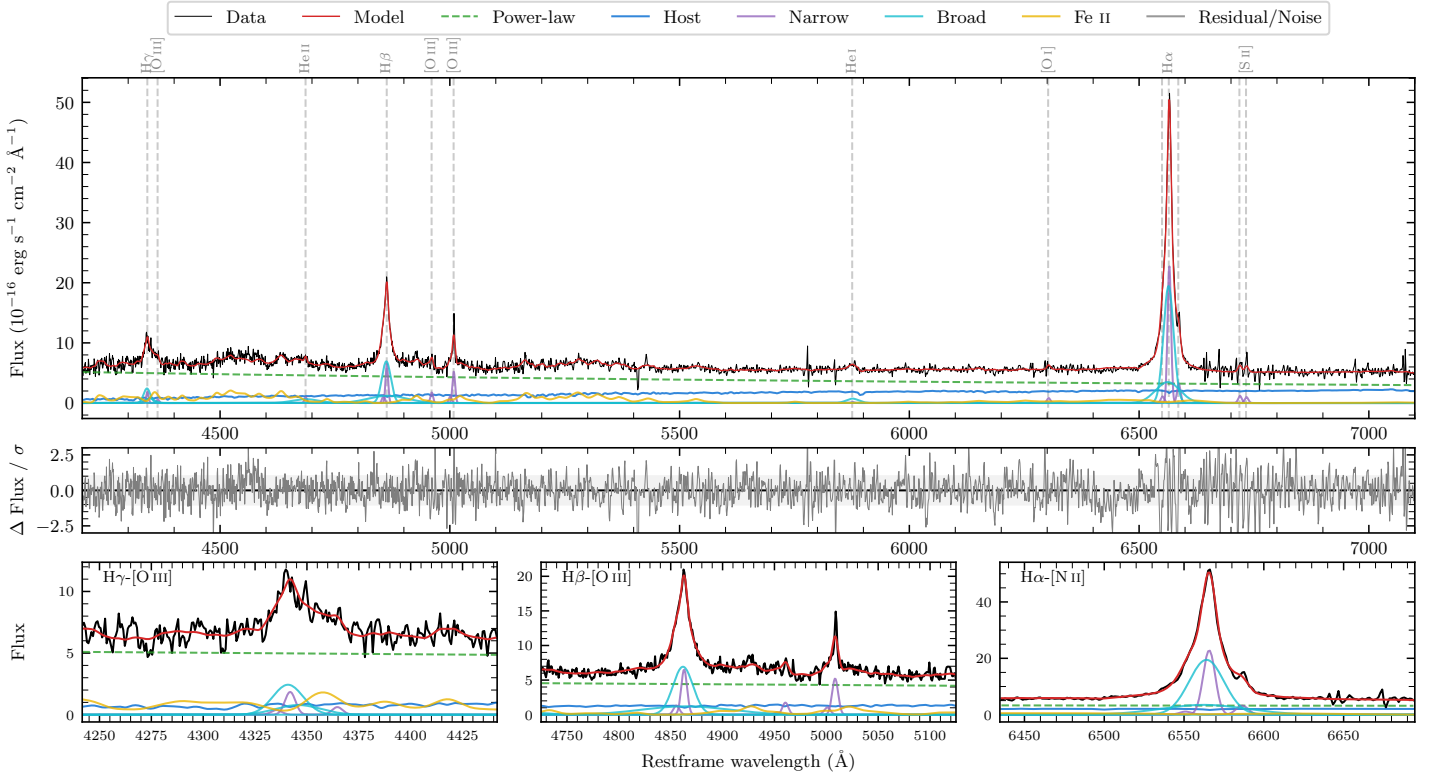
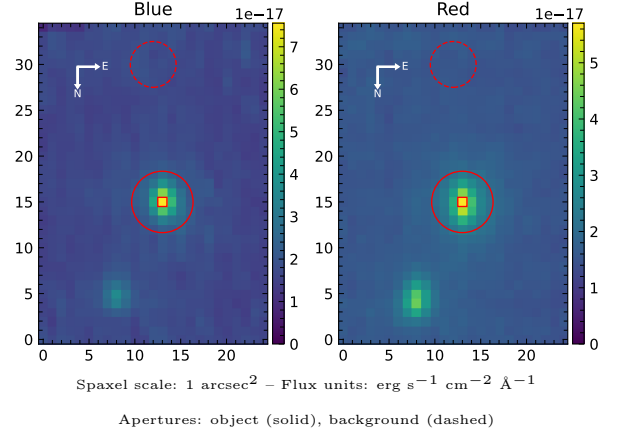


LEDA 1069301

Spectrum ID	7327079_sp1	Spectrum type	Sy 1.0
Alt name	g2215041-033527	Quality flag	good
z	0.0904	AGN reference	6dFGS
RA, Dec	333.7670, -3.5908	MW $E(B - V)$	0.074
MJD	60093.78	Power law α_ν	-0.96 ± 0.19
SNR/ \AA B/R	11.0/14.0	$\log L_{5100, \text{AGN}}$	43.64 ± 0.02
Obs airmass	1.17	$\log H\beta_{\text{Br}}/[\text{O III}]$	0.81 ± 0.03
SMSS ID	7327079	$\log M_{L5100}/M_\odot$	7.14 ± 0.04
Neighbour	11.6", 7327080	$\log M_{\text{H}\alpha}/M_\odot$	6.87 ± 0.04
SMSS $\langle r_6''_{\text{ap}} \rangle$	17.02 ± 0.07	$\log M_{\text{H}\beta}/M_\odot$	7.14 ± 0.04
2MASS K_{ext}	12.71 ± 0.08	$\log M_{[\text{O III}]} / M_\odot$	6.91 ± 0.05



Emission Line Measurements

Line	$\log L$ (erg s^{-1})	FWHM (km s^{-1})	σ (km s^{-1})	EW (\AA)
H γ Narrow	40.50 ± 0.19	438 ± 65	246 ± 28	3.09 ± 0.42
Hγ Broad	41.17 ± 0.06	1304 ± 113	485 ± 59	14.31 ± 0.74
[O III] 4364	39.94 ± 0.27	409 ± 63	173 ± 25	0.86 ± 0.35
He II Narrow	40.18 ± 0.15	409 ± 63	173 ± 25	1.60 ± 0.35
He II Broad	41.01 ± 0.08	4260 ± 199	1809 ± 84	10.86 ± 1.11
H β Narrow	41.10 ± 0.06	438 ± 65	246 ± 28	13.76 ± 0.44
Hβ Broad	41.82 ± 0.02	1566 ± 71	1023 ± 54	72.66 ± 1.44
[O III] 5007	41.01 ± 0.03	438 ± 65	246 ± 28	11.69 ± 0.46
He I Narrow	39.52 ± 0.41	409 ± 63	173 ± 25	0.45 ± 0.29
He I Broad	40.75 ± 0.07	1601 ± 103	680 ± 43	7.43 ± 0.70
[O I] 6300	40.23 ± 0.12	409 ± 63	173 ± 25	2.47 ± 0.42
H α Narrow	41.69 ± 0.02	409 ± 63	173 ± 25	73.46 ± 0.51
Hα Broad	42.23 ± 0.01	1295 ± 63	568 ± 25	259.32 ± 1.24
[N II] 6585	40.84 ± 0.04	409 ± 63	173 ± 25	10.45 ± 0.44
[S II] 6718	40.41 ± 0.07	409 ± 63	173 ± 25	4.01 ± 0.60
[S II] 6732	40.33 ± 0.10	409 ± 63	173 ± 25	3.32 ± 0.53

Emission Summary

H α broad SNR	37.49
H β broad SNR	13.29
H γ broad SNR	5.14
AGN frac	0.77
Host frac	0.23
$\log L_{5100, \text{Host}}$	43.12
Fe II/H β	1.33
Fe II/[O III]	8.51

Quality Flags

spurious_hab/hbb	0/0
15100	0
balmer	0
balmer_snr	0
hb_width	1
balmer_width	0