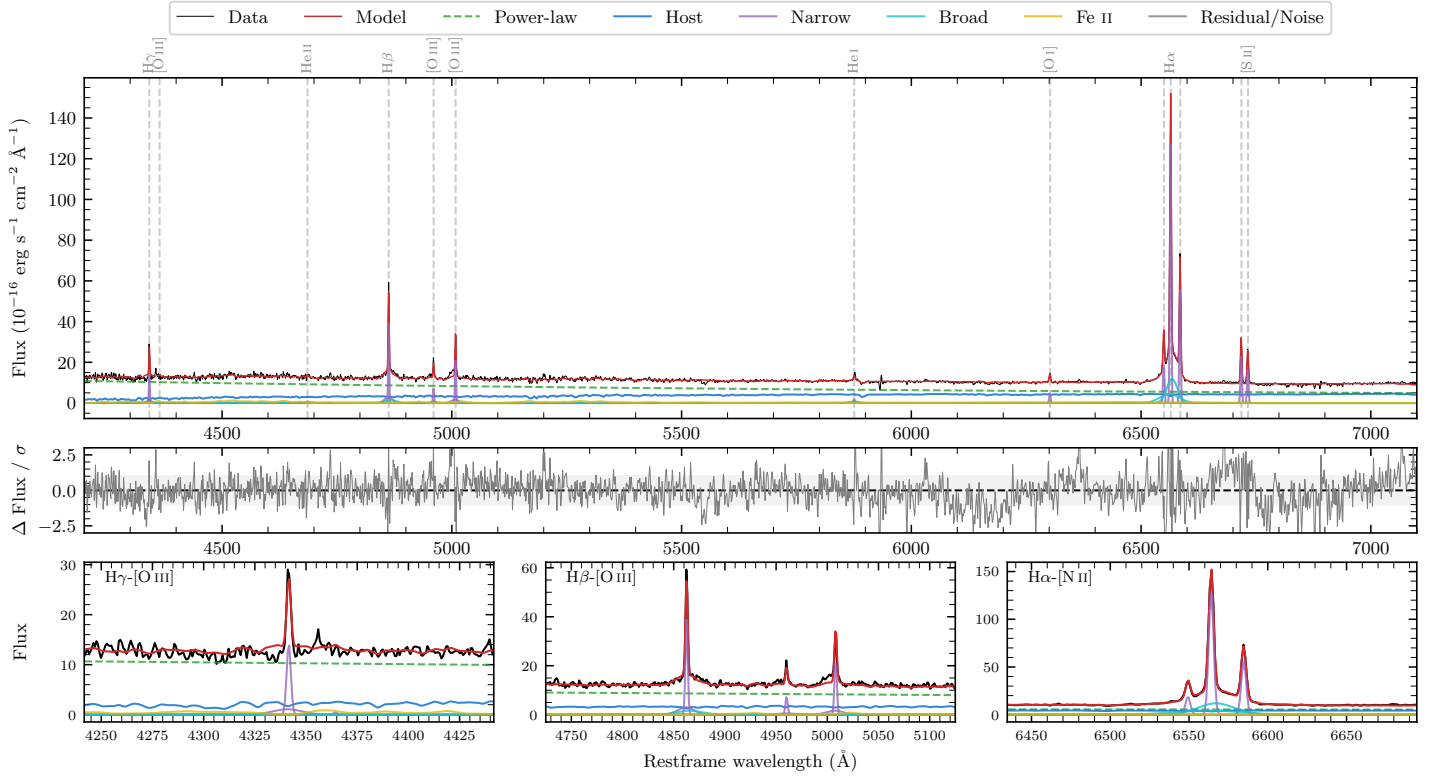
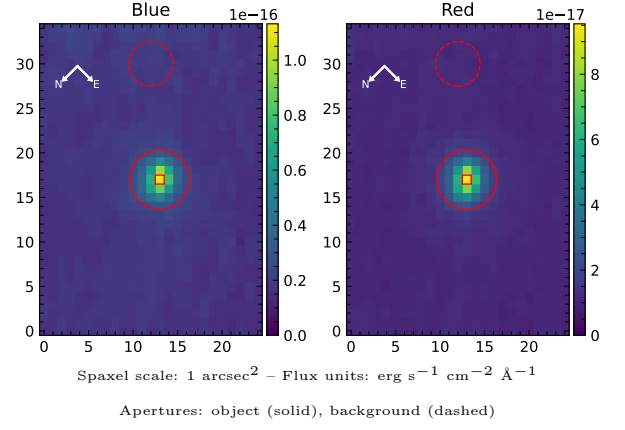


LEDA 2816600

Spectrum ID	73163031_sp1	Spectrum type	Sy 1.5
Alt name	g0803200-103835	Quality flag	good
z	0.0622	AGN reference	6dFGS
RA, Dec	120.8334, -10.6430	MW $E(B - V)$	0.079
MJD	60286.66	Power law α_ν	-0.48 ± 0.12
SNR/ \AA B/R	14.1/23.6	$\log L_{5100, \text{AGN}}$	43.58 ± 0.02
Obs airmass	1.11	$\log H\beta_{\text{Br}}/[\text{O III}]$	-0.23 ± 0.10
SMSS ID	73163031	$\log M_{L5100}/M_\odot$	7.22 ± 0.05
Neighbour	None $< 15''$	$\log M_{\text{H}\alpha}/M_\odot$	6.67 ± 0.04
SMSS $\langle r_6'' \text{ap} \rangle$	16.32 ± 0.04	$\log M_{\text{H}\beta}/M_\odot$	6.77 ± 0.08
2MASS K_{ext}	12.35 ± 0.10	$\log M_{[\text{O III}]} / M_\odot$	7.00 ± 0.05



Emission Line Measurements

Line	$\log L$ (erg s ⁻¹)	FWHM (km s ⁻¹)	σ (km s ⁻¹)	EW (Å)
H γ Narrow	40.74 ± 0.04	185 ± 62	298 ± 30	5.79 ± 0.45
Hγ Broad	—	—	—	—
[O III] 4364	—	—	—	—
He II Narrow	39.34 ± 0.37	168 ± 62	71 ± 25	0.26 ± 0.15
He II Broad	40.06 ± 0.25	1197 ± 66	508 ± 27	1.31 ± 0.42
H β Narrow	41.23 ± 0.02	185 ± 62	298 ± 30	21.21 ± 0.44
Hβ Broad	40.75 ± 0.10	1770 ± 87	655 ± 33	6.67 ± 0.54
[O III] 5007	40.99 ± 0.02	185 ± 62	298 ± 30	12.63 ± 0.44
He I Narrow	39.87 ± 0.09	168 ± 62	71 ± 25	1.23 ± 0.15
He I Broad	40.33 ± 0.09	1357 ± 72	576 ± 29	3.47 ± 0.37
[O I] 6300	40.24 ± 0.04	168 ± 62	71 ± 25	3.15 ± 0.14
H α Narrow	41.69 ± 0.01	168 ± 62	71 ± 25	96.12 ± 0.25
Hα Broad	41.76 ± 0.01	1432 ± 66	582 ± 25	111.81 ± 0.65
[N II] 6585	41.33 ± 0.01	168 ± 62	71 ± 25	41.97 ± 0.20
[S II] 6718	40.95 ± 0.01	168 ± 62	71 ± 25	17.98 ± 0.17
[S II] 6732	40.82 ± 0.01	168 ± 62	71 ± 25	13.26 ± 0.17

Emission Summary

H α broad SNR	19.04
H β broad SNR	2.21
H γ broad SNR	0.00
AGN frac	0.73
Host frac	0.27
$\log L_{5100, \text{Host}}$	43.16
Fe II/H β	3.94
Fe II/[O III]	2.18

Quality Flags

spurious_hab/hbb	0/0
15100	0
balmer	1
balmer_snr	2
hb_width	0
balmer_width	0