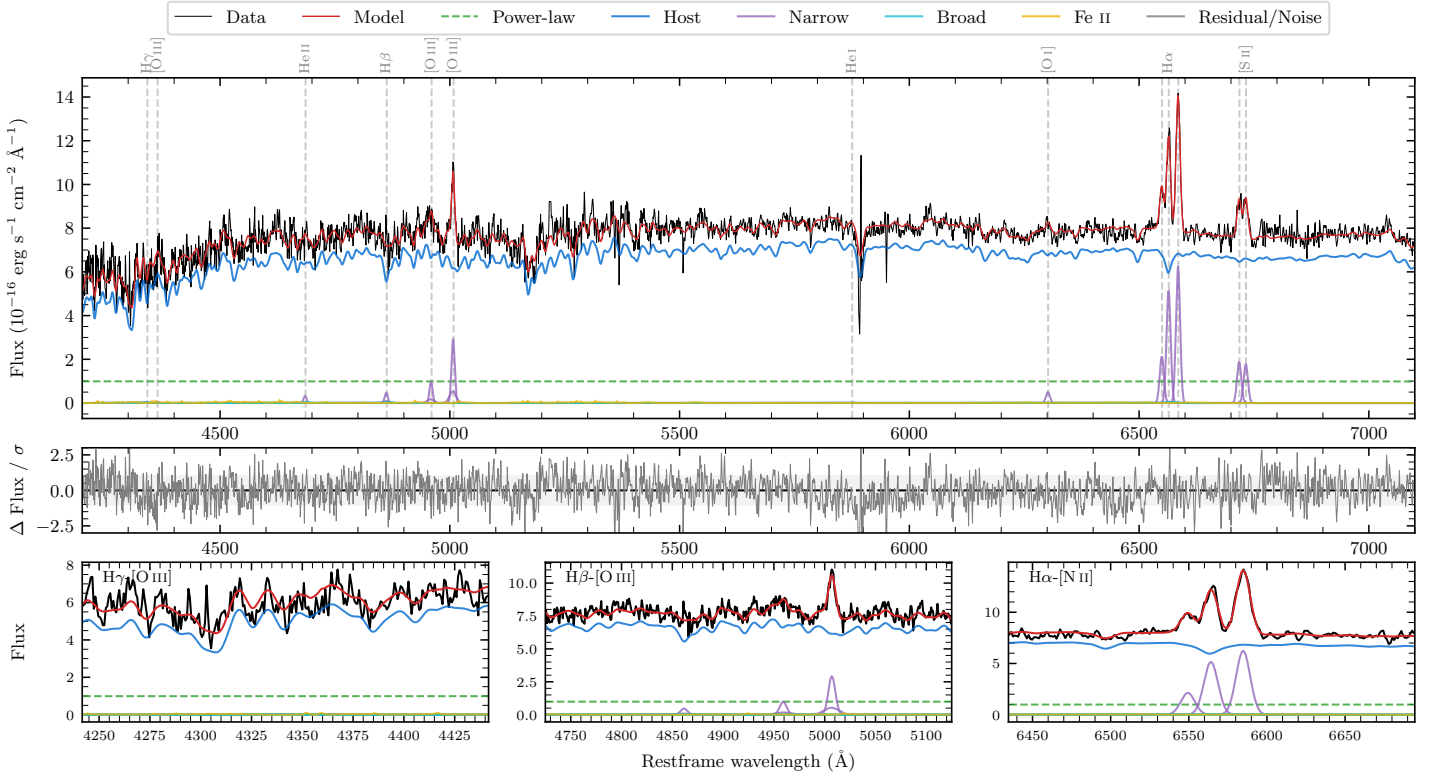
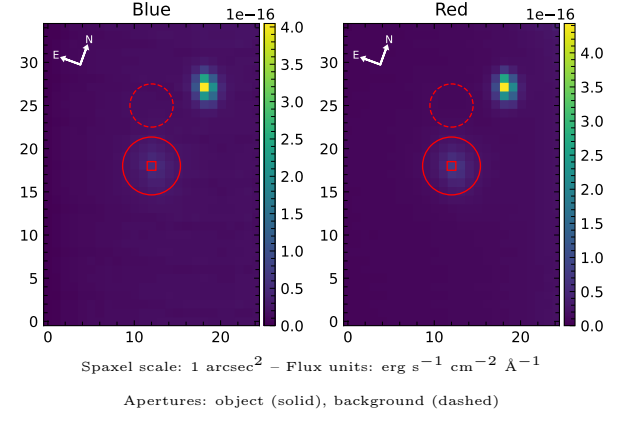


6dFGS gJ082101.2–115425

Spectrum ID	71757944_sp1	Spectrum type	Sy 2
Alt name	g0821012–115425	Quality flag	good
z	0.0691	AGN reference	6dFGS
RA, Dec	125.2552, –11.9068	MW $E(B - V)$	0.058
MJD	60399.39	Power law α_ν	-1.99 ± 0.01
SNR/ \AA B/R	16.7/26.4	$\log L_{5100, \text{AGN}}$	42.77 ± 0.08
Obs airmass	1.07	$\log H\beta_{\text{Br}}/[\text{O III}]$	–
SMSS ID	71757944	$\log M_{L5100}/M_\odot$	–
Neighbour	10.9", 71757945	$\log M_{H\alpha}/M_\odot$	–
SMSS $\langle r_6^{\text{ap}} \rangle$	16.41 ± 0.02	$\log M_{H\beta}/M_\odot$	–
2MASS K_{ext}	12.37 ± 0.09	$\log M_{[\text{O III}]} / M_\odot$	–



Emission Line Measurements

Line	$\log L$ (erg s $^{-1}$)	FWHM (km s $^{-1}$)	σ (km s $^{-1}$)	EW (Å)
H γ Narrow	–	–	–	–
Hγ Broad	–	–	–	–
[O III] 4364	–	–	–	–
He II Narrow	39.51 ± 0.32	483 ± 62	205 ± 25	2.78 ± 1.24
He II Broad	–	–	–	–
H β Narrow	39.84 ± 0.22	526 ± 67	285 ± 38	5.85 ± 1.80
Hβ Broad	–	–	–	–
[O III] 5007	40.64 ± 0.03	526 ± 67	285 ± 38	37.36 ± 1.87
He I Narrow	–	–	–	–
He I Broad	–	–	–	–
[O I] 6300	39.83 ± 0.12	483 ± 62	205 ± 25	5.85 ± 1.01
H α Narrow	40.86 ± 0.02	483 ± 62	205 ± 25	62.84 ± 1.08
Hα Broad	–	–	–	–
[N II] 6585	40.94 ± 0.01	483 ± 62	205 ± 25	76.19 ± 1.07
[S II] 6718	40.43 ± 0.04	483 ± 62	205 ± 25	23.44 ± 1.15
[S II] 6732	40.41 ± 0.04	483 ± 62	205 ± 25	22.29 ± 1.15

Emission Summary

H α broad SNR	0.27
H β broad SNR	0.00
H γ broad SNR	0.00
AGN frac	0.13
Host frac	0.87
$\log L_{5100, \text{Host}}$	43.58
Fe II/H β	–
Fe II/[O III]	–

Quality Flags

spurious_hab/hbb	0/0
15100	2
balmer	2
balmer_snr	2
hb_width	2
balmer_width	2