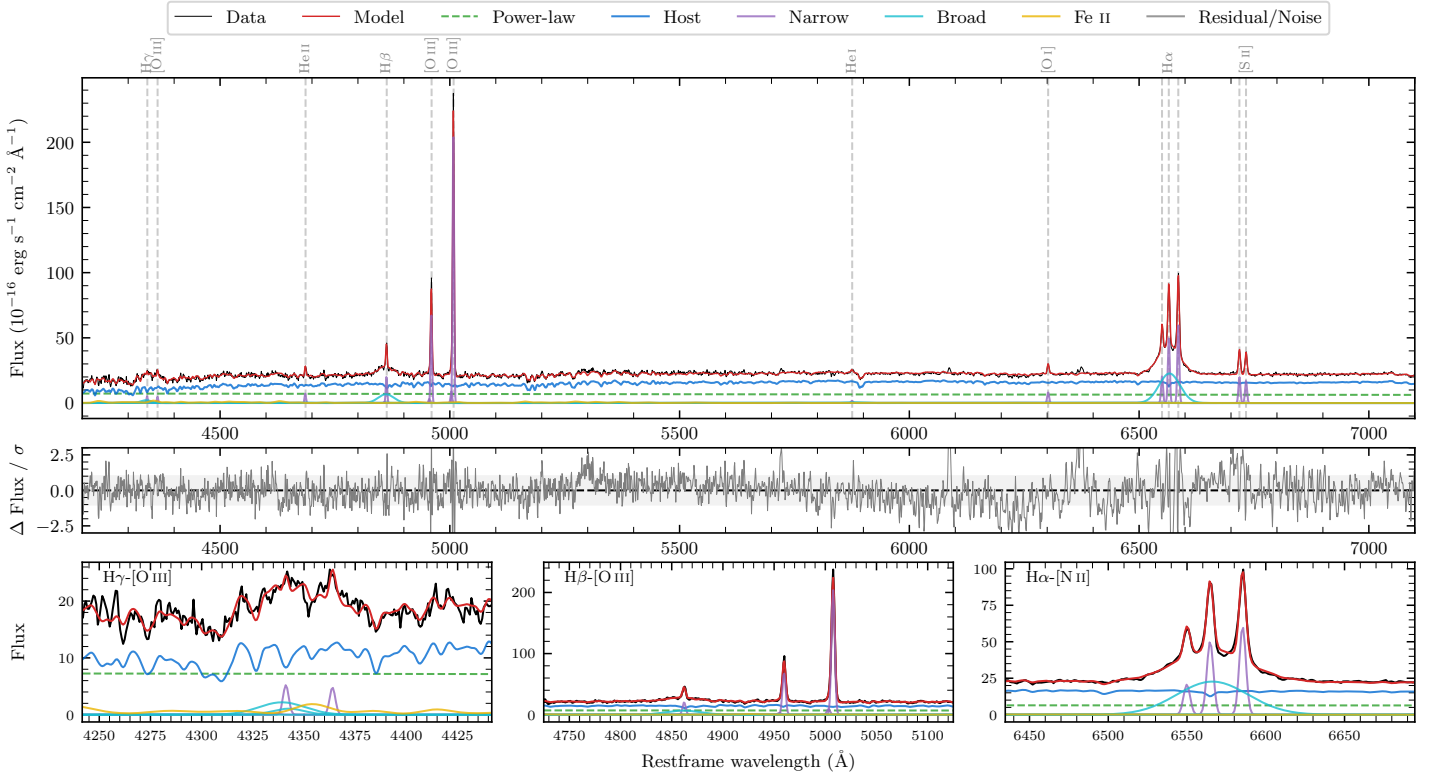
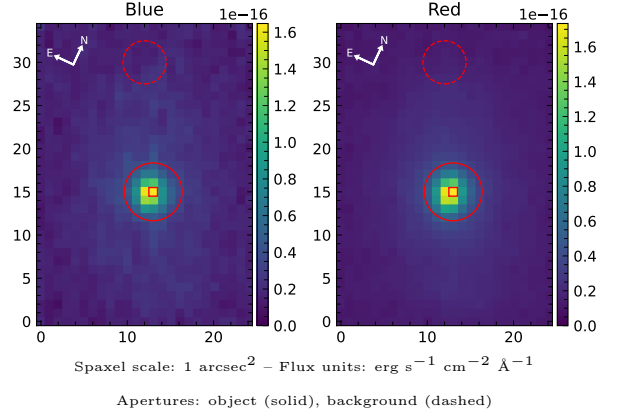


# NGC 7450

Spectrum ID	7107556_sp1	Spectrum type	Sy 1.5
Alt name	g2300478-125507	Quality flag	good
$z$	0.0104	AGN reference	6dFGS
RA, Dec	345.1992, -12.9185	MW $E(B - V)$	0.038
MJD	60176.61	Power law $\alpha_\nu$	$-1.71 \pm 0.20$
SNR/ $\text{\AA}$ B/R	15.7/30.5	$\log L_{5100, \text{AGN}}$	$41.94 \pm 0.05$
Obs airmass	1.06	$\log H\beta_{\text{Br}}/[\text{O III}]$	$-0.46 \pm 0.02$
SMSS ID	7107556	$\log M_{L5100}/M_\odot$	$6.77 \pm 0.06$
Neighbour	6.5", 2012131178	$\log M_{\text{H}\alpha}/M_\odot$	$6.37 \pm 0.06$
SMSS $\langle r_6'' \text{ap} \rangle$	$14.77 \pm 0.04$	$\log M_{\text{H}\beta}/M_\odot$	$6.62 \pm 0.08$
2MASS $K_{\text{ext}}$	$10.14 \pm 0.04$	$\log M_{[\text{O III}]} / M_\odot$	$6.94 \pm 0.06$



## Emission Line Measurements

Line	$\log L$ ( $\text{erg s}^{-1}$ )	FWHM ( $\text{km s}^{-1}$ )	$\sigma$ ( $\text{km s}^{-1}$ )	EW ( $\text{\AA}$ )
H $\gamma$ Narrow	$38.67 \pm 0.16$	$228 \pm 62$	$110 \pm 25$	$2.64 \pm 0.50$
<b>H<math>\gamma</math> Broad</b>	<b><math>39.34 \pm 0.09</math></b>	<b><math>1630 \pm 184</math></b>	<b><math>649 \pm 50</math></b>	<b><math>11.47 \pm 1.26</math></b>
[O III] 4364	$38.62 \pm 0.14$	$228 \pm 62$	$95 \pm 25$	$2.33 \pm 0.43$
He II Narrow	$38.83 \pm 0.07$	$228 \pm 62$	$95 \pm 25$	$3.88 \pm 0.35$
<b>He II Broad</b>	<b><math>38.28 \pm 0.45</math></b>	<b><math>1789 \pm 63</math></b>	<b><math>760 \pm 25</math></b>	<b><math>1.09 \pm 0.91</math></b>
H $\beta$ Narrow	$39.31 \pm 0.03$	$228 \pm 62$	$110 \pm 25$	$11.89 \pm 0.42$
<b>H<math>\beta</math> Broad</b>	<b><math>39.87 \pm 0.02</math></b>	<b><math>2376 \pm 74</math></b>	<b><math>887 \pm 25</math></b>	<b><math>42.09 \pm 1.21</math></b>
[O III] 5007	$40.33 \pm 0.01$	$228 \pm 62$	$110 \pm 25$	$124.18 \pm 0.49$
He I Narrow	$38.33 \pm 0.19$	$228 \pm 62$	$95 \pm 25$	$1.31 \pm 0.72$
<b>He I Broad</b>	<b><math>38.78 \pm 0.19</math></b>	<b><math>1937 \pm 66</math></b>	<b><math>822 \pm 26</math></b>	<b><math>3.69 \pm 1.69</math></b>
[O I] 6300	$39.02 \pm 0.03$	$228 \pm 62$	$95 \pm 25$	$6.49 \pm 0.27$
H $\alpha$ Narrow	$39.82 \pm 0.01$	$228 \pm 62$	$95 \pm 25$	$41.50 \pm 0.32$
<b>H<math>\alpha</math> Broad</b>	<b><math>40.51 \pm 0.01</math></b>	<b><math>2421 \pm 65</math></b>	<b><math>879 \pm 25</math></b>	<b><math>204.62 \pm 0.91</math></b>
[N II] 6585	$39.90 \pm 0.01$	$228 \pm 62$	$95 \pm 25$	$50.12 \pm 0.32$
[S II] 6718	$39.43 \pm 0.01$	$228 \pm 62$	$95 \pm 25$	$17.12 \pm 0.26$
[S II] 6732	$39.36 \pm 0.01$	$228 \pm 62$	$95 \pm 25$	$14.54 \pm 0.26$

## Emission Summary

H $\alpha$ broad SNR	16.54
H $\beta$ broad SNR	5.15
H $\gamma$ broad SNR	2.49
AGN frac	0.34
Host frac	0.66
$\log L_{5100, \text{Host}}$	42.22
Fe II/H $\beta$	0.76
Fe II/[O III]	0.26

## Quality Flags

spurious_hab/hbb	0/0
15100	1
balmer	0
balmer_snr	1
hb_width	0
balmer_width	1