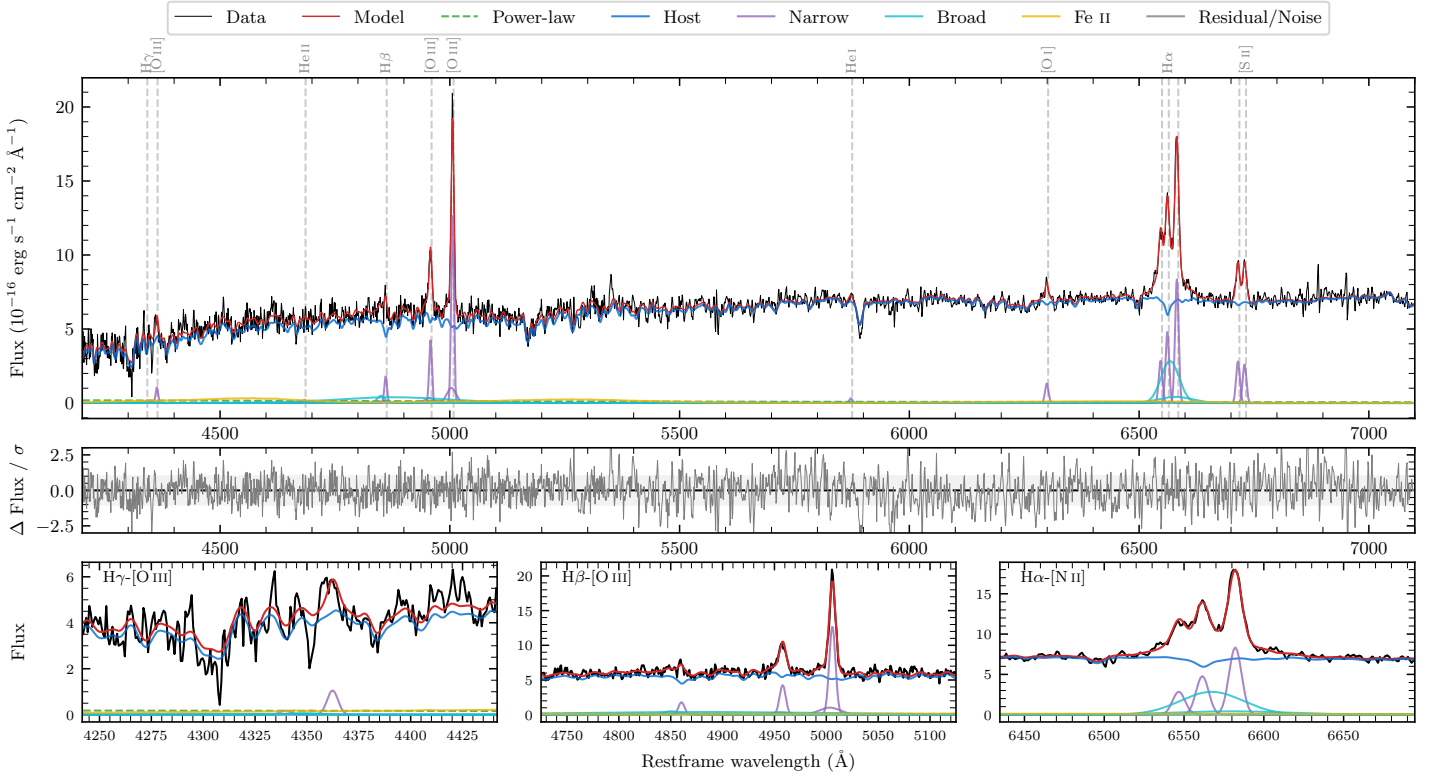
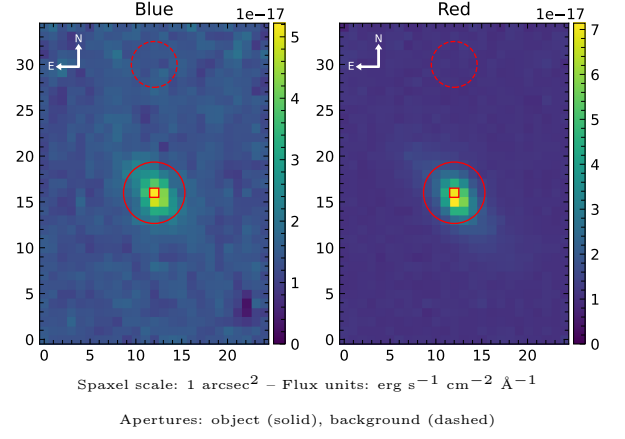


# NVSS J223024–073310

Spectrum ID	7008632_sp1	Spectrum type	Sy 1.8+
Alt name	g2230248–073303	Quality flag	good
$z$	0.0558	AGN reference	6dFGS
RA, Dec	337.6033, –7.5510	MW $E(B - V)$	0.043
MJD	60910.55	Power law $\alpha_\nu$	$0.45 \pm 0.07$
SNR/ $\text{\AA}$ B/R	10.7/24.2	$\log L_{5100, \text{AGN}}$	$41.64 \pm 0.39$
Obs airmass	1.14	$\log H\beta_{\text{Br}}/[\text{O III}]$	$< -0.74$
SMSS ID	7008632	$\log M_{L5100}/M_\odot$	–
Neighbour	None $< 15''$	$\log M_{\text{H}\alpha}/M_\odot$	$6.70 \pm 0.05$
SMSS $\langle r_6''_{\text{ap}} \rangle$	$16.64 \pm 0.02$	$\log M_{\text{H}\beta}/M_\odot$	–
2MASS $K_{\text{ext}}$	$12.53 \pm 0.10$	$\log M_{[\text{O III}]} / M_\odot$	–



## Emission Line Measurements

Line	$\log L$ (erg s $^{-1}$ )	FWHM (km s $^{-1}$ )	$\sigma$ (km s $^{-1}$ )	EW (Å)
H $\gamma$ Narrow	–	–	–	–
<b>H<math>\gamma</math> Broad</b>	–	–	–	–
[O III] 4364	$39.74 \pm 0.16$	$423 \pm 62$	$179 \pm 25$	$43.51 \pm 9.85$
He II Narrow	$39.11 \pm 0.43$	$423 \pm 62$	$179 \pm 25$	$12.01 \pm 10.14$
<b>He II Broad</b>	–	–	–	–
H $\beta$ Narrow	$40.12 \pm 0.08$	$447 \pm 63$	$325 \pm 33$	$136.61 \pm 19.38$
<b>H<math>\beta</math> Broad</b>	$< 40.25$	–	–	–
[O III] 5007	$40.99 \pm 0.02$	$447 \pm 63$	$325 \pm 33$	$1069.35 \pm 21.65$
He I Narrow	$39.35 \pm 0.23$	$423 \pm 62$	$179 \pm 25$	$36.54 \pm 10.64$
<b>He I Broad</b>	–	–	–	–
[O I] 6300	$40.00 \pm 0.05$	$423 \pm 62$	$179 \pm 25$	$192.90 \pm 12.47$
H $\alpha$ Narrow	$40.58 \pm 0.02$	$423 \pm 62$	$179 \pm 25$	$804.69 \pm 17.72$
<b>H<math>\alpha</math> Broad</b>	<b><math>41.16 \pm 0.02</math></b>	<b><math>2260 \pm 77</math></b>	<b><math>889 \pm 47</math></b>	<b><math>3062.66 \pm 48.48</math></b>
[N II] 6585	$40.82 \pm 0.01$	$423 \pm 62$	$179 \pm 25$	$1419.09 \pm 18.62$
[S II] 6718	$40.35 \pm 0.02$	$423 \pm 62$	$179 \pm 25$	$511.32 \pm 15.95$
[S II] 6732	$40.32 \pm 0.02$	$423 \pm 62$	$179 \pm 25$	$478.49 \pm 15.82$

## Emission Summary

H $\alpha$ broad SNR	6.07
H $\beta$ broad SNR	0.92
H $\gamma$ broad SNR	0.00
AGN frac	0.02
Host frac	0.98
$\log L_{5100, \text{Host}}$	43.32
Fe II/H $\beta$	–
Fe II/[O III]	–

## Quality Flags

spurious_hab/hbb	0/1
15100	2
balmer	2
balmer_snr	2
hb_width	2
balmer_width	2