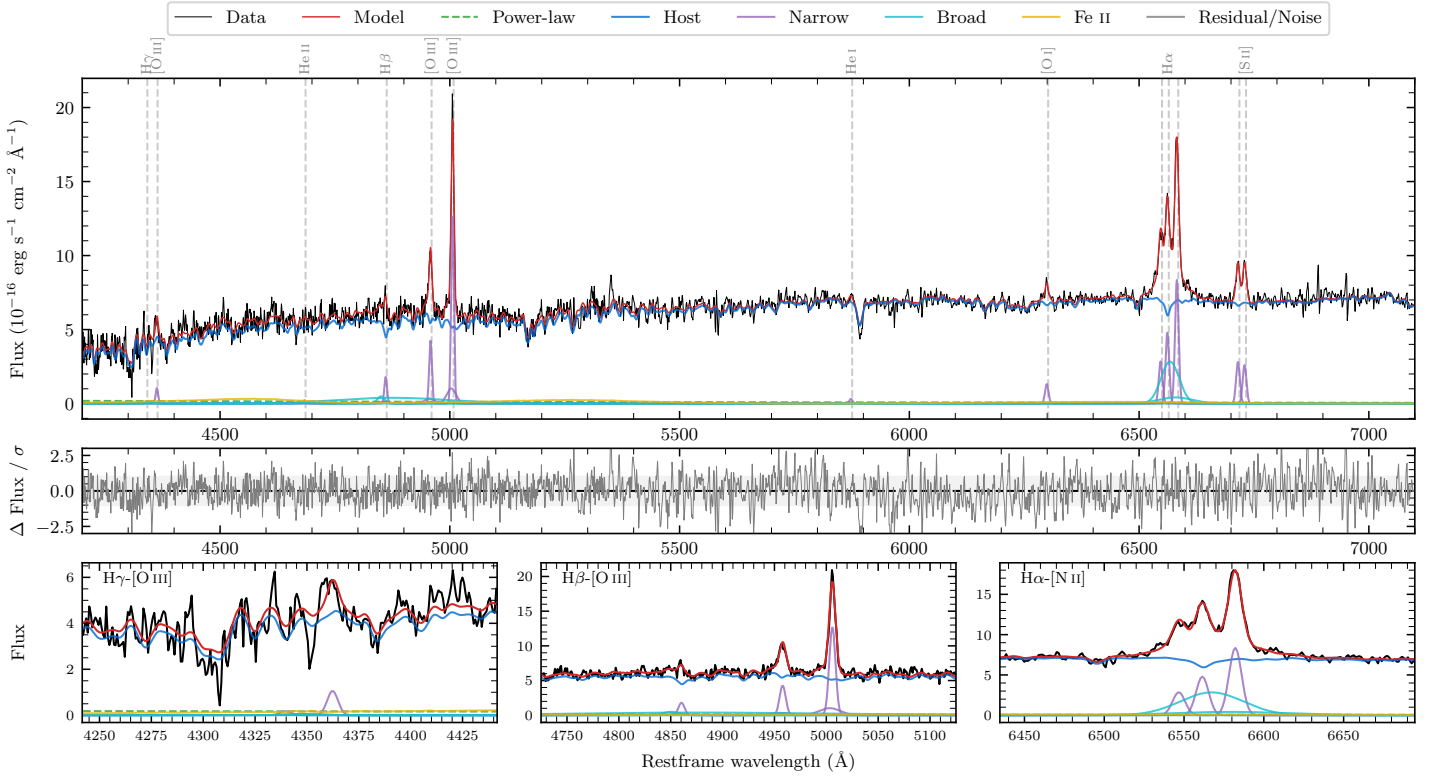
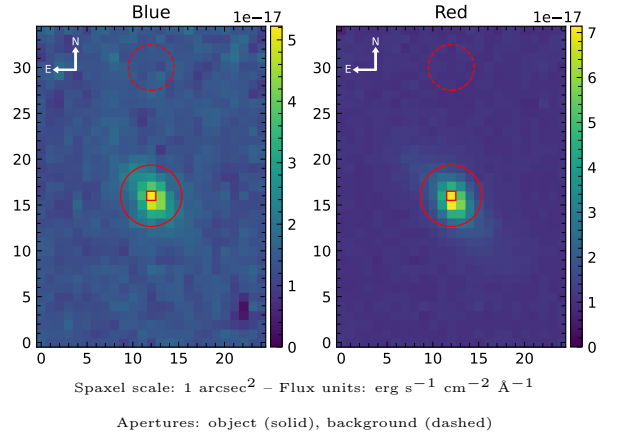


NVSS J223024-073310

Spectrum ID	7008632_sp1	Spectrum Type	Sy 1.8+
Alt name	g2230248-073303	Quality Flag	good
z	0.0558	AGN reference	6dFGS
RA, Dec	337.6033, -7.5510	MW $E(B - V)$	0.043
MJD	60910.55	Power law α_ν	0.45 ± 0.07
SNR/ \AA B/R	10.7/24.2	$\log L_{5100, \text{AGN}}$	41.64 ± 0.39
Obs Airmass	1.14	$\log H\beta_{\text{Br}}/[\text{O III}]$	< -0.71
SMSS ID	7008632	$\log M_{L5100}/M_\odot$	—
Closest SMSS	None $< 15''$	$\log M_{\text{H}\alpha}/M_\odot$	6.70 ± 0.05
SMSS Mean r_{psf}	16.4 ± 0.0	$\log M_{\text{H}\beta}/M_\odot$	—
2MASS K_{ext}	12.5 ± 0.1	$\log M_{[\text{O III}]} / M_\odot$	—



Emission Line Measurements

Line	$\log L$ (erg s $^{-1}$)	FWHM (km s $^{-1}$)	σ (km s $^{-1}$)	EW (Å)
H γ Narrow	—	—	—	—
Hγ Broad	—	—	—	—
[O III] 4364	39.74 ± 0.16	423 ± 62	179 ± 25	43.51 ± 9.85
He II Narrow	39.11 ± 0.43	423 ± 62	179 ± 25	12.01 ± 10.14
He II Broad	—	—	—	—
H β Narrow	40.12 ± 0.08	447 ± 63	325 ± 33	136.61 ± 19.38
Hβ Broad	< 40.25	—	—	—
[O III] 5007	40.99 ± 0.02	447 ± 63	325 ± 33	1069.35 ± 21.65
He I Narrow	39.35 ± 0.23	423 ± 62	179 ± 25	36.54 ± 10.64
He I Broad	—	—	—	—
[O I] 6300	40.00 ± 0.05	423 ± 62	179 ± 25	192.90 ± 12.47
H α Narrow	40.58 ± 0.02	423 ± 62	179 ± 25	804.69 ± 17.72
Hα Broad	41.16 ± 0.02	2260 ± 77	889 ± 47	3062.66 ± 48.48
[N II] 6585	40.82 ± 0.01	423 ± 62	179 ± 25	1419.09 ± 18.62
[S II] 6718	40.35 ± 0.02	423 ± 62	179 ± 25	511.32 ± 15.95
[S II] 6732	40.32 ± 0.02	423 ± 62	179 ± 25	478.49 ± 15.82

Emission Summary

H α Broad SNR	6.07
H β Broad SNR	0.92
H γ Broad SNR	0.00
AGN frac	0.02
Host frac	0.98
$\log L_{5100, \text{Host}}$	43.32
Fe II/H β	—
Fe II/[O III]	—

Quality Flags

spurious_hab/hbb	0/1
15100	2
balmer	2
balmer_snr	2
hb_width	2
balmer_width	2