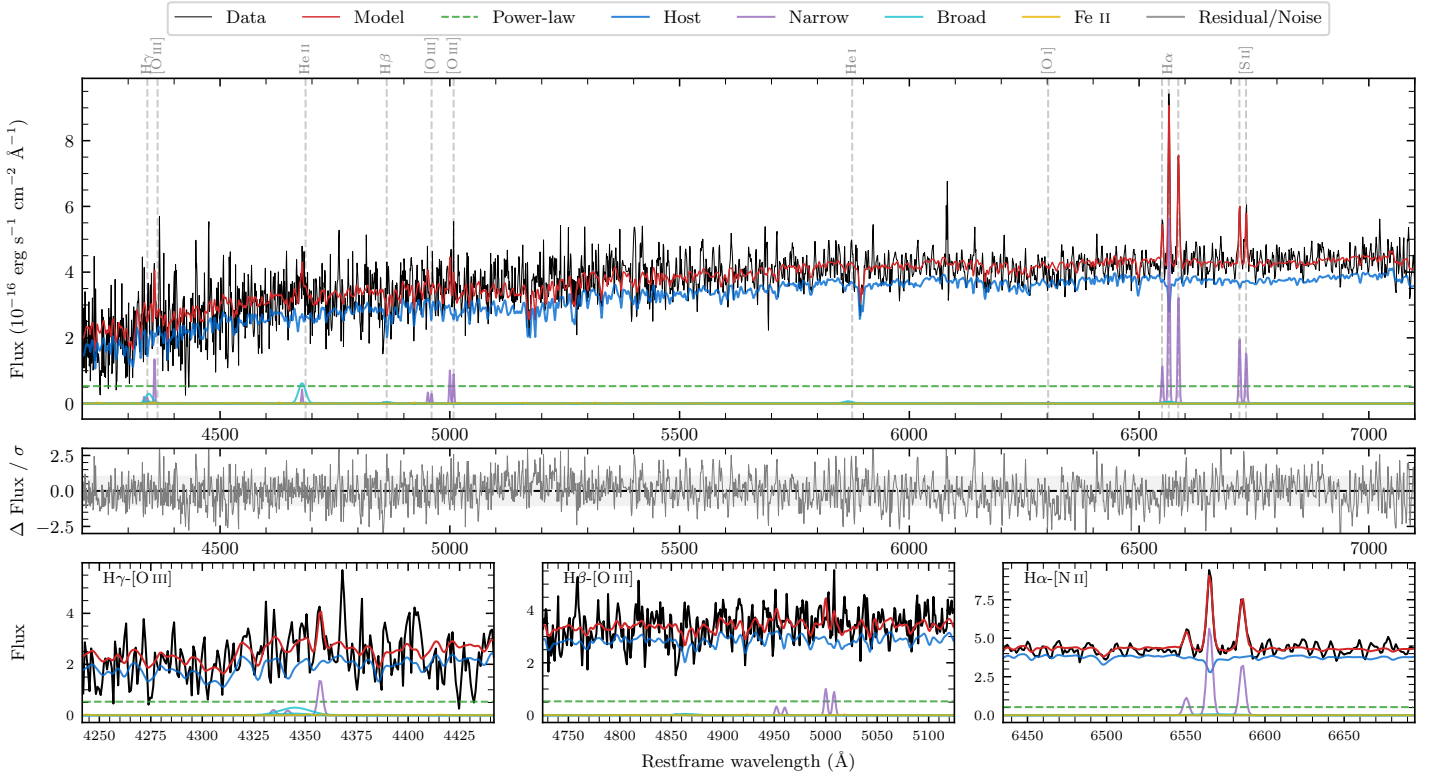
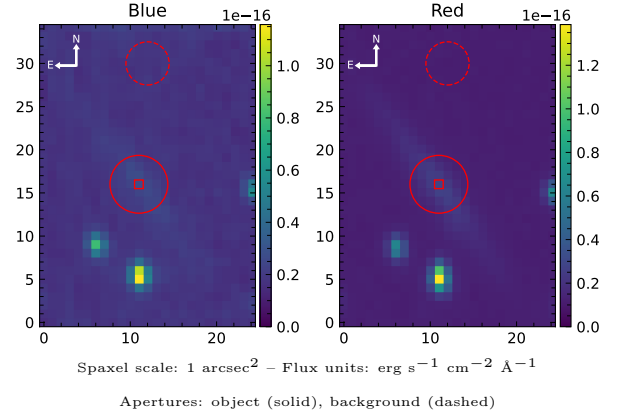


# LEDA 690889

Spectrum ID	119894635_sp1	Spectrum Type	SF
Alt name	g1609040-322944	Quality Flag	good
$z$	0.0361	AGN reference	6dFGS
RA, Dec	242.2665, -32.4954	MW $E(B - V)$	0.195
MJD	60899.41	Power law $\alpha_\nu$	$-1.99 \pm 0.01$
SNR/ $\text{\AA}$ B/R	5.4/12.6	$\log L_{5100, \text{AGN}}$	$41.91 \pm 0.11$
Obs Airmass	1.03	$\log H\beta_{\text{Br}}/[\text{O III}]$	—
SMSS ID	119894635	$\log M_{L5100}/M_\odot$	—
Closest SMSS	8.55", 119894637	$\log M_{\text{H}\alpha}/M_\odot$	—
SMSS Mean $r_{\text{psf}}$	$17.0 \pm 0.2$	$\log M_{\text{H}\beta}/M_\odot$	—
2MASS $K_{\text{ext}}$	$12.7 \pm 0.1$	$\log M_{[\text{O III}]} / M_\odot$	—



## Emission Line Measurements

Line	$\log L$ (erg s <sup>-1</sup> )	FWHM (km s <sup>-1</sup> )	$\sigma$ (km s <sup>-1</sup> )	EW (Å)
H $\gamma$ Narrow	—	—	—	—
<b>H<math>\gamma</math> Broad</b>	—	—	—	—
[O III] 4364	$39.12 \pm 0.11$	$204 \pm 62$	$82 \pm 25$	$8.26 \pm 2.42$
He II Narrow	—	—	—	—
He II Broad	$39.59 \pm 0.16$	$1199 \pm 62$	$509 \pm 25$	$24.14 \pm 5.74$
H $\beta$ Narrow	—	—	—	—
<b>H<math>\beta</math> Broad</b>	—	—	—	—
[O III] 5007	$39.31 \pm 0.09$	—	$255 \pm 25$	$12.81 \pm 2.43$
He I Narrow	—	—	—	—
He I Broad	$38.79 \pm 0.49$	$1316 \pm 62$	$558 \pm 25$	$3.84 \pm 3.23$
[O I] 6300	—	—	—	—
H $\alpha$ Narrow	$39.91 \pm 0.02$	$204 \pm 62$	$82 \pm 25$	$50.69 \pm 1.34$
<b>H<math>\alpha</math> Broad</b>	—	—	—	—
[N II] 6585	$39.68 \pm 0.03$	$204 \pm 62$	$82 \pm 25$	$29.80 \pm 1.41$
[S II] 6718	$39.46 \pm 0.05$	$204 \pm 62$	$82 \pm 25$	$18.15 \pm 1.31$
[S II] 6732	$39.36 \pm 0.06$	$204 \pm 62$	$82 \pm 25$	$14.40 \pm 1.34$

## Emission Summary

H $\alpha$ Broad SNR	0.25
H $\beta$ Broad SNR	0.00
H $\gamma$ Broad SNR	0.00
AGN frac	0.16
Host frac	0.84
$\log L_{5100, \text{Host}}$	42.62
Fe II/H $\beta$	—
Fe II/[O III]	—

## Quality Flags

spurious_hab/hbb	0/0
15100	2
balmer	2
balmer_snr	2
hb_width	2
balmer_width	2