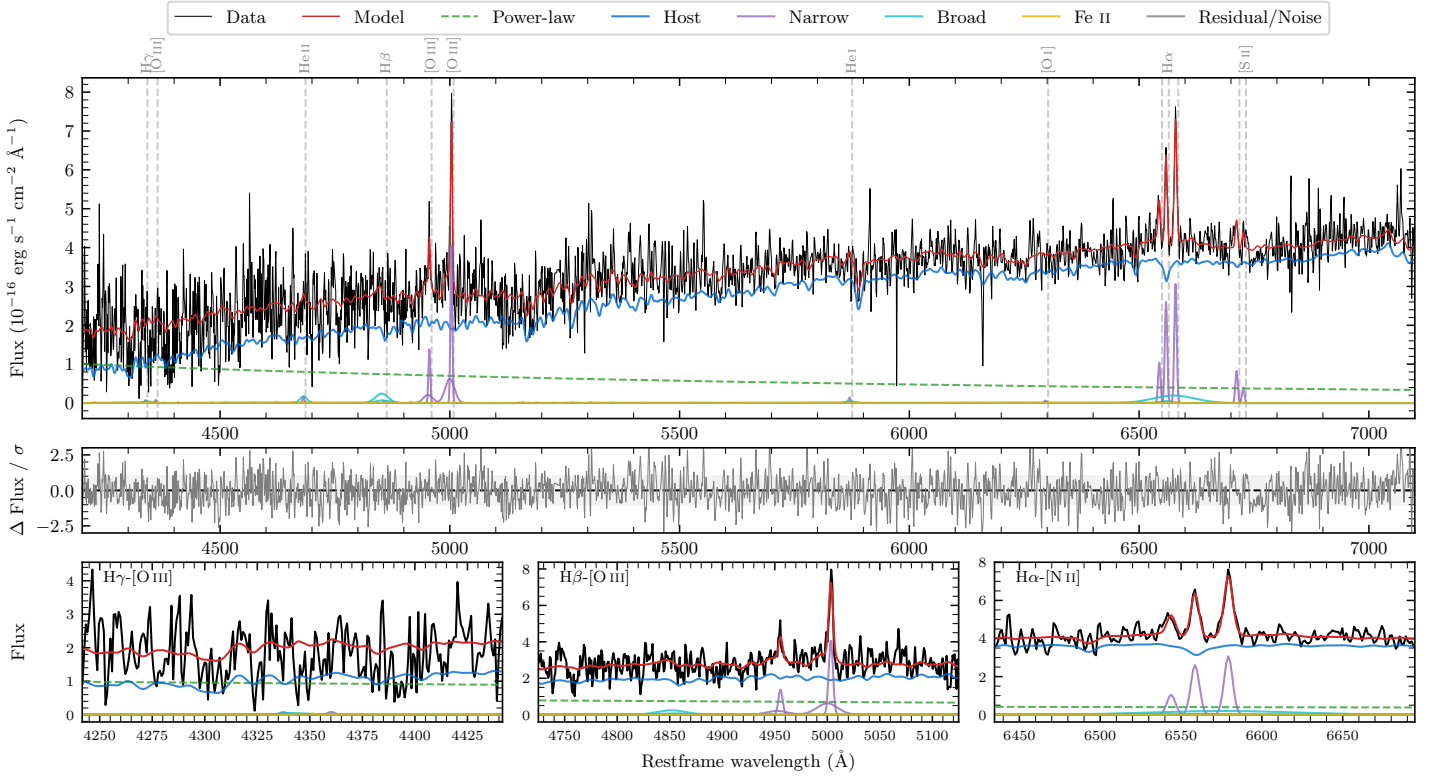
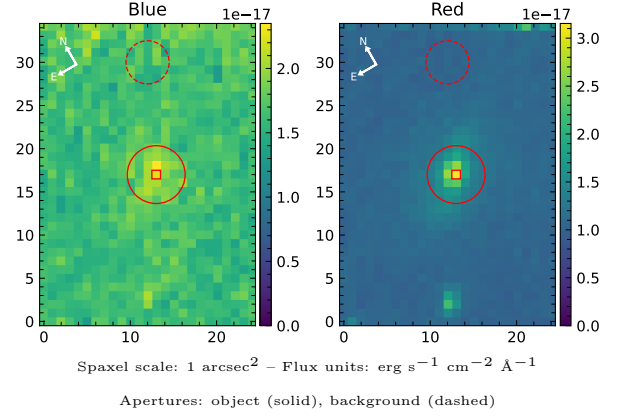


# 6dFGS gJ053048.2-044044

Spectrum ID	26891882_sp1	Spectrum Type	SF
Alt name	g0530482-044044	Quality Flag	good
$z$	0.0648	AGN reference	6dFGS
RA, Dec	82.7008, -4.6790	MW $E(B - V)$	0.245
MJD	60997.7	Power law $\alpha_\nu$	$0.08 \pm 0.09$
SNR/ $\text{\AA}$ B/R	4.4/11.4	$\log L_{5100, \text{AGN}}$	$42.55 \pm 0.06$
Obs Airmass	1.17	$\log H\beta_{\text{Br}}/[\text{O III}]$	—
SMSS ID	26891882	$\log M_{L5100}/M_\odot$	—
Closest SMSS	14.70", 26891876	$\log M_{\text{H}\alpha}/M_\odot$	—
SMSS Mean $r_{\text{psf}}$	$17.7 \pm 0.2$	$\log M_{\text{H}\beta}/M_\odot$	—
2MASS $K_{\text{ext}}$	$12.7 \pm 0.1$	$\log M_{[\text{O III}]} / M_\odot$	—



## Emission Line Measurements

Line	$\log L$ (erg s $^{-1}$ )	FWHM (km s $^{-1}$ )	$\sigma$ (km s $^{-1}$ )	EW (Angstrom)
H $\gamma$ Narrow	—	—	—	—
<b>H<math>\gamma</math> Broad</b>	—	—	—	—
[O III] 4364	—	—	—	—
He II Narrow	—	—	—	—
He II Broad	$39.57 \pm 0.39$	$1181 \pm 62$	$501 \pm 25$	$4.43 \pm 3.74$
H $\beta$ Narrow	—	—	—	—
<b>H<math>\beta</math> Broad</b>	—	—	—	—
[O III] 5007	$40.61 \pm 0.05$	$317 \pm 63$	$417 \pm 45$	$55.51 \pm 4.33$
He I Narrow	—	—	—	—
He I Broad	—	—	—	—
[O I] 6300	—	—	—	—
H $\alpha$ Narrow	$40.28 \pm 0.04$	$283 \pm 62$	$119 \pm 25$	$45.64 \pm 2.41$
<b>H<math>\alpha</math> Broad</b>	—	—	—	—
[N II] 6585	$40.35 \pm 0.03$	$283 \pm 62$	$119 \pm 25$	$54.27 \pm 2.37$
[S II] 6718	$39.79 \pm 0.09$	$283 \pm 62$	$119 \pm 25$	$15.65 \pm 2.40$
[S II] 6732	$39.48 \pm 0.18$	$283 \pm 62$	$119 \pm 25$	$7.61 \pm 2.37$

## Emission Summary

H $\alpha$ Broad SNR	0.41
H $\beta$ Broad SNR	0.00
H $\gamma$ Broad SNR	0.00
AGN frac	0.24
Host frac	0.76
$\log L_{5100, \text{Host}}$	43.05
Fe II/H $\beta$	—
Fe II/[O III]	—

## Quality Flags

spurious_hab/hbb	0/0
15100	1
balmer	2
balmer_snr	2
hb_width	2
balmer_width	2