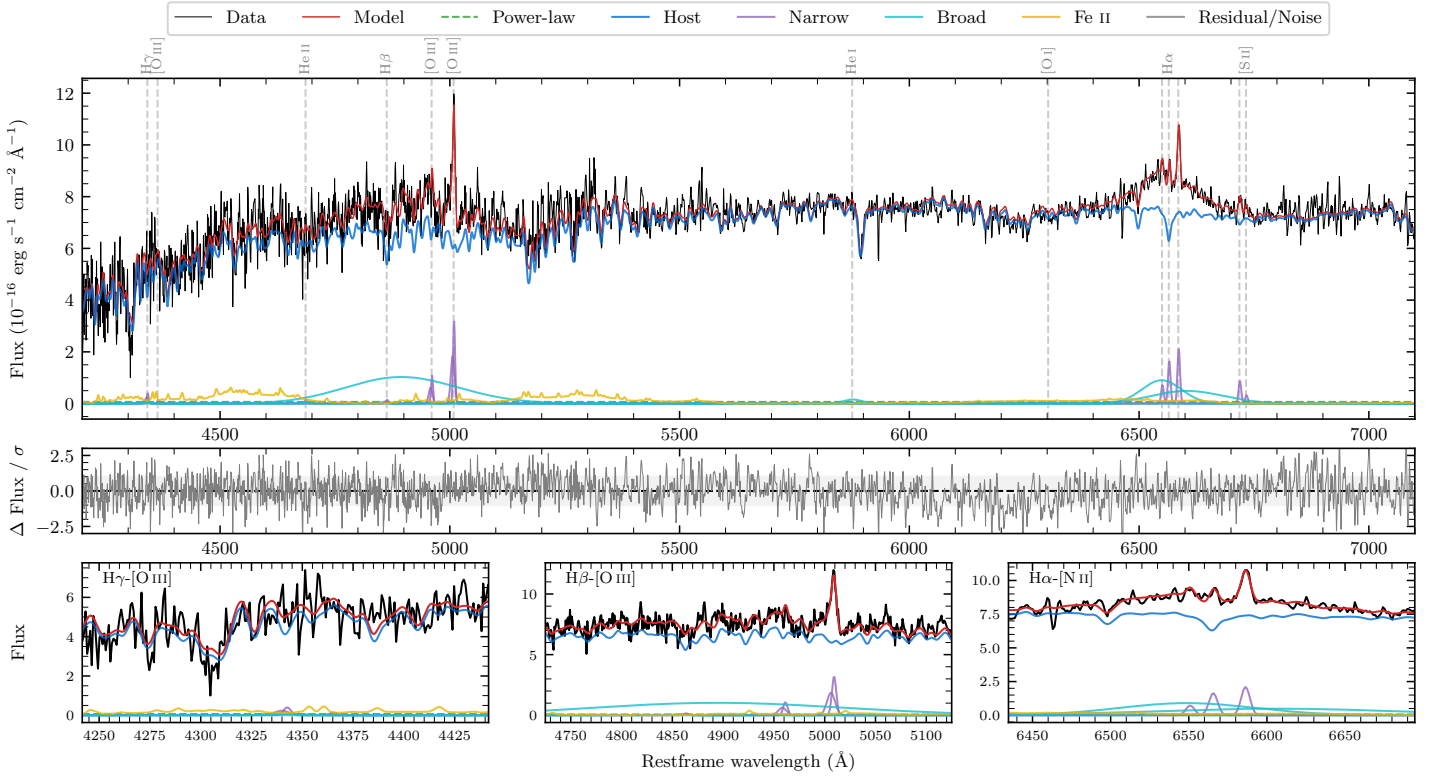
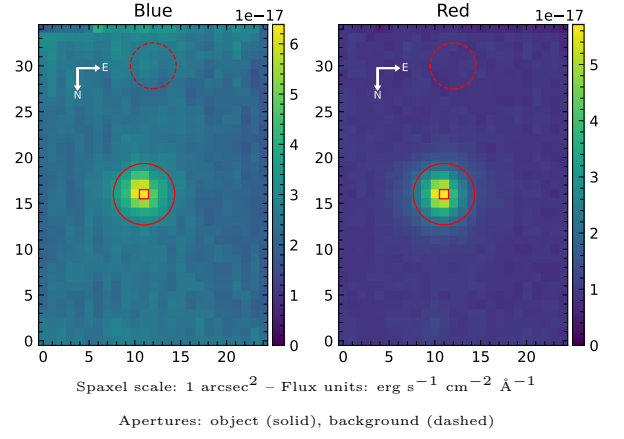


[VV2006] J045850.6-190604

Spectrum ID	22956317_sp1	Spectrum Type	Sy 1.5+
Alt name	J045850.6-190604	Quality Flag	good
z	0.0627	AGN reference	6dFGS
RA, Dec	74.7108, -19.1012	MW $E(B - V)$	0.037
MJD	60950.75	Power law α_ν	-1.96 ± 0.04
SNR/ \AA B/R	11.3/25.5	$\log L_{5100, \text{AGN}}$	41.50 ± 0.56
Obs Airmass	1.03	$\log H\beta_{\text{Br}}/[\text{O III}]$	< 0.04
SMSS ID	22956317	$\log M_{L5100}/M_\odot$	—
Closest SMSS	None $< 15''$	$\log M_{\text{H}\alpha}/M_\odot$	7.61 ± 0.05
SMSS Mean r_{psf}	16.2 ± 0.1	$\log M_{\text{H}\beta}/M_\odot$	—
2MASS K_{ext}	12.7 ± 0.1	$\log M_{[\text{O III}]} / M_\odot$	—



Emission Line Measurements

Line	$\log L$ (erg s ⁻¹)	FWHM (km s ⁻¹)	σ (km s ⁻¹)	EW (Å)
H γ Narrow	39.59 ± 0.35	395 ± 71	215 ± 26	62.89 ± 33.78
Hγ Broad	—	—	—	—
[O III] 4364	—	—	—	—
He II Narrow	—	—	—	—
He II Broad	—	—	—	—
H β Narrow	—	—	—	—
Hβ Broad	< 40.57	—	—	—
[O III] 5007	40.55 ± 0.04	395 ± 71	215 ± 26	581.45 ± 30.35
He I Narrow	—	—	—	—
He I Broad	39.92 ± 0.21	2502 ± 62	1062 ± 25	135.26 ± 35.13
[O I] 6300	—	—	—	—
H α Narrow	40.06 ± 0.06	302 ± 62	128 ± 25	188.37 ± 12.42
Hα Broad	41.29 ± 0.02	5875 ± 254	2526 ± 57	3172.13 ± 68.86
[N II] 6585	40.17 ± 0.04	302 ± 62	128 ± 25	242.88 ± 12.41
[S II] 6718	39.80 ± 0.09	302 ± 62	128 ± 25	103.82 ± 13.05
[S II] 6732	39.37 ± 0.22	302 ± 62	128 ± 25	38.55 ± 12.30

Emission Summary

H α Broad SNR	2.25
H β Broad SNR	0.00
H γ Broad SNR	0.00
AGN frac	0.01
Host frac	0.99
$\log L_{5100, \text{Host}}$	43.48
Fe II/H β	—
Fe II/[O III]	—

Quality Flags

spurious_hab/hbb	0/2
15100	2
balmer	2
balmer_snr	2
hb_width	2
balmer_width	2