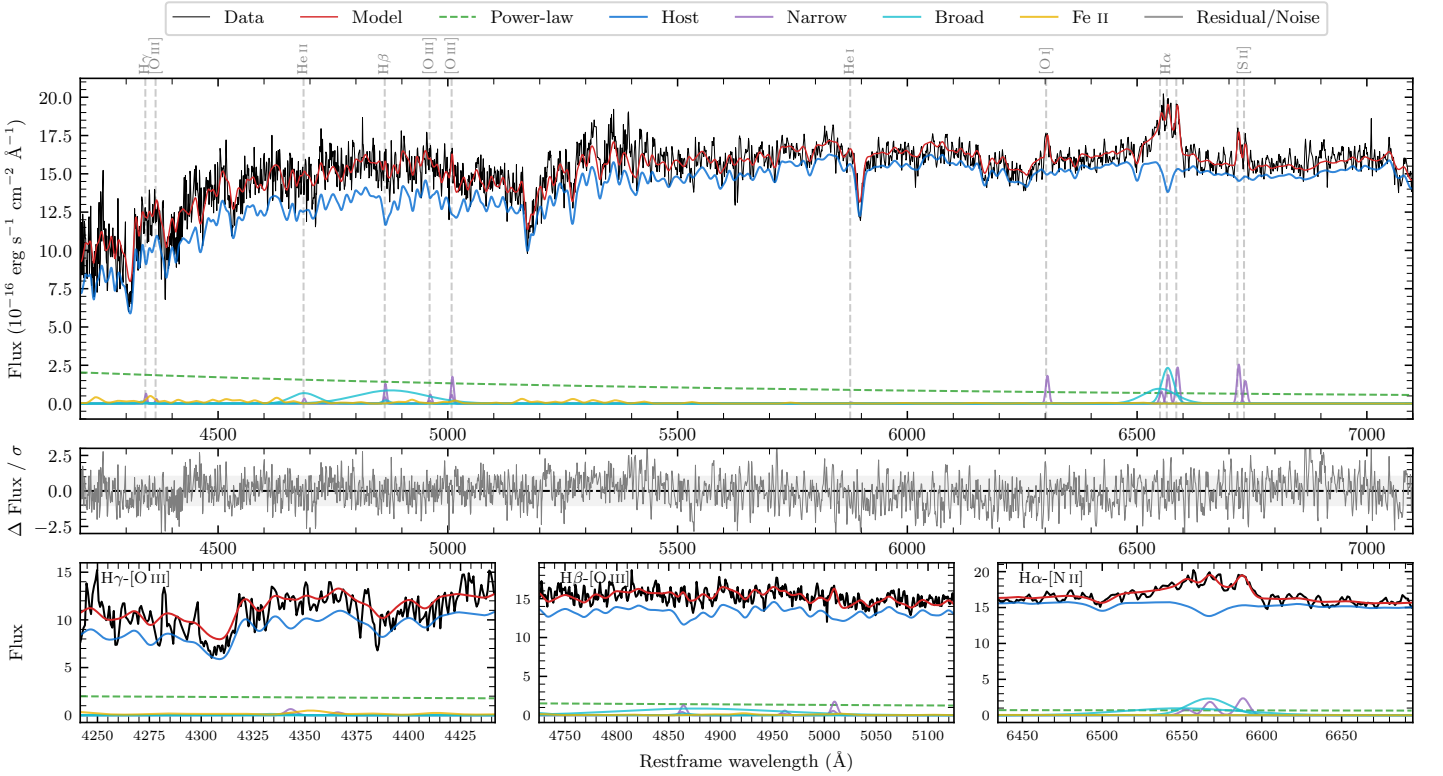
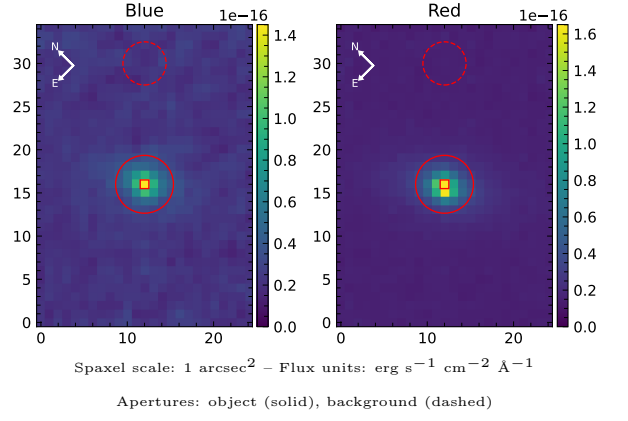


# 2MASX J00274641-1015462

Spectrum ID	12910272_sp1	Spectrum Type	Sy 1.0
Alt name	g0027464-101547	Quality Flag	good
$z$	0.0476	AGN reference	6dFGS
RA, Dec	6.9433, -10.2630	MW $E(B-V)$	0.033
MJD	60931.6	Power law $\alpha_\nu$	$0.45 \pm 0.05$
SNR/ $\text{\AA}$ B/R	15.6/32.0	$\log L_{5100, \text{AGN}}$	$42.53 \pm 0.04$
Obs Airmass	1.08	$\log H\beta_{\text{Br}}/[\text{O III}]$	$0.98 \pm 0.11$
SMSS ID	12910272	$\log M_{L5100}/M_\odot$	$8.20 \pm 0.15$
Closest SMSS	7.97", 2024072032	$\log M_{\text{H}\alpha}/M_\odot$	$6.34 \pm 0.07$
SMSS Mean $r_{\text{psf}}$	$15.4 \pm 0.1$	$\log M_{\text{H}\beta}/M_\odot$	$8.29 \pm 0.16$
2MASS $K_{\text{ext}}$	$11.9 \pm 0.1$	$\log M_{[\text{O III}]} / M_\odot$	$7.94 \pm 0.17$



## Emission Line Measurements

Line	$\log L$ (erg s $^{-1}$ )	FWHM (km s $^{-1}$ )	$\sigma$ (km s $^{-1}$ )	EW ( $\text{\AA}$ )
H $\gamma$ Narrow	$39.50 \pm 0.32$	$414 \pm 63$	$175 \pm 25$	$3.00 \pm 1.57$
<b>H<math>\gamma</math> Broad</b>	—	—	—	—
[O III] 4364	—	—	—	—
He II Narrow	—	—	—	—
He II Broad	$40.44 \pm 0.14$	$4336 \pm 62$	$1841 \pm 25$	$33.27 \pm 5.32$
H $\beta$ Narrow	$39.86 \pm 0.15$	$414 \pm 63$	$175 \pm 25$	$8.80 \pm 1.73$
<b>H<math>\beta</math> Broad</b>	<b><math>40.98 \pm 0.06</math></b>	<b><math>9152 \pm 1573</math></b>	<b><math>3947 \pm 49</math></b>	<b><math>124.34 \pm 9.16</math></b>
[O III] 5007	$39.99 \pm 0.09$	$414 \pm 63$	$175 \pm 25$	$13.36 \pm 1.88$
He I Narrow	—	—	—	—
He I Broad	—	—	—	—
[O I] 6300	$39.96 \pm 0.07$	$409 \pm 62$	$172 \pm 25$	$22.94 \pm 1.92$
H $\alpha$ Narrow	$39.99 \pm 0.11$	$409 \pm 62$	$172 \pm 25$	$27.21 \pm 2.75$
<b>H<math>\alpha</math> Broad</b>	<b><math>40.96 \pm 0.03</math></b>	<b><math>1711 \pm 109</math></b>	<b><math>955 \pm 42</math></b>	<b><math>249.33 \pm 7.40</math></b>
[N II] 6585	$40.10 \pm 0.06$	$409 \pm 62$	$172 \pm 25$	$34.99 \pm 3.22$
[S II] 6718	$40.14 \pm 0.04$	$409 \pm 62$	$172 \pm 25$	$40.29 \pm 2.37$
[S II] 6732	$39.90 \pm 0.08$	$409 \pm 62$	$172 \pm 25$	$23.46 \pm 2.38$

## Emission Summary

H $\alpha$ Broad SNR	3.47
H $\beta$ Broad SNR	1.19
H $\gamma$ Broad SNR	0.00
AGN frac	0.09
Host frac	0.91
$\log L_{5100, \text{Host}}$	43.55
Fe II/H $\beta$	0.35
Fe II/[O III]	3.46

## Quality Flags

spurious_hab/hbb	0/0
15100	2
balmer	2
balmer_snr	2
hb_width	0
balmer_width	1