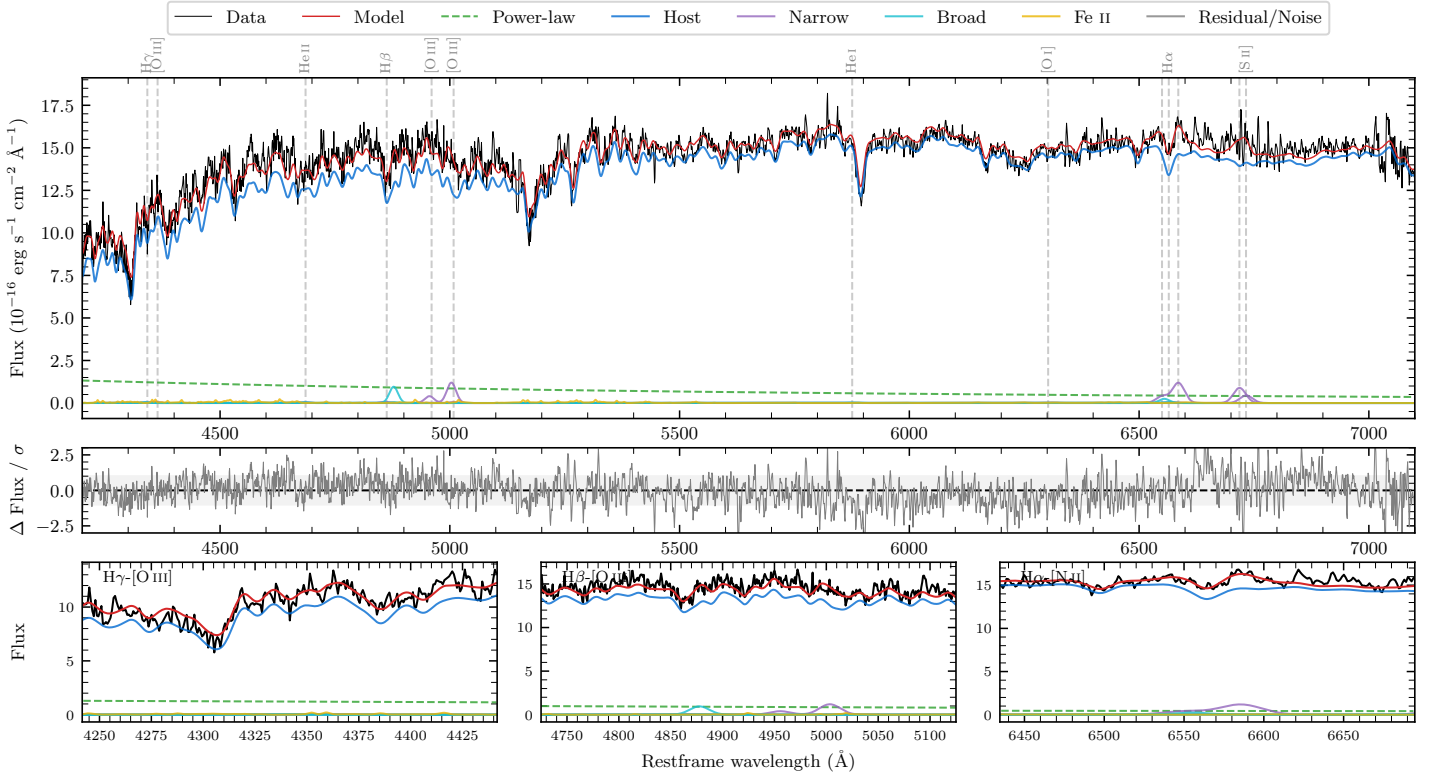
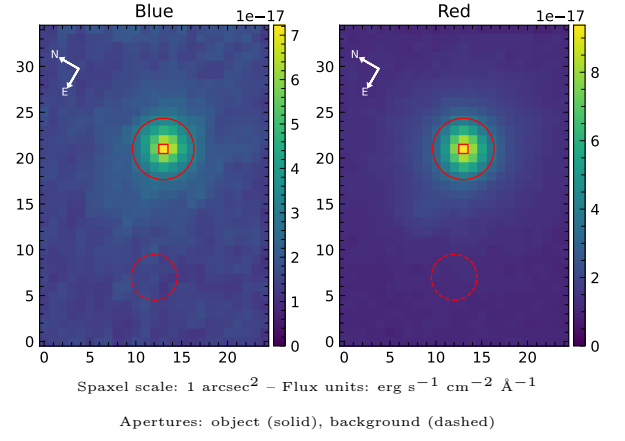


PKS J2231–0824

Spectrum ID	6994026_sp1	Spectrum type	Non-ELG
Alt name	MRC 2229–086	Quality flag	good
z	0.0830	AGN reference	PGC
RA, Dec	337.9300, –8.4089	MW $E(B - V)$	0.047
MJD	60911.54	Power law α_ν	0.50 ± 0.01
SNR/ \AA B/R	19.0/33.9	$\log L_{5100, \text{AGN}}$	42.85 ± 0.05
Obs airmass	1.17	$\log H\beta_{\text{Br}}/[\text{O III}]$	–
SMSS ID	6994026	$\log M_{L5100}/M_\odot$	–
Neighbour	None $< 15''$	$\log M_{\text{H}\alpha}/M_\odot$	–
SMSS $\langle r_6''_{\text{ap}} \rangle$	15.76 ± 0.03	$\log M_{\text{H}\beta}/M_\odot$	–
2MASS K_{ext}	11.14 ± 0.06	$\log M_{[\text{O III}]} / M_\odot$	–



Emission Line Measurements

Line	$\log L$ (erg s $^{-1}$)	FWHM (km s $^{-1}$)	σ (km s $^{-1}$)	EW (Å)
H γ Narrow	–	–	–	–
Hγ Broad	–	–	–	–
[O III] 4364	–	–	–	–
He II Narrow	–	–	–	–
He II Broad	–	–	–	–
H β Narrow	–	–	–	–
Hβ Broad	–	–	–	–
[O III] 5007	40.77 ± 0.06	1421 ± 63	603 ± 25	40.12 ± 4.62
He I Narrow	–	–	–	–
He I Broad	–	–	–	–
[O I] 6300	–	–	–	–
H α Narrow	–	–	–	–
Hα Broad	–	–	–	–
[N II] 6585	40.86 ± 0.05	1413 ± 62	600 ± 25	98.47 ± 6.07
[S II] 6718	40.74 ± 0.09	1413 ± 62	600 ± 25	79.34 ± 7.47
[S II] 6732	40.45 ± 0.16	1413 ± 62	600 ± 25	40.47 ± 7.54

Emission Summary

H α broad SNR	0.47
H β broad SNR	0.00
H γ broad SNR	0.00
AGN frac	0.06
Host frac	0.94
$\log L_{5100, \text{Host}}$	44.05
Fe II/H β	–
Fe II/[O III]	0.70

Quality Flags

spurious_hab/hbb	0/0
15100	2
balmer	2
balmer_snr	2
hb_width	2
balmer_width	2