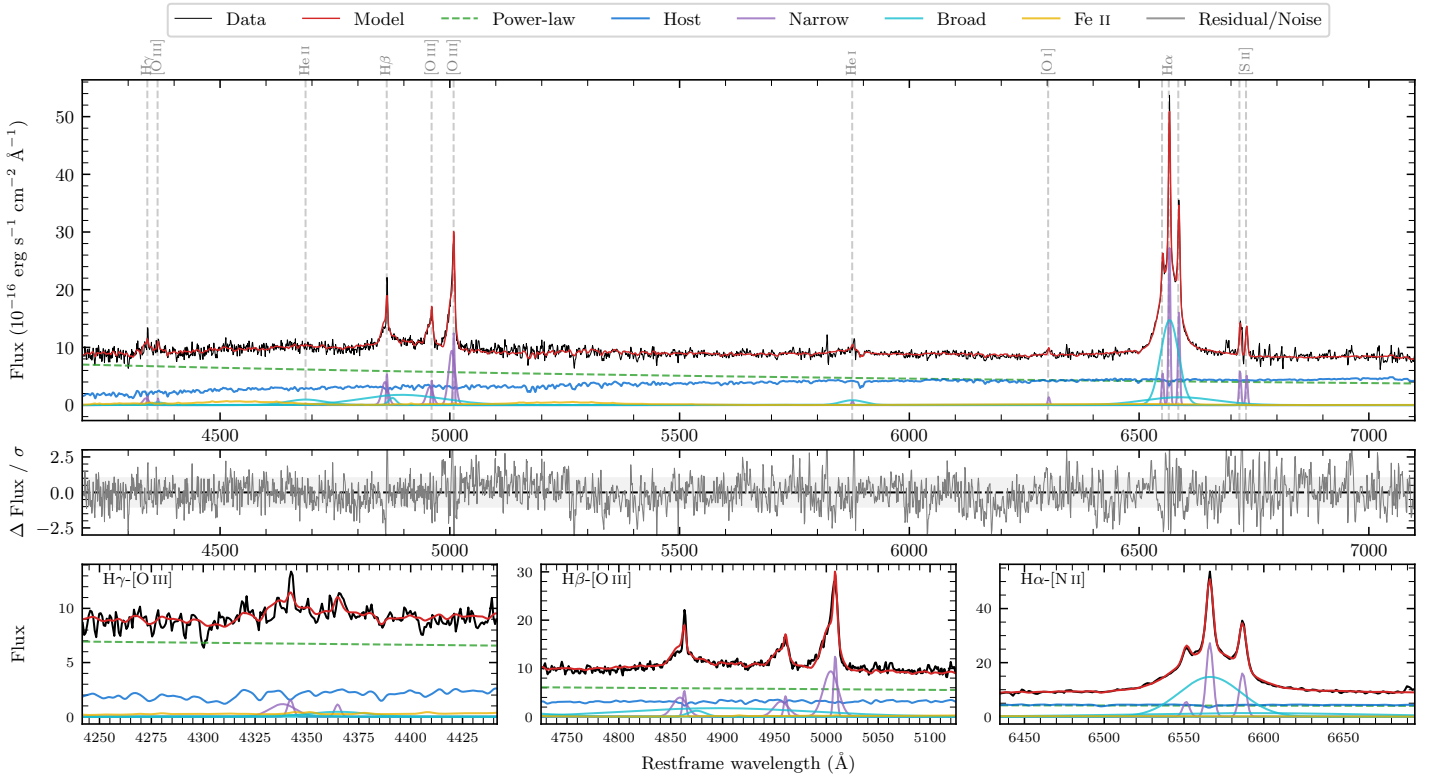
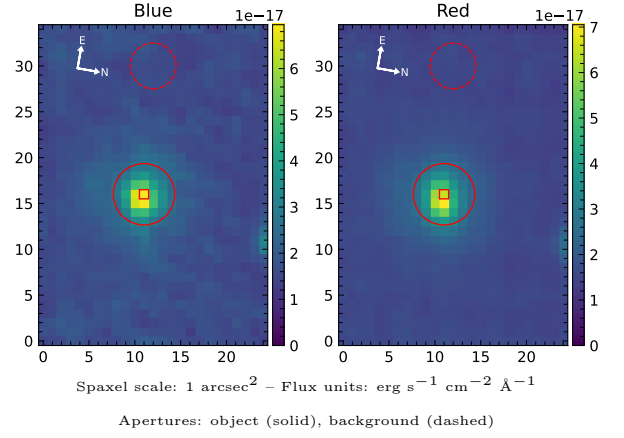


LEDA 192028

Spectrum ID	6929341_sp1	Spectrum type	Sy 1.8
Alt name	g2222466-081944	Quality flag	good
z	0.0824	AGN reference	6dFGS
RA, Dec	335.6943, -8.3289	MW $E(B - V)$	0.049
MJD	60093.8	Power law α_ν	-0.80 ± 0.17
SNR/ \AA B/R	15.4/22.2	$\log L_{5100, \text{AGN}}$	43.68 ± 0.02
Obs airmass	1.11	$\log H\beta_{\text{Br}}/[\text{O III}]$	-0.92 ± 0.64
SMSS ID	6929341	$\log M_{L5100}/M_\odot$	6.94 ± 0.03
Neighbour	None $< 15''$	$\log M_{\text{H}\alpha}/M_\odot$	7.35 ± 0.03
SMSS $\langle r_6''_{\text{ap}} \rangle$	16.39 ± 0.04	$\log M_{\text{H}\beta}/M_\odot$	6.42 ± 0.31
2MASS K_{ext}	12.38 ± 0.10	$\log M_{[\text{O III}]} / M_\odot$	6.98 ± 0.03



Emission Line Measurements

Line	$\log L$ (erg s^{-1})	FWHM (km s^{-1})	σ (km s^{-1})	EW (\AA)
H γ Narrow	40.64 ± 0.09	377 ± 67	398 ± 26	3.83 ± 0.45
Hγ Broad	—	—	—	—
[O III] 4364	39.87 ± 0.23	233 ± 63	98 ± 25	0.65 ± 0.20
He II Narrow	—	—	—	—
He II Broad	—	—	—	—
H β Narrow	41.22 ± 0.02	377 ± 67	398 ± 26	16.73 ± 0.47
Hβ Broad	$40.69^{+1.20}_{-0.08}$	1222 ± 43	345 ± 25	4.84 ± 0.50
[O III] 5007	41.61 ± 0.01	377 ± 67	398 ± 26	42.20 ± 0.53
He I Narrow	39.82 ± 0.20	233 ± 63	98 ± 25	0.84 ± 0.23
He I Broad	40.99 ± 0.05	3034 ± 80	1288 ± 33	12.36 ± 0.76
[O I] 6300	40.10 ± 0.08	233 ± 63	98 ± 25	1.75 ± 0.21
H α Narrow	41.42 ± 0.01	233 ± 63	98 ± 25	38.50 ± 0.28
Hα Broad	42.25 ± 0.01	2206 ± 64	1116 ± 26	258.03 ± 1.57
[N II] 6585	41.20 ± 0.01	233 ± 63	98 ± 25	22.97 ± 0.26
[S II] 6718	40.76 ± 0.02	233 ± 63	98 ± 25	8.68 ± 0.36
[S II] 6732	40.71 ± 0.03	233 ± 63	98 ± 25	7.62 ± 0.38

Emission Summary

H α broad SNR	25.44
H β broad SNR	1.97
H γ broad SNR	0.91
AGN frac	0.64
Host frac	0.36
$\log L_{5100, \text{Host}}$	43.42
Fe II/H β	—
Fe II/[O III]	—

Quality Flags

spurious_hab/hbb	0/1
15100	0
balmer	1
balmer_snr	2
hb_width	1
balmer_width	2