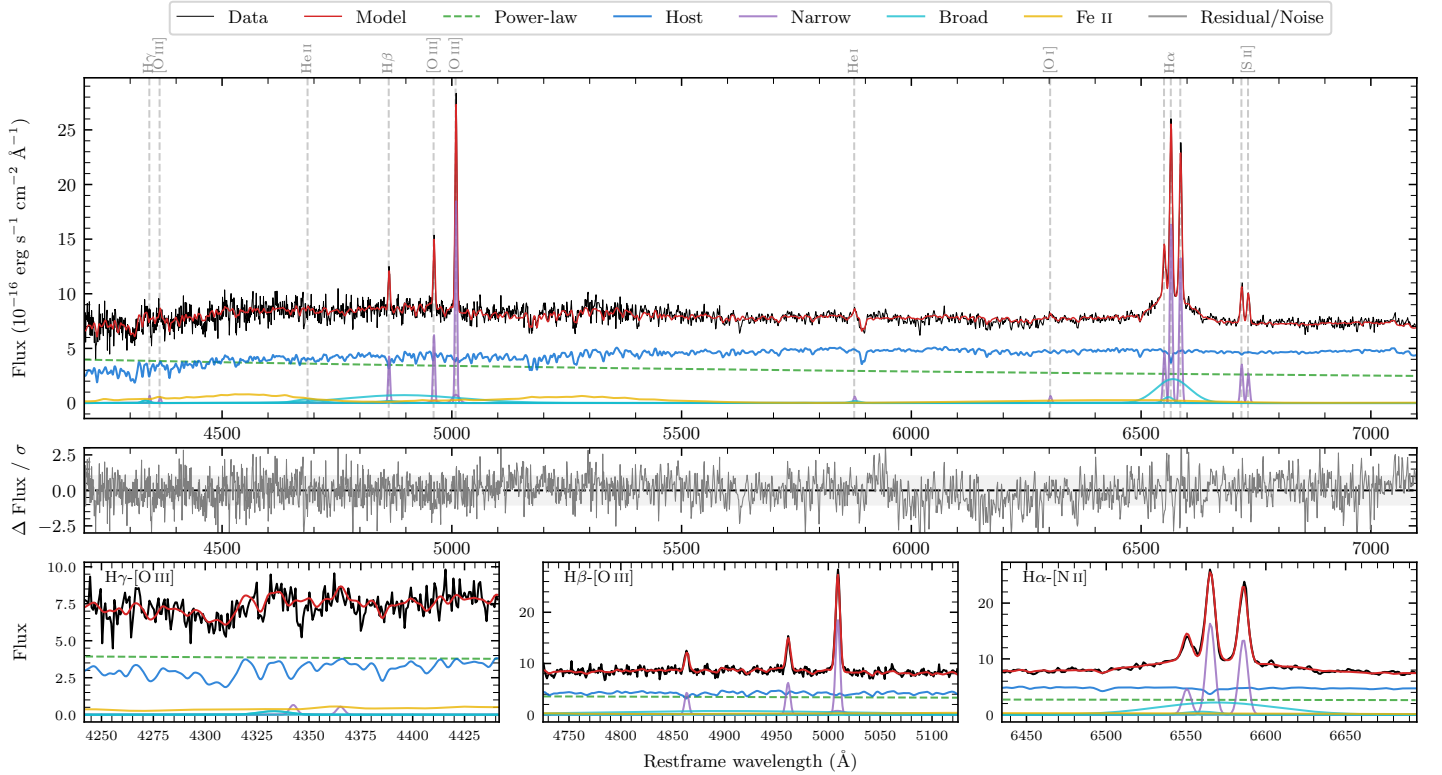
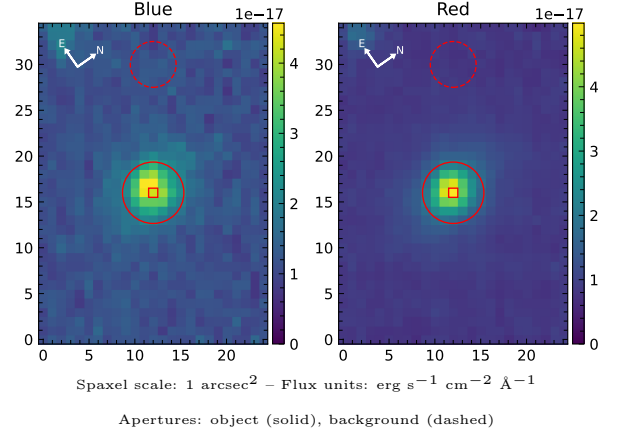


LEDA 85133

Spectrum ID	682083_sp1	Spectrum type	Sy 1.5+
Alt name	g2107209-244011	Quality flag	good
z	0.0483	AGN reference	6dFGS
RA, Dec	316.8369, -24.6696	MW $E(B-V)$	0.056
MJD	60166.54	Power law α_ν	-1.10 ± 0.18
SNR/ \AA B/R	14.4/26.2	$\log L_{5100, \text{AGN}}$	42.97 ± 0.03
Obs airmass	1.03	$\log H\beta_{\text{Br}}/[\text{O III}]$	< -0.44
SMSS ID	682083	$\log M_{L5100}/M_\odot$	—
Neighbour	None $< 15''$	$\log M_{\text{H}\alpha}/M_\odot$	7.00 ± 0.07
SMSS $\langle r_6''_{\text{ap}} \rangle$	16.12 ± 0.04	$\log M_{\text{H}\beta}/M_\odot$	—
2MASS K_{ext}	12.34 ± 0.10	$\log M_{[\text{O III}]} / M_\odot$	—



Emission Line Measurements

Line	$\log L$ (erg s^{-1})	FWHM (km s^{-1})	σ (km s^{-1})	EW (\AA)
H γ Narrow	39.30 ± 0.28	304 ± 63	195 ± 32	0.94 ± 0.69
Hγ Broad	—	—	—	—
[O III] 4364	39.15 ± 0.43	299 ± 62	124 ± 25	0.68 ± 0.51
He II Narrow	—	—	—	—
He II Broad	—	—	—	—
H β Narrow	40.16 ± 0.04	304 ± 63	196 ± 32	7.51 ± 0.64
Hβ Broad	< 40.37	—	—	—
[O III] 5007	40.80 ± 0.02	304 ± 63	196 ± 32	34.27 ± 0.68
He I Narrow	39.32 ± 0.18	299 ± 62	124 ± 25	1.29 ± 0.24
He I Broad	39.42 ± 0.28	1178 ± 62	500 ± 25	1.64 ± 0.49
[O I] 6300	39.39 ± 0.12	299 ± 62	124 ± 25	1.61 ± 0.25
H α Narrow	40.81 ± 0.01	299 ± 62	124 ± 25	44.16 ± 0.39
Hα Broad	41.09 ± 0.01	3345 ± 219	1384 ± 26	84.89 ± 1.16
[N II] 6585	40.73 ± 0.01	299 ± 62	124 ± 25	36.63 ± 0.35
[S II] 6718	40.15 ± 0.02	299 ± 62	124 ± 25	9.95 ± 0.30
[S II] 6732	40.04 ± 0.03	299 ± 62	124 ± 25	7.69 ± 0.34

Emission Summary

H α broad SNR	4.80
H β broad SNR	0.35
H γ broad SNR	0.00
AGN frac	0.46
Host frac	0.54
$\log L_{5100, \text{Host}}$	43.04
Fe II/H β	—
Fe II/[O III]	—

Quality Flags

spurious_hab/hbb	0/1
15100	1
balmer	2
balmer_snr	2
hb_width	2
balmer_width	2