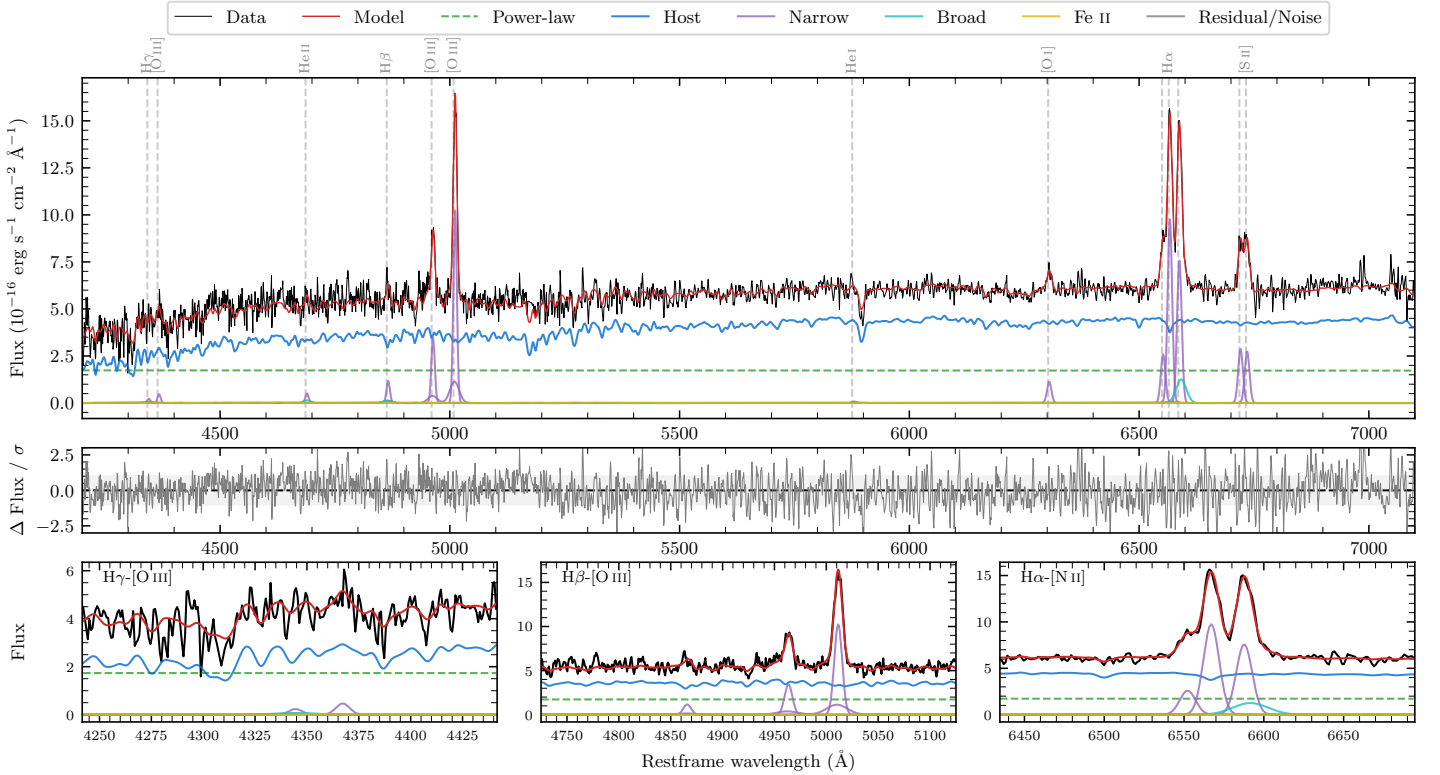
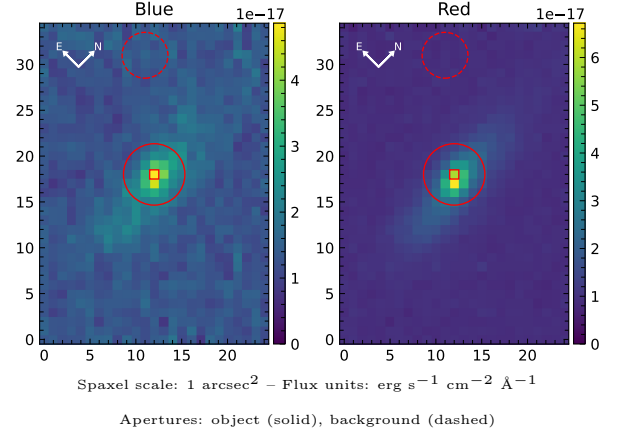


LEDA 907618

Spectrum ID	6720011_sp1	Spectrum type	Sy 2
Alt name	PGC 907618	Quality flag	good
z	0.0784	AGN reference	PGC
RA, Dec	356.1704, -15.7019	MW $E(B - V)$	0.023
MJD	60932.55	Power law α_ν	-1.98 ± 0.01
SNR/ \AA B/R	9.7/21.6	$\log L_{5100, \text{AGN}}$	43.12 ± 0.03
Obs airmass	1.08	$\log H\beta_{\text{Br}}/[\text{O III}]$	—
SMSS ID	6720011	$\log M_{L5100}/M_\odot$	—
Neighbour	6.4", 2011612525	$\log M_{\text{H}\alpha}/M_\odot$	—
SMSS $\langle r_{6'' \text{ap}} \rangle$	16.71 ± 0.05	$\log M_{\text{H}\beta}/M_\odot$	—
2MASS K_{ext}	12.01 ± 0.07	$\log M_{[\text{O III}]} / M_\odot$	—



Emission Line Measurements

Line	$\log L$ (erg s $^{-1}$)	FWHM (km s $^{-1}$)	σ (km s $^{-1}$)	EW (Å)
H γ Narrow	—	—	—	—
Hγ Broad	—	—	—	—
[O III] 4364	39.79 ± 0.29	534 ± 62	226 ± 25	2.40 ± 1.10
He II Narrow	39.87 ± 0.29	534 ± 62	226 ± 25	2.83 ± 0.98
He II Broad	39.66 ± 0.51	1193 ± 62	506 ± 25	1.77 ± 1.37
H β Narrow	40.35 ± 0.13	568 ± 63	350 ± 32	8.69 ± 1.50
Hβ Broad	—	—	—	—
[O III] 5007	41.31 ± 0.02	568 ± 63	350 ± 32	78.32 ± 1.70
He I Narrow	—	—	—	—
He I Broad	—	—	—	—
[O I] 6300	40.34 ± 0.05	534 ± 62	226 ± 25	8.46 ± 0.55
H α Narrow	41.35 ± 0.01	534 ± 62	226 ± 25	75.75 ± 0.67
Hα Broad	—	—	—	—
[N II] 6585	41.24 ± 0.01	534 ± 62	226 ± 25	59.08 ± 0.66
[S II] 6718	40.77 ± 0.03	534 ± 62	226 ± 25	22.89 ± 0.72
[S II] 6732	40.75 ± 0.02	534 ± 62	226 ± 25	21.83 ± 0.79

Emission Summary

H α broad SNR	0.00
H β broad SNR	0.00
H γ broad SNR	0.00
AGN frac	0.33
Host frac	0.67
$\log L_{5100, \text{Host}}$	43.43
Fe II/H β	—
Fe II/[O III]	—

Quality Flags

spurious_hab/hbb	1/0
15100	1
balmer	2
balmer_snr	2
hb_width	2
balmer_width	2