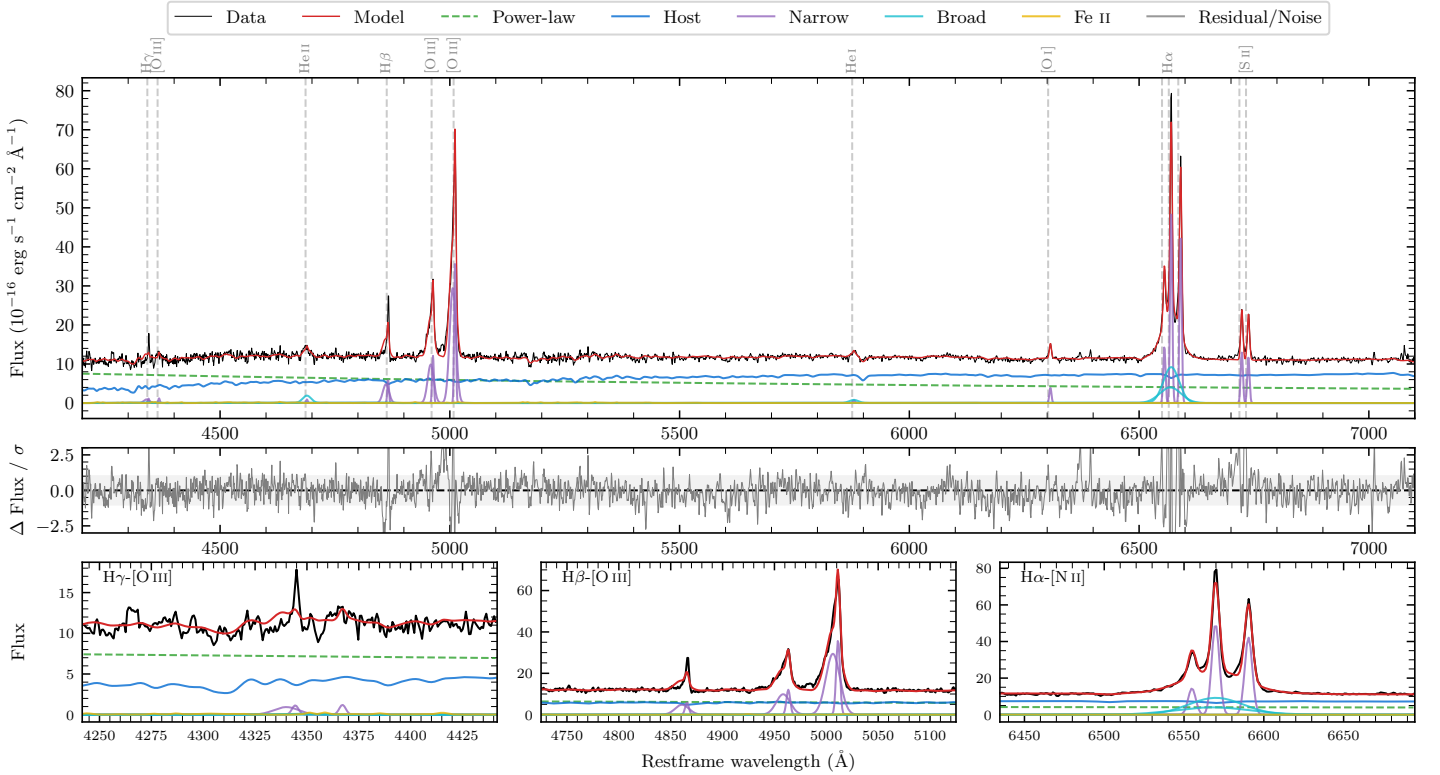
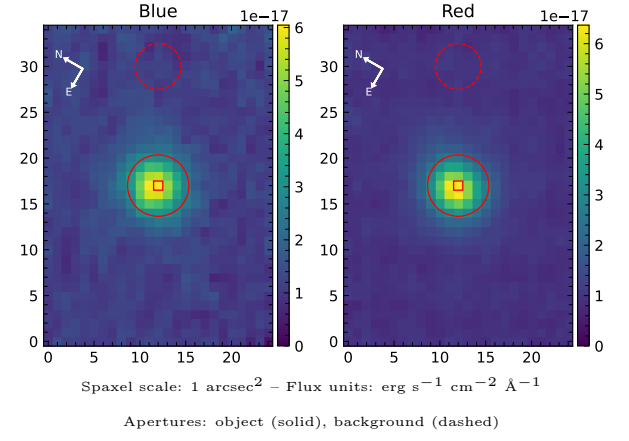


LEDA 3977245

Spectrum ID	6526612_sp1	Spectrum type	Sy 1.8+
Alt name	g2311562-182459	Quality flag	good
z	0.0741	AGN reference	6dFGS
RA, Dec	347.9841, -18.4163	MW $E(B - V)$	0.028
MJD	60178.6	Power law α_ν	-0.62 ± 0.29
SNR/ \AA B/R	12.9/21.0	$\log L_{5100, \text{AGN}}$	43.60 ± 0.04
Obs airmass	1.05	$\log H\beta_{\text{Br}}/[\text{O III}]$	< -1.26
SMSS ID	6526612	$\log M_{L5100}/M_\odot$	—
Neighbour	12.6", 1009792696	$\log M_{\text{H}\alpha}/M_\odot$	7.09 ± 0.03
SMSS $\langle r_{6''}^{\text{ap}} \rangle$	15.69 ± 0.01	$\log M_{\text{H}\beta}/M_\odot$	—
2MASS K_{ext}	11.51 ± 0.03	$\log M_{[\text{O III}]} / M_\odot$	—



Emission Line Measurements

Line	$\log L$ (erg s^{-1})	FWHM (km s^{-1})	σ (km s^{-1})	EW (\AA)
H γ Narrow	40.43 ± 0.17	508 ± 78	380 ± 25	2.75 ± 0.57
Hγ Broad	—	—	—	—
[O III] 4364	39.85 ± 0.27	258 ± 62	109 ± 25	0.72 ± 0.29
He II Narrow	39.77 ± 0.34	258 ± 62	109 ± 25	0.66 ± 0.29
He II Broad	40.81 ± 0.08	1396 ± 66	593 ± 27	7.36 ± 0.69
H β Narrow	41.19 ± 0.03	508 ± 78	380 ± 25	18.49 ± 0.62
Hβ Broad	< 40.73	—	—	—
[O III] 5007	41.99 ± 0.01	508 ± 78	380 ± 25	121.33 ± 0.78
He I Narrow	39.76 ± 0.26	258 ± 62	109 ± 25	0.90 ± 0.27
He I Broad	40.46 ± 0.12	1179 ± 62	500 ± 25	4.52 ± 0.61
[O I] 6300	40.52 ± 0.04	258 ± 62	109 ± 25	5.66 ± 0.30
H α Narrow	41.64 ± 0.01	258 ± 62	109 ± 25	78.53 ± 0.47
Hα Broad	41.96 ± 0.01	2017 ± 70	774 ± 25	166.28 ± 1.14
[N II] 6585	41.57 ± 0.01	258 ± 62	109 ± 25	67.27 ± 0.44
[S II] 6718	41.06 ± 0.01	258 ± 62	109 ± 25	21.63 ± 0.39
[S II] 6732	41.03 ± 0.02	258 ± 62	109 ± 25	20.01 ± 0.50

Emission Summary

H α broad SNR	14.30
H β broad SNR	0.00
H γ broad SNR	0.00
AGN frac	0.49
Host frac	0.51
$\log L_{5100, \text{Host}}$	43.62
Fe II/H β	—
Fe II/[O III]	0.05

Quality Flags

spurious_hab/hbb	0/0
15100	1
balmer	2
balmer_snr	2
hb_width	2
balmer_width	2