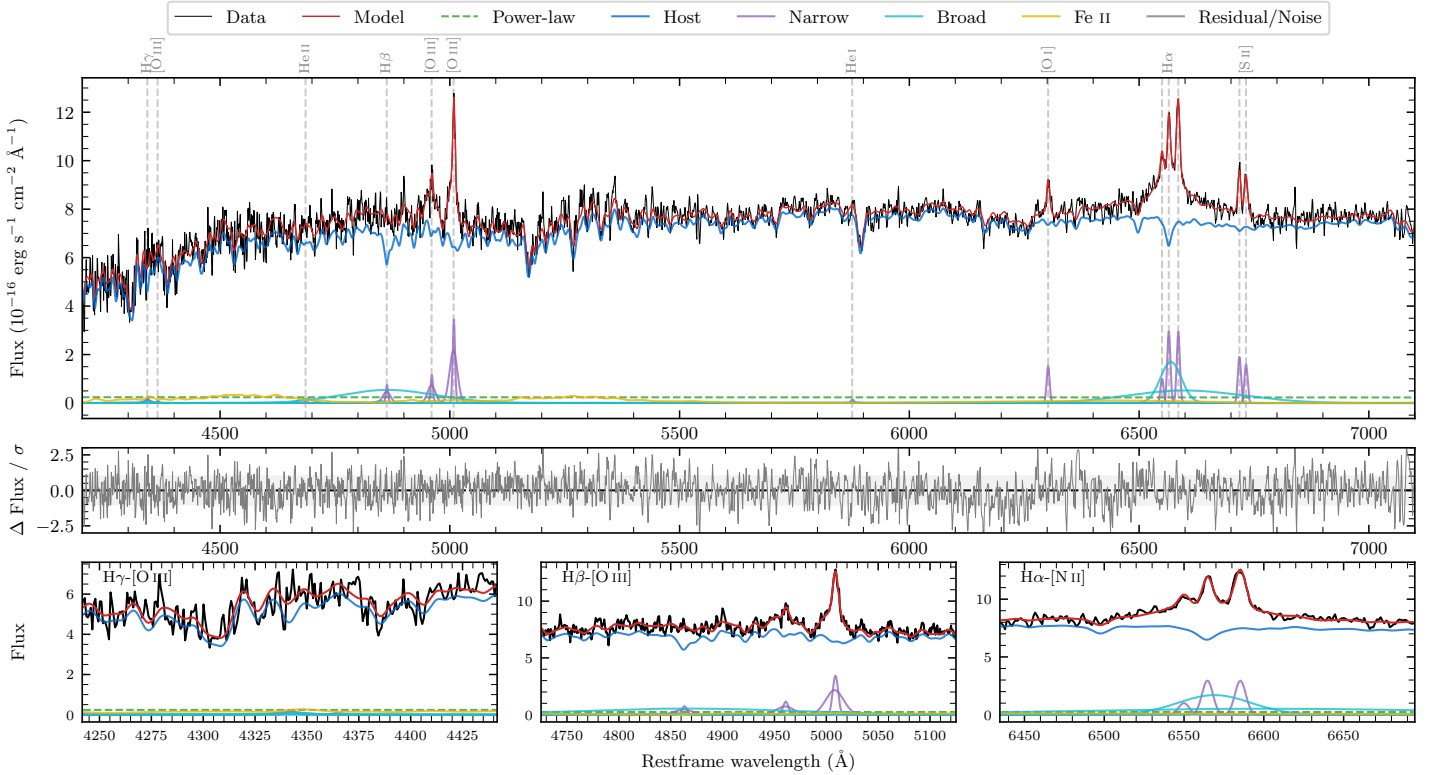
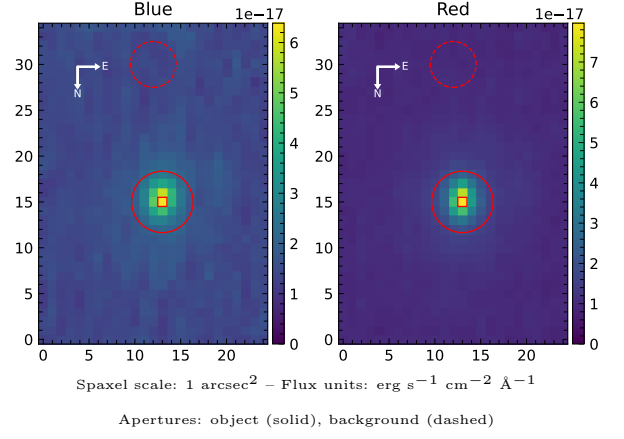


# LEDA 838526

Spectrum ID	6443647_sp1	Spectrum type	Sy 1.2
Alt name	g2338130-204006	Quality flag	good
$z$	0.0639	AGN reference	6dFGS
RA, Dec	354.5542, -20.6684	MW $E(B - V)$	0.024
MJD	60165.69	Power law $\alpha_\nu$	$-1.92 \pm 0.09$
SNR/ $\text{\AA}$ B/R	16.2/30.3	$\log L_{5100, \text{AGN}}$	$42.08 \pm 0.26$
Obs airmass	1.02	$\log H\beta_{\text{Br}}/[\text{O III}]$	$0.32 \pm 0.05$
SMSS ID	6443647	$\log M_{L5100}/M_\odot$	$8.33 \pm 0.15$
Neighbour	None $< 15''$	$\log M_{\text{H}\alpha}/M_\odot$	$7.11 \pm 0.04$
SMSS $\langle r_6'' \text{ap} \rangle$	$16.28 \pm 0.06$	$\log M_{\text{H}\beta}/M_\odot$	$8.71 \pm 0.10$
2MASS $K_{\text{ext}}$	$12.06 \pm 0.10$	$\log M_{[\text{O III}]} / M_\odot$	$8.70 \pm 0.09$



## Emission Line Measurements

Line	$\log L$ (erg s <sup>-1</sup> )	FWHM (km s <sup>-1</sup> )	$\sigma$ (km s <sup>-1</sup> )	EW (Å)
H $\gamma$ Narrow	$39.59 \pm 0.37$	$509 \pm 70$	$430 \pm 28$	$16.42 \pm 9.41$
<b>H<math>\gamma</math> Broad</b>	—	—	—	—
[O III] 4364	—	—	—	—
He II Narrow	—	—	—	—
<b>He II Broad</b>	<b><math>39.88 \pm 0.28</math></b>	<b><math>2340 \pm 63</math></b>	<b><math>993 \pm 25</math></b>	<b><math>32.27 \pm 16.64</math></b>
H $\beta$ Narrow	$40.19 \pm 0.09$	$509 \pm 70$	$430 \pm 28$	$65.00 \pm 8.57$
<b>H<math>\beta</math> Broad</b>	<b><math>41.18 \pm 0.05</math></b>	<b><math>13392 \pm 1355</math></b>	<b><math>5507 \pm 43</math></b>	<b><math>638.55 \pm 34.54</math></b>
[O III] 5007	$40.86 \pm 0.02$	$509 \pm 70$	$431 \pm 28$	$309.03 \pm 8.87$
He I Narrow	$39.10 \pm 0.36$	$364 \pm 63$	$154 \pm 25$	$5.47 \pm 3.12$
<b>He I Broad</b>	—	—	—	—
[O I] 6300	$40.12 \pm 0.04$	$364 \pm 63$	$154 \pm 25$	$57.32 \pm 3.21$
H $\alpha$ Narrow	$40.42 \pm 0.03$	$364 \pm 63$	$154 \pm 25$	$115.81 \pm 3.61$
<b>H<math>\alpha</math> Broad</b>	<b><math>41.43 \pm 0.02</math></b>	<b><math>2978 \pm 93</math></b>	<b><math>3118 \pm 66</math></b>	<b><math>1193.52 \pm 20.48</math></b>
[N II] 6585	$40.42 \pm 0.03$	$364 \pm 63$	$154 \pm 25$	$115.22 \pm 3.50$
[S II] 6718	$40.24 \pm 0.03$	$364 \pm 63$	$154 \pm 25$	$76.02 \pm 3.38$
[S II] 6732	$40.16 \pm 0.04$	$364 \pm 63$	$154 \pm 25$	$64.25 \pm 3.46$

## Emission Summary

H $\alpha$ broad SNR	5.02
H $\beta$ broad SNR	1.45
H $\gamma$ broad SNR	0.39
AGN frac	0.03
Host frac	0.97
$\log L_{5100, \text{Host}}$	43.53
Fe II/H $\beta$	0.58
Fe II/[O III]	1.19

## Quality Flags

spurious_hab/hbb	0/0
15100	2
balmer	1
balmer_snr	2
hb_width	0
balmer_width	1