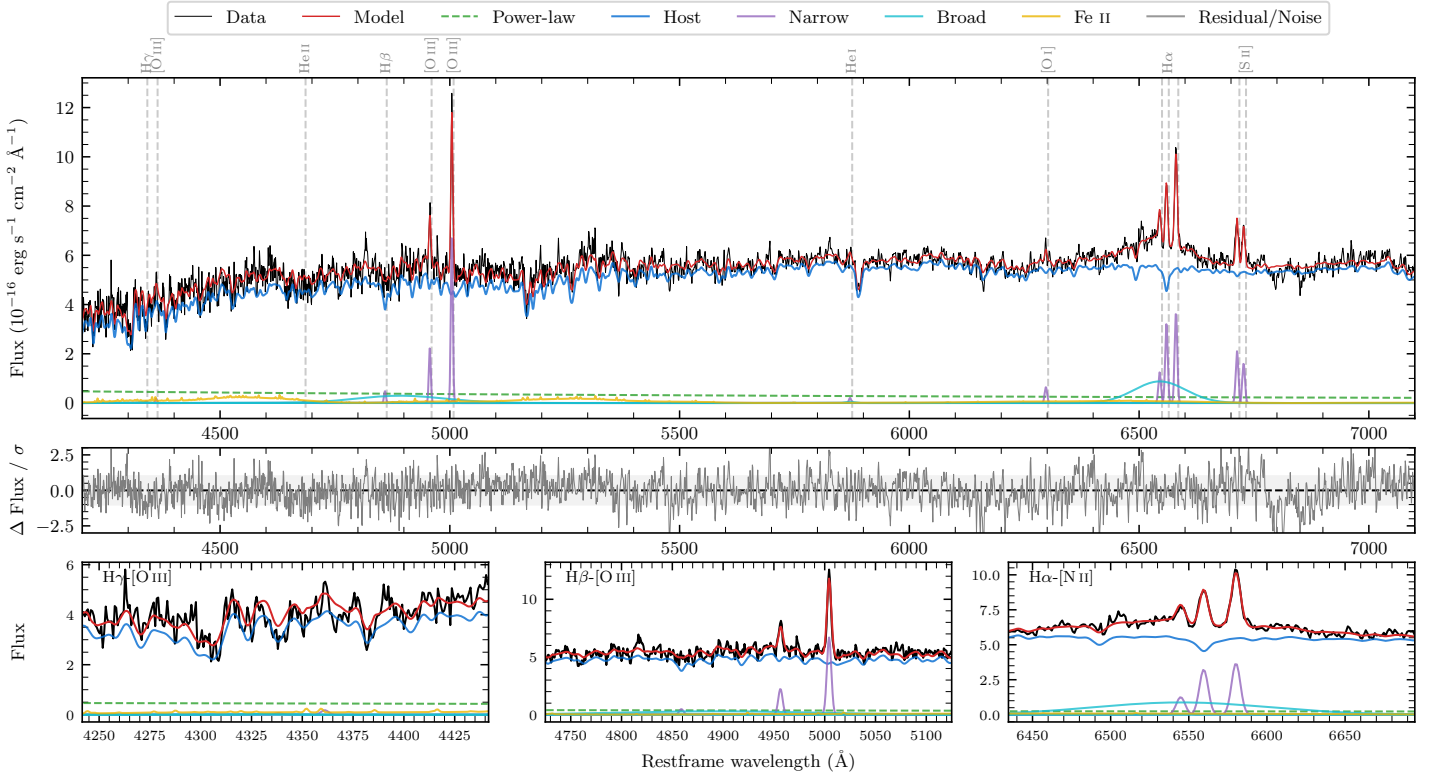
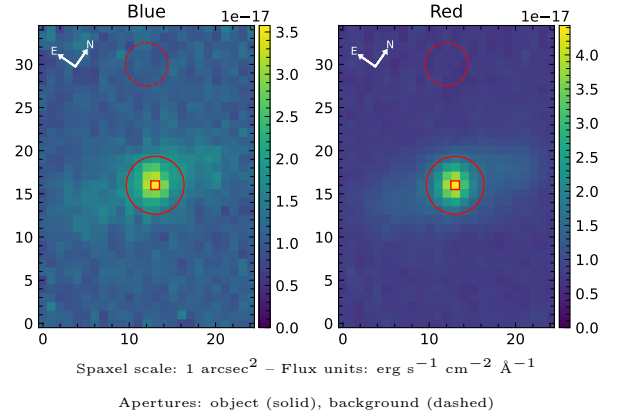


# LEDA 941820

Spectrum ID	5985688_sp1	Spectrum type	Sy 1.5+
Alt name	g2214557-131003	Quality flag	good
$z$	0.0570	AGN reference	6dFGS
RA, Dec	333.7321, -13.1674	MW $E(B - V)$	0.037
MJD	60168.56	Power law $\alpha_\nu$	$-0.46 \pm 0.33$
SNR/ $\text{\AA}$ B/R	12.7/25.7	$\log L_{5100, \text{AGN}}$	$42.15 \pm 0.11$
Obs airmass	1.12	$\log H\beta_{\text{Br}}/[\text{O III}]$	$< 0.14$
SMSS ID	5985688	$\log M_{L5100}/M_\odot$	—
Neighbour	None $< 15''$	$\log M_{\text{H}\alpha}/M_\odot$	$7.46 \pm 0.04$
SMSS $\langle r_6'' \text{ap} \rangle$	$16.57 \pm 0.03$	$\log M_{\text{H}\beta}/M_\odot$	—
2MASS $K_{\text{ext}}$	$12.02 \pm 0.11$	$\log M_{[\text{O III}]} / M_\odot$	—



## Emission Line Measurements

Line	$\log L$ (erg s $^{-1}$ )	FWHM (km s $^{-1}$ )	$\sigma$ (km s $^{-1}$ )	EW (A)
H $\gamma$ Narrow	—	—	—	—
<b>H<math>\gamma</math> Broad</b>	—	—	—	—
[O III] 4364	—	—	—	—
He II Narrow	—	—	—	—
<b>He II Broad</b>	—	—	—	—
H $\beta$ Narrow	$39.35 \pm 0.23$	$306 \pm 63$	$138 \pm 27$	$7.33 \pm 3.07$
<b>H<math>\beta</math> Broad</b>	$< 40.64$	—	—	—
[O III] 5007	$40.50 \pm 0.02$	$306 \pm 63$	$138 \pm 27$	$108.86 \pm 3.55$
He I Narrow	$39.04 \pm 0.31$	$309 \pm 62$	$129 \pm 25$	$4.91 \pm 1.97$
<b>He I Broad</b>	<b><math>39.01 \pm 0.49</math></b>	<b><math>1178 \pm 62</math></b>	<b><math>500 \pm 25</math></b>	<b><math>4.60 \pm 3.85</math></b>
[O I] 6300	$39.56 \pm 0.10$	$309 \pm 62$	$129 \pm 25$	$18.29 \pm 2.26$
H $\alpha$ Narrow	$40.28 \pm 0.02$	$309 \pm 62$	$129 \pm 25$	$101.17 \pm 2.79$
<b>H<math>\alpha</math> Broad</b>	<b><math>41.02 \pm 0.02</math></b>	<b><math>5961 \pm 117</math></b>	<b><math>2215 \pm 25</math></b>	<b><math>553.68 \pm 11.84</math></b>
[N II] 6585	$40.34 \pm 0.02$	$309 \pm 62$	$129 \pm 25$	$116.05 \pm 2.72$
[S II] 6718	$40.10 \pm 0.03$	$309 \pm 62$	$129 \pm 25$	$69.96 \pm 2.96$
[S II] 6732	$39.99 \pm 0.04$	$309 \pm 62$	$129 \pm 25$	$53.88 \pm 2.57$

## Emission Summary

H $\alpha$ broad SNR	2.34
H $\beta$ broad SNR	0.86
H $\gamma$ broad SNR	0.00
AGN frac	0.07
Host frac	0.93
$\log L_{5100, \text{Host}}$	43.28
Fe II/H $\beta$	—
Fe II/[O III]	1.58

## Quality Flags

spurious_hab/hbb	0/0
15100	2
balmer	2
balmer_snr	2
hb_width	2
balmer_width	2