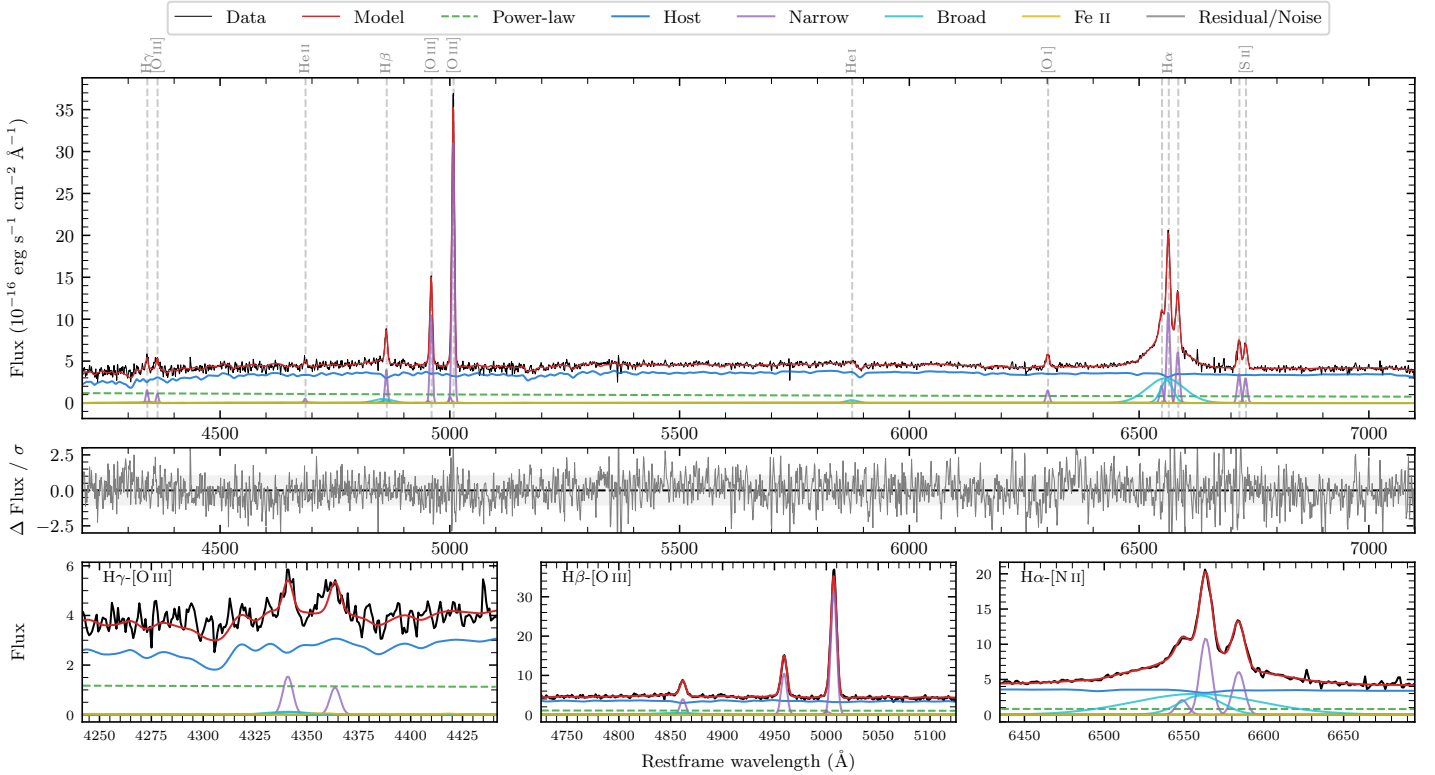
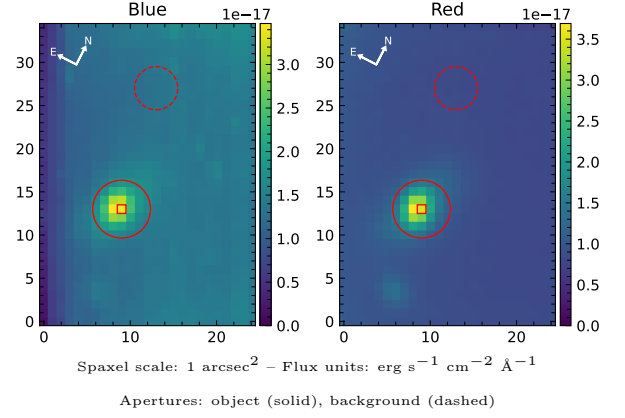


SDSS J220509.50–004820.6

Spectrum ID	5660207_sp1	Spectrum type	Sy 1.8
Alt name	g2205095–004821	Quality flag	good
z	0.0978	AGN reference	6dFGS
RA, Dec	331.2896, –0.8057	MW $E(B - V)$	0.082
MJD	59079.55	Power law α_ν	-1.16 ± 0.12
SNR/Å B/R	13.2/22.2	$\log L_{5100, \text{AGN}}$	43.09 ± 0.04
Obs airmass	1.22	$\log H\beta_{\text{Br}}/[\text{O III}]$	-0.84 ± 0.06
SMSS ID	5660207	$\log M_{L5100}/M_\odot$	7.14 ± 0.24
Neighbour	9.9", 5660206	$\log M_{\text{H}\alpha}/M_\odot$	7.26 ± 0.03
SMSS $\langle r_6''_{\text{ap}} \rangle$	17.26 ± 0.03	$\log M_{\text{H}\beta}/M_\odot$	6.98 ± 0.25
2MASS K_{ext}	13.33 ± 0.12	$\log M_{[\text{O III}]} / M_\odot$	7.52 ± 0.24



Emission Line Measurements

Line	$\log L$ (erg s $^{-1}$)	FWHM (km s $^{-1}$)	σ (km s $^{-1}$)	EW (Å)
H γ Narrow	40.41 ± 0.09	402 ± 62	178 ± 25	9.22 ± 0.96
Hγ Broad	—	—	—	—
[O III] 4364	40.25 ± 0.09	399 ± 62	168 ± 25	6.46 ± 0.87
He II Narrow	39.97 ± 0.19	399 ± 62	168 ± 25	3.60 ± 0.82
He II Broad	39.63 ± 0.48	1186 ± 63	503 ± 25	1.62 ± 1.38
H β Narrow	40.87 ± 0.03	402 ± 62	178 ± 25	28.99 ± 0.99
Hβ Broad	40.94 ± 0.06	2054 ± 518	937 ± 70	33.99 ± 2.45
[O III] 5007	41.78 ± 0.01	402 ± 62	178 ± 25	242.71 ± 1.28
He I Narrow	39.12 ± 0.50	399 ± 62	168 ± 25	0.61 ± 0.58
He I Broad	40.46 ± 0.08	1504 ± 65	638 ± 26	13.33 ± 1.27
[O I] 6300	40.55 ± 0.03	399 ± 62	168 ± 25	17.38 ± 0.74
H α Narrow	41.43 ± 0.01	399 ± 62	168 ± 25	135.47 ± 0.86
Hα Broad	42.01 ± 0.01	2354 ± 86	1286 ± 25	524.79 ± 2.81
[N II] 6585	41.18 ± 0.01	399 ± 62	168 ± 25	76.42 ± 0.99
[S II] 6718	40.94 ± 0.01	399 ± 62	168 ± 25	45.08 ± 0.92
[S II] 6732	40.87 ± 0.02	399 ± 62	168 ± 25	38.67 ± 0.88

Emission Summary

H α broad SNR	17.64
H β broad SNR	2.54
H γ broad SNR	0.91
AGN frac	0.23
Host frac	0.77
$\log L_{5100, \text{Host}}$	43.62
Fe II/H β	—
Fe II/[O III]	—

Quality Flags

spurious_hab/hbb	0/0
15100	1
balmer	1
balmer_snr	2
hb_width	0
balmer_width	2