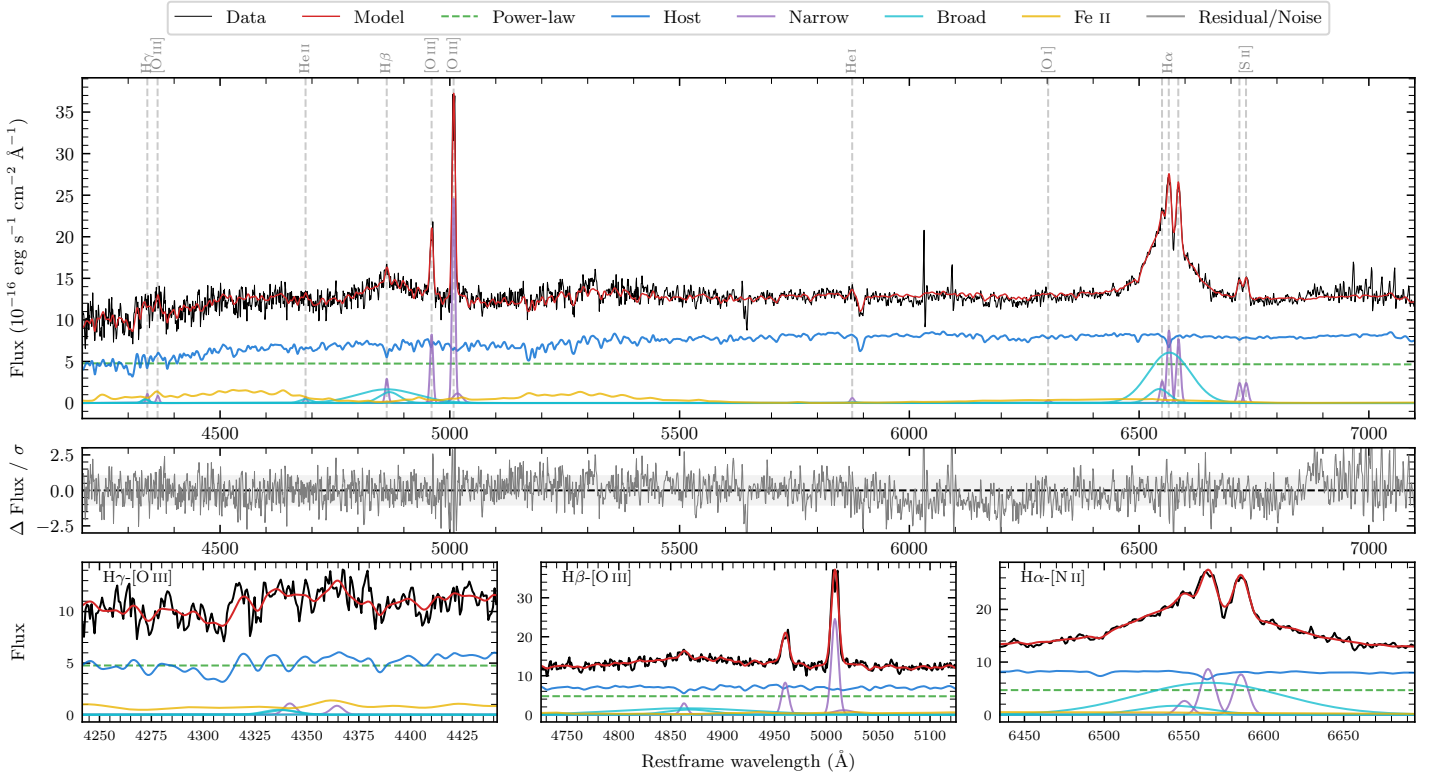
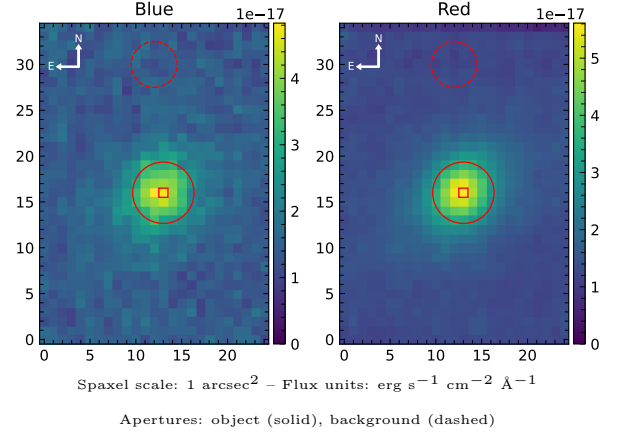


LEDA 1073159

Spectrum ID	5553330_sp1	Spectrum type	Sy 1.5
Alt name	g2202590-031812	Quality flag	good
z	0.0445	AGN reference	6dFGS
RA, Dec	330.7458, -3.3033	MW $E(B - V)$	0.121
MJD	60091.79	Power law α_ν	-1.95 ± 0.05
SNR/ \AA B/R	14.0/25.7	$\log L_{5100, \text{AGN}}$	43.05 ± 0.02
Obs airmass	1.16	$\log H\beta_{\text{Br}}/[\text{O III}]$	0.15 ± 0.03
SMSS ID	5553330	$\log M_{L5100}/M_\odot$	7.98 ± 0.11
Neighbour	None $< 15''$	$\log M_{\text{H}\alpha}/M_\odot$	7.56 ± 0.03
SMSS $\langle r_6 \rangle_{\text{ap}}$	15.99 ± 0.10	$\log M_{\text{H}\beta}/M_\odot$	7.96 ± 0.11
2MASS K_{ext}	11.67 ± 0.07	$\log M_{[\text{O III}]} / M_\odot$	8.03 ± 0.11



Emission Line Measurements

Line	$\log L$ (erg s^{-1})	FWHM (km s^{-1})	σ (km s^{-1})	EW (\AA)
H γ Narrow	39.65 ± 0.30	495 ± 63	326 ± 34	2.03 ± 0.98
Hγ Broad	40.00 ± 0.19	1194 ± 63	428 ± 25	3.71 ± 0.99
[O III] 4364	39.49 ± 0.28	484 ± 63	205 ± 25	1.41 ± 0.60
He II Narrow	39.43 ± 0.33	484 ± 63	205 ± 25	1.22 ± 0.52
He II Broad	39.87 ± 0.28	1965 ± 63	834 ± 25	3.37 ± 1.06
H β Narrow	40.13 ± 0.08	495 ± 63	326 ± 34	6.11 ± 0.82
Hβ Broad	41.22 ± 0.03	5523 ± 662	2901 ± 93	75.31 ± 2.33
[O III] 5007	41.07 ± 0.01	495 ± 63	326 ± 34	52.95 ± 0.87
He I Narrow	39.48 ± 0.22	484 ± 63	205 ± 25	1.38 ± 0.34
He I Broad	39.15 ± 0.51	1207 ± 63	512 ± 25	0.64 ± 0.56
[O I] 6300	39.26 ± 0.27	484 ± 63	205 ± 25	0.83 ± 0.35
H α Narrow	40.68 ± 0.02	484 ± 63	205 ± 25	21.90 ± 0.70
Hα Broad	41.58 ± 0.01	4521 ± 96	1740 ± 25	176.08 ± 1.36
[N II] 6585	40.63 ± 0.02	484 ± 63	205 ± 25	19.43 ± 0.49
[S II] 6718	40.13 ± 0.04	484 ± 63	205 ± 25	6.21 ± 0.38
[S II] 6732	40.13 ± 0.04	484 ± 63	205 ± 25	6.23 ± 0.37

Emission Summary

H α broad SNR	8.30
H β broad SNR	3.34
H γ broad SNR	1.27
AGN frac	0.42
Host frac	0.58
$\log L_{5100, \text{Host}}$	43.20
Fe II/H β	1.13
Fe II/[O III]	1.61

Quality Flags

spurious_hab/hbb	0/0
15100	1
balmer	0
balmer_snr	1
hb_width	1
balmer_width	0