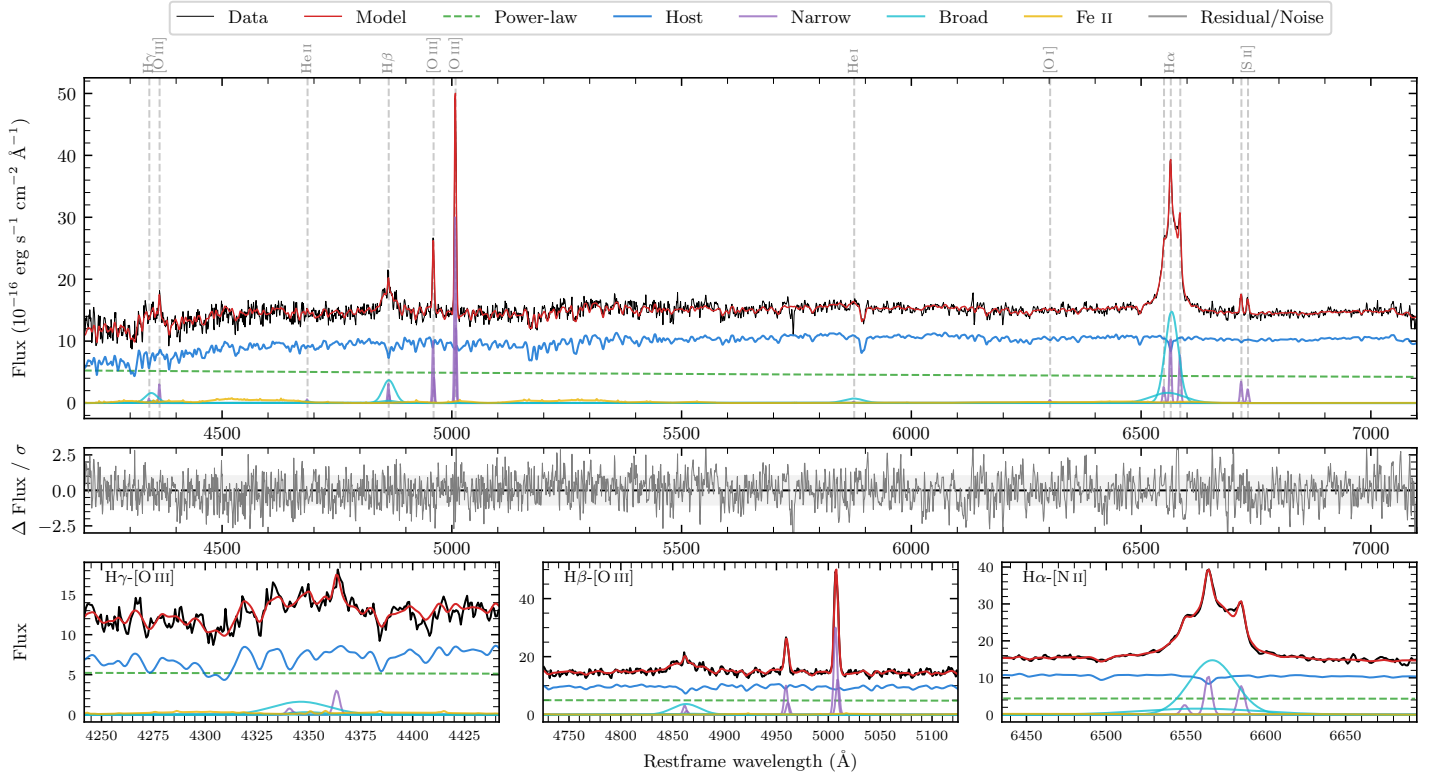
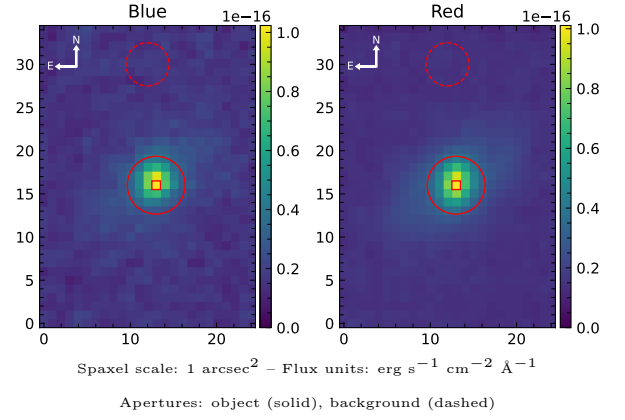


LEDA 1041901

Spectrum ID	5490536_sp1	Spectrum type	Sy 1.5
Alt name	g2202067-053946	Quality flag	good
z	0.0273	AGN reference	6dFGS
RA, Dec	330.5280, -5.6626	MW $E(B - V)$	0.041
MJD	60093.76	Power law α_ν	-1.59 ± 0.20
SNR/ \AA B/R	19.1/33.9	$\log L_{5100, \text{AGN}}$	42.62 ± 0.02
Obs airmass	1.19	$\log H\beta_{\text{Br}}/[\text{O III}]$	-0.10 ± 0.03
SMSS ID	5490536	$\log M_{L5100}/M_\odot$	6.89 ± 0.05
Neighbour	8.9", 1008155266	$\log M_{\text{H}\alpha}/M_\odot$	6.37 ± 0.05
SMSS $\langle r_6''_{\text{ap}} \rangle$	15.86 ± 0.02	$\log M_{\text{H}\beta}/M_\odot$	6.69 ± 0.07
2MASS K_{ext}	12.27 ± 0.07	$\log M_{[\text{O III}]} / M_\odot$	6.84 ± 0.06



Emission Line Measurements

Line	$\log L$ (erg s^{-1})	FWHM (km s^{-1})	σ (km s^{-1})	EW (\AA)
H γ Narrow	38.84 ± 0.31	273 ± 63	113 ± 25	0.79 ± 0.35
Hγ Broad	40.03 ± 0.07	2035 ± 182	784 ± 43	12.21 ± 1.09
[O III] 4364	39.28 ± 0.11	235 ± 63	99 ± 25	2.19 ± 0.33
He II Narrow	38.60 ± 0.36	235 ± 63	99 ± 25	0.48 ± 0.28
He II Broad	39.01 ± 0.36	1311 ± 71	557 ± 29	1.21 ± 0.66
H β Narrow	39.50 ± 0.07	273 ± 63	113 ± 25	3.76 ± 0.32
Hβ Broad	40.38 ± 0.03	1959 ± 83	747 ± 46	28.84 ± 0.94
[O III] 5007	40.48 ± 0.01	273 ± 63	113 ± 25	36.94 ± 0.33
He I Narrow	38.21 ± 0.45	235 ± 63	99 ± 25	0.21 ± 0.20
He I Broad	39.83 ± 0.06	2600 ± 84	1104 ± 35	8.80 ± 0.77
[O I] 6300	38.64 ± 0.26	235 ± 63	99 ± 25	0.59 ± 0.23
H α Narrow	39.99 ± 0.02	235 ± 63	99 ± 25	13.38 ± 0.27
Hα Broad	41.07 ± 0.01	1643 ± 64	707 ± 25	160.53 ± 0.99
[N II] 6585	39.86 ± 0.02	235 ± 63	99 ± 25	9.95 ± 0.25
[S II] 6718	39.52 ± 0.04	235 ± 63	99 ± 25	4.56 ± 0.27
[S II] 6732	39.34 ± 0.06	235 ± 63	99 ± 25	3.02 ± 0.25

Emission Summary

H α broad SNR	20.99
H β broad SNR	5.22
H γ broad SNR	2.59
AGN frac	0.35
Host frac	0.65
$\log L_{5100, \text{Host}}$	42.88
Fe II/H β	0.95
Fe II/[O III]	0.75

Quality Flags

spurious_hab/hbb	0/0
15100	1
balmer	0
balmer_snr	1
hb_width	0
balmer_width	0