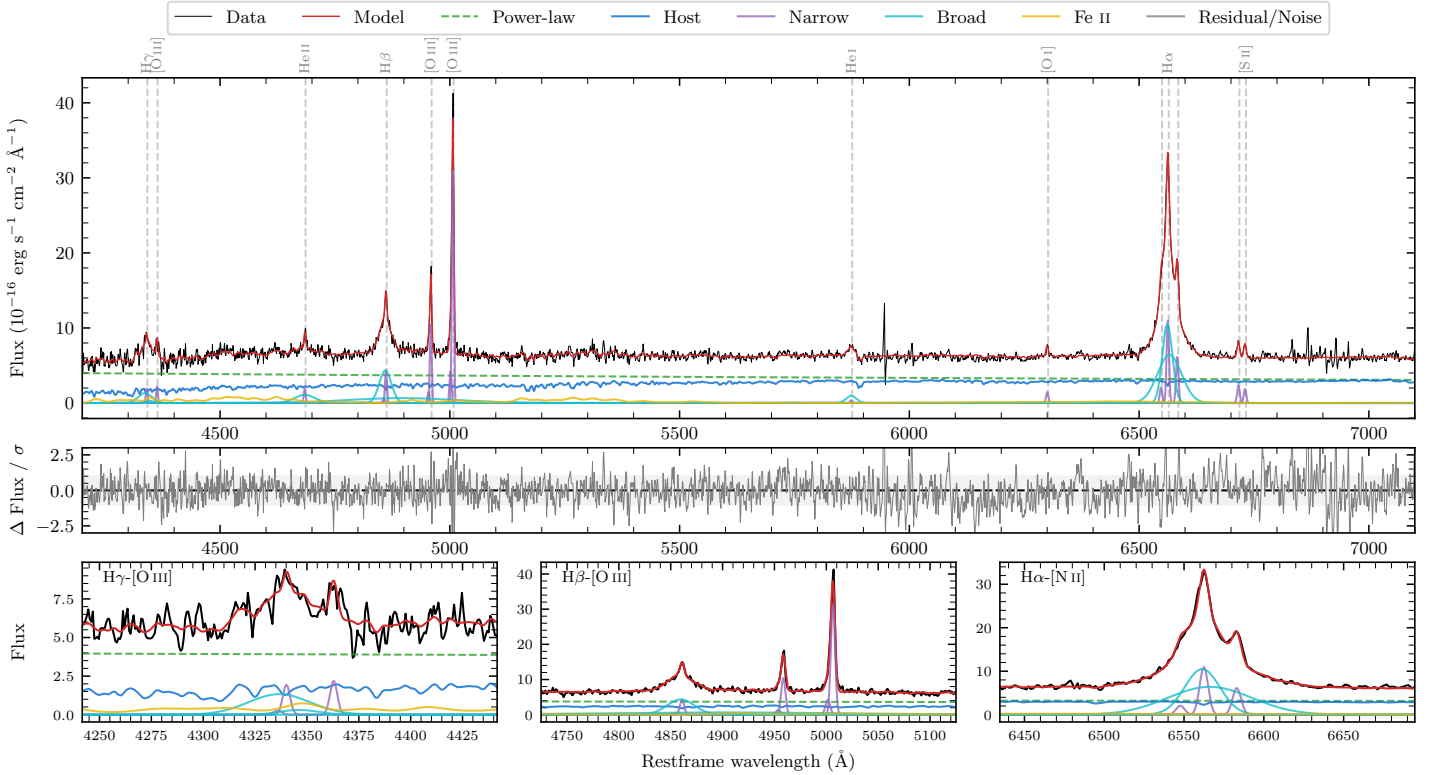
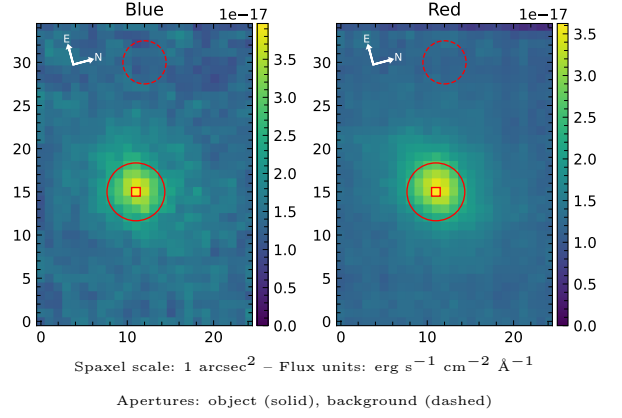


# LEDA 1017286

Spectrum ID	5189111_sp1	Spectrum type	Sy 1.5
Alt name	g2202338-073225	Quality flag	good
$z$	0.0592	AGN reference	6dFGS
RA, Dec	330.6410, -7.5403	MW $E(B-V)$	0.028
MJD	60091.78	Power law $\alpha_\nu$	$-1.51 \pm 0.26$
SNR/ $\text{\AA}$ B/R	11.3/18.1	$\log L_{5100, \text{AGN}}$	$43.20 \pm 0.03$
Obs airmass	1.13	$\log H\beta_{\text{Br}}/[\text{O III}]$	$0.27 \pm 0.02$
SMSS ID	5189111	$\log M_{L5100}/M_\odot$	$7.21 \pm 0.03$
Neighbour	None $< 15''$	$\log M_{\text{H}\alpha}/M_\odot$	$6.77 \pm 0.04$
SMSS $\langle r_6'' \text{ap} \rangle$	$16.57 \pm 0.12$	$\log M_{\text{H}\beta}/M_\odot$	$7.26 \pm 0.04$
2MASS $K_{\text{ext}}$	$12.71 \pm 0.10$	$\log M_{[\text{O III}]} / M_\odot$	$7.28 \pm 0.03$



## Emission Line Measurements

Line	$\log L$ ( $\text{erg s}^{-1}$ )	FWHM ( $\text{km s}^{-1}$ )	$\sigma$ ( $\text{km s}^{-1}$ )	EW ( $\text{\AA}$ )
H $\gamma$ Narrow	$39.96 \pm 0.12$	$303 \pm 63$	$160 \pm 26$	$2.68 \pm 0.42$
<b>H<math>\gamma</math> Broad</b>	<b><math>40.71 \pm 0.06</math></b>	<b><math>2358 \pm 177</math></b>	<b><math>872 \pm 53</math></b>	<b><math>15.37 \pm 1.12</math></b>
[O III] 4364	$39.95 \pm 0.09$	$288 \pm 63$	$121 \pm 25$	$2.66 \pm 0.38$
He II Narrow	$39.95 \pm 0.09$	$288 \pm 63$	$121 \pm 25$	$2.78 \pm 0.34$
<b>He II Broad</b>	<b><math>40.73 \pm 0.06</math></b>	<b><math>3352 \pm 148</math></b>	<b><math>1423 \pm 62</math></b>	<b><math>17.08 \pm 1.18</math></b>
H $\beta$ Narrow	$40.36 \pm 0.05$	$303 \pm 63$	$160 \pm 26$	$7.22 \pm 0.39$
<b>H<math>\beta</math> Broad</b>	<b><math>41.49 \pm 0.02</math></b>	<b><math>2125 \pm 67</math></b>	<b><math>3557 \pm 99</math></b>	<b><math>97.41 \pm 2.81</math></b>
[O III] 5007	$41.22 \pm 0.01$	$303 \pm 63$	$160 \pm 26$	$53.05 \pm 0.43$
He I Narrow	$39.33 \pm 0.27$	$288 \pm 63$	$121 \pm 25$	$0.74 \pm 0.25$
<b>He I Broad</b>	<b><math>40.39 \pm 0.06</math></b>	<b><math>1335 \pm 91</math></b>	<b><math>567 \pm 37</math></b>	<b><math>8.31 \pm 0.57</math></b>
[O I] 6300	$39.92 \pm 0.05$	$288 \pm 63$	$121 \pm 25$	$3.02 \pm 0.25$
H $\alpha$ Narrow	$40.82 \pm 0.02$	$288 \pm 63$	$121 \pm 25$	$24.32 \pm 0.39$
<b>H<math>\alpha</math> Broad</b>	<b><math>41.81 \pm 0.01</math></b>	<b><math>1545 \pm 65</math></b>	<b><math>765 \pm 25</math></b>	<b><math>235.35 \pm 1.04</math></b>
[N II] 6585	$40.57 \pm 0.02$	$288 \pm 63$	$121 \pm 25$	$13.68 \pm 0.35$
[S II] 6718	$40.17 \pm 0.03$	$288 \pm 63$	$121 \pm 25$	$5.46 \pm 0.29$
[S II] 6732	$40.06 \pm 0.04$	$288 \pm 63$	$121 \pm 25$	$4.32 \pm 0.27$

## Emission Summary

H $\alpha$ broad SNR	28.80
H $\beta$ broad SNR	8.50
H $\gamma$ broad SNR	2.75
AGN frac	0.61
Host frac	0.39
$\log L_{5100, \text{Host}}$	43.00
Fe II/H $\beta$	0.51
Fe II/[O III]	0.95

## Quality Flags

spurious_hab/hbb	0/0
15100	0
balmer	0
balmer_snr	1
hb_width	2
balmer_width	0