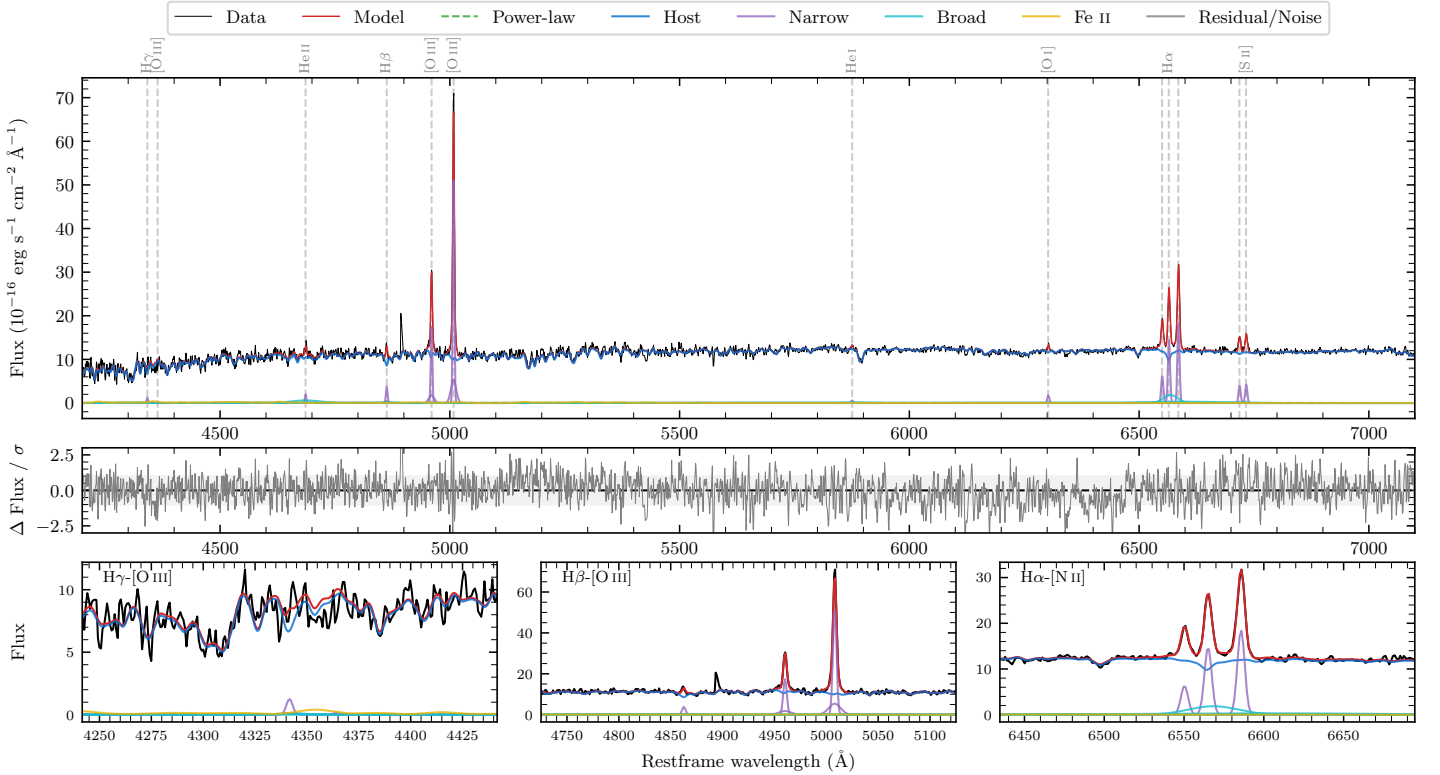
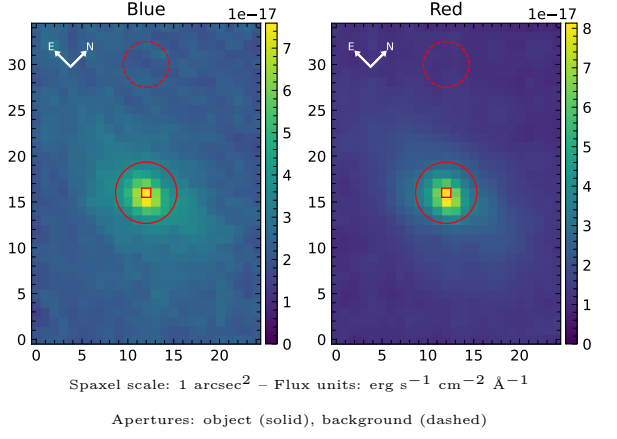


NGC 7158

Spectrum ID	5090761_sp1	Spectrum type	Sy 1.8+
Alt name	g2156566-113931	Quality flag	good
z	0.0281	AGN reference	6dFGS
RA, Dec	329.2358, -11.6586	MW $E(B-V)$	0.036
MJD	60164.68	Power law α_ν	-0.64 ± 0.74
SNR/ \AA B/R	13.3/27.9	$\log L_{5100, \text{AGN}}$	40.56 ± 0.62
Obs airmass	1.12	$\log H\beta_{\text{Br}}/[\text{O III}]$	< -0.97
SMSS ID	5090761	$\log M_{L5100}/M_\odot$	—
Neighbour	None $< 15''$	$\log M_{H\alpha}/M_\odot$	6.05 ± 0.08
SMSS $\langle r_6''_{\text{ap}} \rangle$	15.81 ± 0.04	$\log M_{H\beta}/M_\odot$	—
2MASS K_{ext}	11.47 ± 0.08	$\log M_{[\text{O III}]} / M_\odot$	—



Emission Line Measurements

Line	$\log L$ (erg s ⁻¹)	FWHM (km s ⁻¹)	σ (km s ⁻¹)	EW (Å)
H γ Narrow	39.07 ± 0.27	266 ± 63	193 ± 26	130.81 ± 67.72
Hγ Broad	—	—	—	—
[O III] 4364	—	—	—	—
He II Narrow	39.18 ± 0.16	248 ± 62	104 ± 25	186.64 ± 36.57
He II Broad	39.93 ± 0.13	4505 ± 63	1913 ± 25	1042.61 ± 156.57
H β Narrow	39.61 ± 0.08	266 ± 63	193 ± 26	520.33 ± 63.64
Hβ Broad	< 39.78	—	—	—
[O III] 5007	40.75 ± 0.01	266 ± 63	193 ± 26	7610.03 ± 72.41
He I Narrow	38.75 ± 0.24	248 ± 62	104 ± 25	94.83 ± 29.11
He I Broad	39.11 ± 0.30	2328 ± 63	988 ± 25	216.88 ± 88.02
[O I] 6300	39.26 ± 0.08	248 ± 62	104 ± 25	330.68 ± 32.91
H α Narrow	40.20 ± 0.01	248 ± 62	104 ± 25	3042.99 ± 37.63
Hα Broad	40.38 ± 0.04	1842 ± 83	1313 ± 91	4651.19 ± 192.32
[N II] 6585	40.30 ± 0.01	248 ± 62	104 ± 25	3844.78 ± 37.69
[S II] 6718	39.63 ± 0.03	248 ± 62	104 ± 25	862.39 ± 39.85
[S II] 6732	39.67 ± 0.03	248 ± 62	104 ± 25	933.80 ± 38.86

Emission Summary

H α broad SNR	2.63
H β broad SNR	0.42
H γ broad SNR	0.00
AGN frac	0.00
Host frac	1.00
$\log L_{5100, \text{Host}}$	42.98
Fe II/H β	—
Fe II/[O III]	0.16

Quality Flags

spurious_hab/hbb	0/0
15100	2
balmer	2
balmer_snr	2
hb_width	2
balmer_width	2