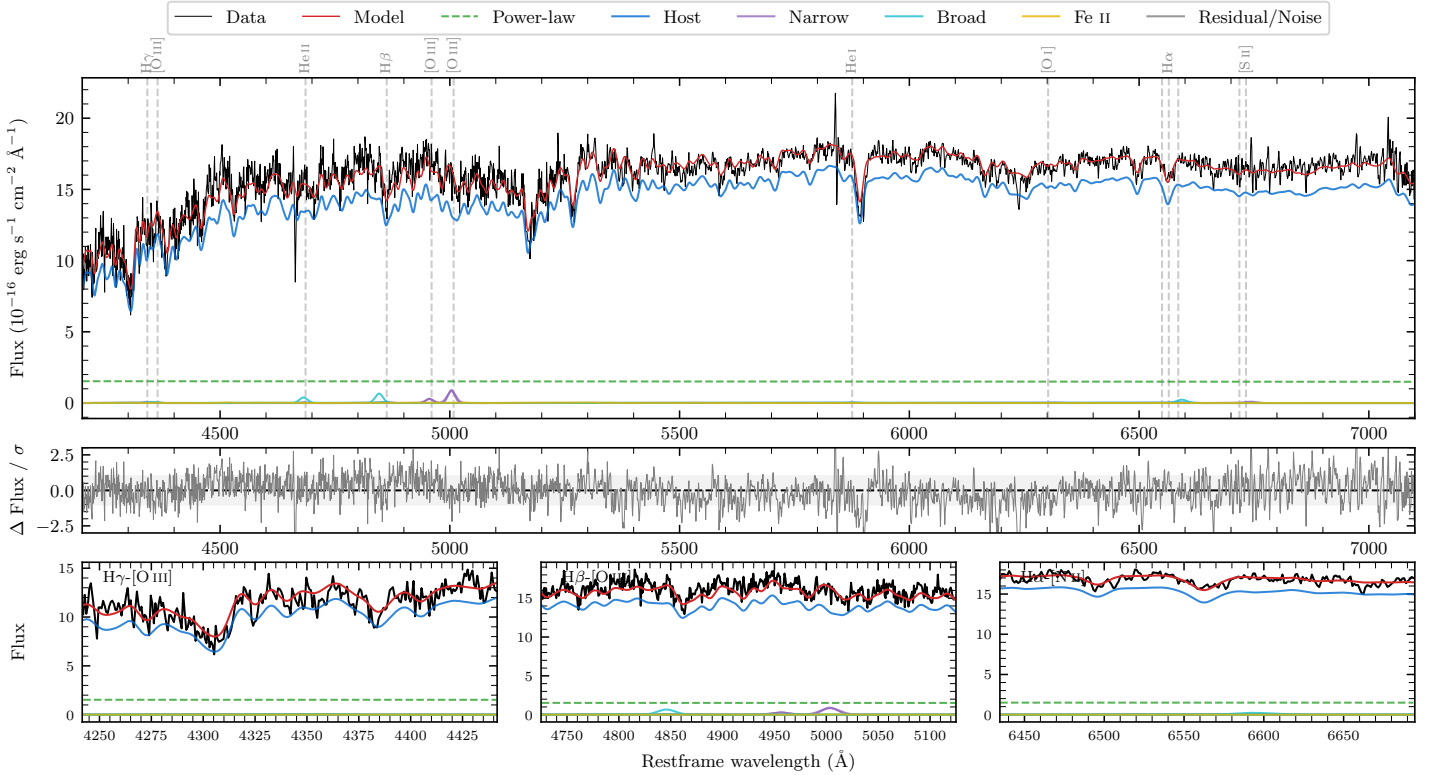
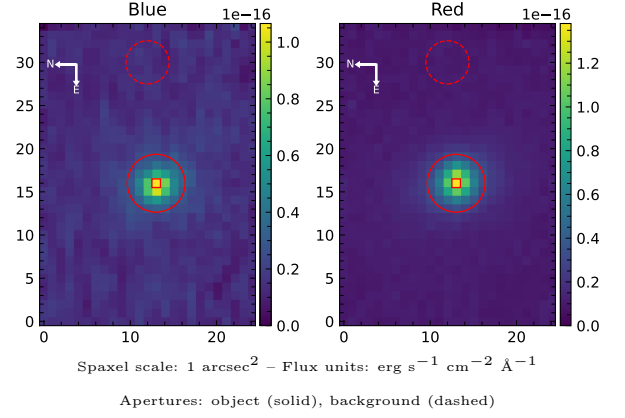


LEDA 131166

Spectrum ID	505027733_sp1	Spectrum type	Non-ELG
Alt name	DUKST 300-12	Quality flag	good
z	0.0780	AGN reference	PGC
RA, Dec	48.7149, -41.1494	MW $E(B-V)$	0.011
MJD	60905.79	Power law α_ν	-1.95 ± 0.01
SNR/ \AA B/R	17.2/33.2	$\log L_{5100, \text{AGN}}$	43.08 ± 0.02
Obs airmass	1.02	$\log H\beta_{\text{Br}}/[\text{O III}]$	—
SMSS ID	505027733	$\log M_{L5100}/M_\odot$	—
Neighbour	None $< 15''$	$\log M_{\text{H}\alpha}/M_\odot$	—
SMSS $\langle r_6''_{\text{ap}} \rangle$	15.58 ± 0.02	$\log M_{\text{H}\beta}/M_\odot$	—
2MASS K_{ext}	11.43 ± 0.05	$\log M_{[\text{O III}]} / M_\odot$	—



Emission Line Measurements

Line	$\log L$ (erg s^{-1})	FWHM (km s^{-1})	σ (km s^{-1})	EW (\AA)
H γ Narrow	—	—	—	—
Hγ Broad	—	—	—	—
[O III] 4364	—	—	—	—
He II Narrow	—	—	—	—
He II Broad	40.15 ± 0.20	1306 ± 62	554 ± 25	6.03 ± 3.01
H β Narrow	—	—	—	—
Hβ Broad	—	—	—	—
[O III] 5007	40.78 ± 0.06	1146 ± 63	503 ± 25	25.58 ± 3.01
He I Narrow	—	—	—	—
He I Broad	—	—	—	—
[O I] 6300	—	—	—	—
H α Narrow	—	—	—	—
Hα Broad	—	—	—	—
[N II] 6585	—	—	—	—
[S II] 6718	—	—	—	—
[S II] 6732	—	—	—	—

Emission Summary

H α broad SNR	0.35
H β broad SNR	0.00
H γ broad SNR	0.00
AGN frac	0.10
Host frac	0.90
$\log L_{5100, \text{Host}}$	44.03
Fe II/H β	—
Fe II/[O III]	—

Quality Flags

spurious_hab/hbb	0/0
15100	2
balmer	2
balmer_snr	2
hb_width	2
balmer_width	2