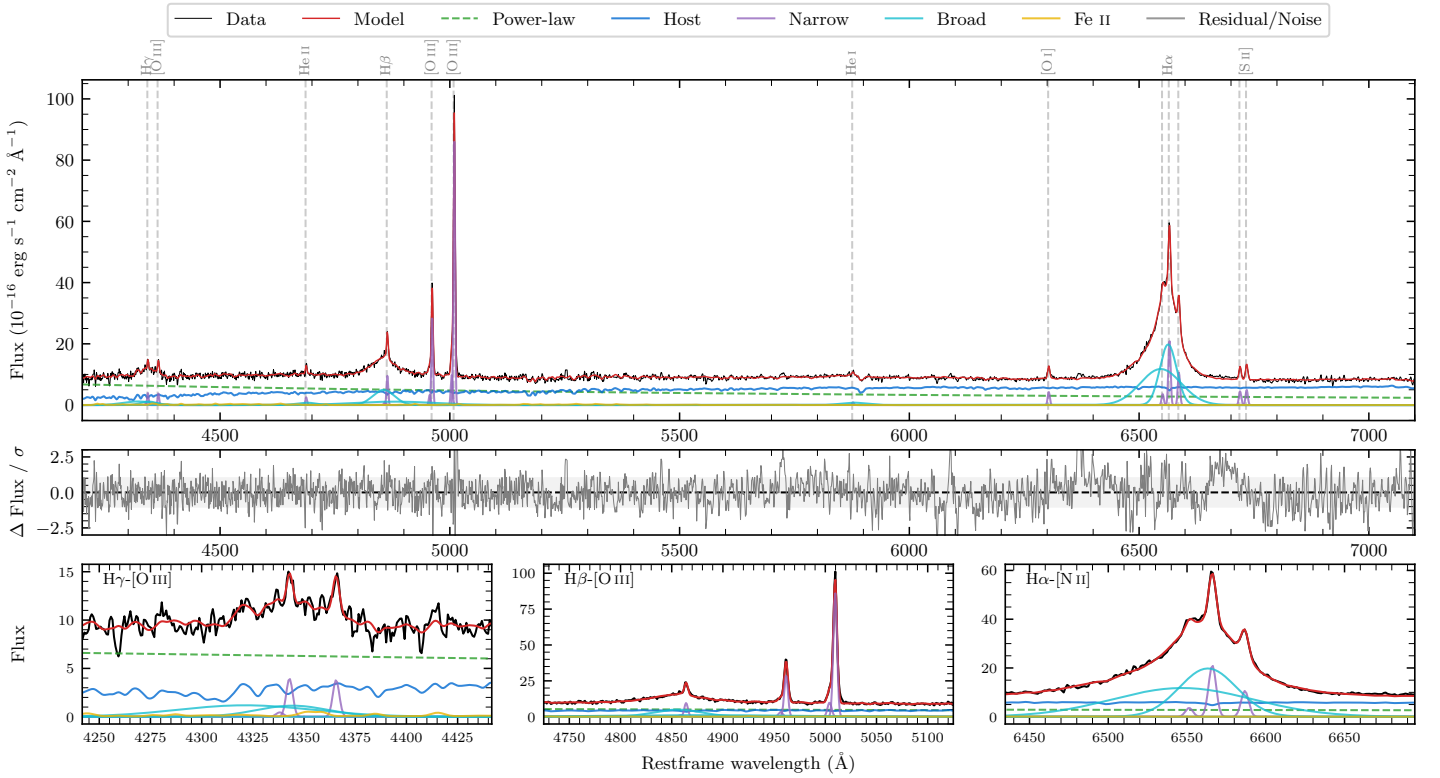
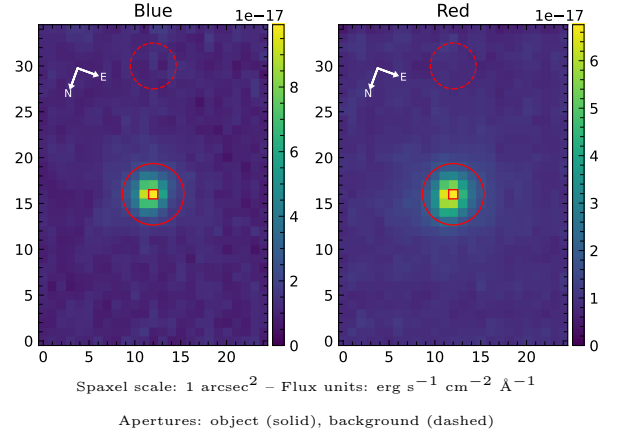


LEDA 74091

Spectrum ID	504979870_sp1	Spectrum type	Sy 1.5
Alt name	g0238490-403838	Quality flag	good
z	0.0614	AGN reference	6dFGS
RA, Dec	39.7041, -40.6439	MW $E(B - V)$	0.022
MJD	60182.77	Power law α_ν	-0.01 ± 0.15
SNR/ \AA B/R	13.1/21.8	$\log L_{5100, \text{AGN}}$	43.32 ± 0.02
Obs airmass	1.01	$\log H\beta_{\text{Br}}/[\text{O III}]$	-0.18 ± 0.15
SMSS ID	504979870	$\log M_{L5100}/M_\odot$	7.68 ± 0.04
Neighbour	None $< 15''$	$\log M_{\text{H}\alpha}/M_\odot$	7.53 ± 0.03
SMSS $\langle r_6''_{\text{ap}} \rangle$	15.84 ± 0.32	$\log M_{\text{H}\beta}/M_\odot$	7.65 ± 0.08
2MASS K_{ext}	12.15 ± 0.08	$\log M_{[\text{O III}]} / M_\odot$	7.88 ± 0.03



Emission Line Measurements

Line	$\log L$ (erg s ⁻¹)	FWHM (km s ⁻¹)	σ (km s ⁻¹)	EW (Å)
H γ Narrow	40.23 ± 0.07	265 ± 62	152 ± 25	2.97 ± 0.31
Hγ Broad	41.15 ± 0.05	4439 ± 598	1724 ± 131	24.82 ± 1.29
[O III] 4364	40.16 ± 0.07	259 ± 63	109 ± 25	2.57 ± 0.27
He II Narrow	40.02 ± 0.09	259 ± 63	109 ± 25	2.17 ± 0.28
He II Broad	—	—	—	—
H β Narrow	40.66 ± 0.02	265 ± 62	152 ± 25	10.11 ± 0.38
Hβ Broad	$41.44^{+0.27}_{-0.02}$	3402 ± 121	1245 ± 48	61.31 ± 1.12
[O III] 5007	41.63 ± 0.01	265 ± 62	152 ± 25	99.58 ± 0.44
He I Narrow	39.66 ± 0.14	259 ± 63	109 ± 25	1.47 ± 0.29
He I Broad	40.72 ± 0.05	3252 ± 282	1381 ± 119	16.81 ± 1.03
[O I] 6300	40.37 ± 0.02	259 ± 63	109 ± 25	8.70 ± 0.31
H α Narrow	41.08 ± 0.01	259 ± 63	109 ± 25	48.33 ± 0.56
Hα Broad	42.33 ± 0.01	2583 ± 66	1277 ± 25	845.92 ± 1.80
[N II] 6585	40.78 ± 0.01	259 ± 63	109 ± 25	24.54 ± 0.50
[S II] 6718	40.42 ± 0.02	259 ± 63	109 ± 25	11.08 ± 0.37
[S II] 6732	40.47 ± 0.02	259 ± 63	109 ± 25	12.36 ± 0.39

Emission Summary

H α broad SNR	42.88
H β broad SNR	6.90
H γ broad SNR	2.92
AGN frac	0.52
Host frac	0.48
$\log L_{5100, \text{Host}}$	43.29
Fe II/H β	—
Fe II/[O III]	—

Quality Flags

spurious_hab/hbb	0/2
15100	0
balmer	0
balmer_snr	1
hb_width	0
balmer_width	0