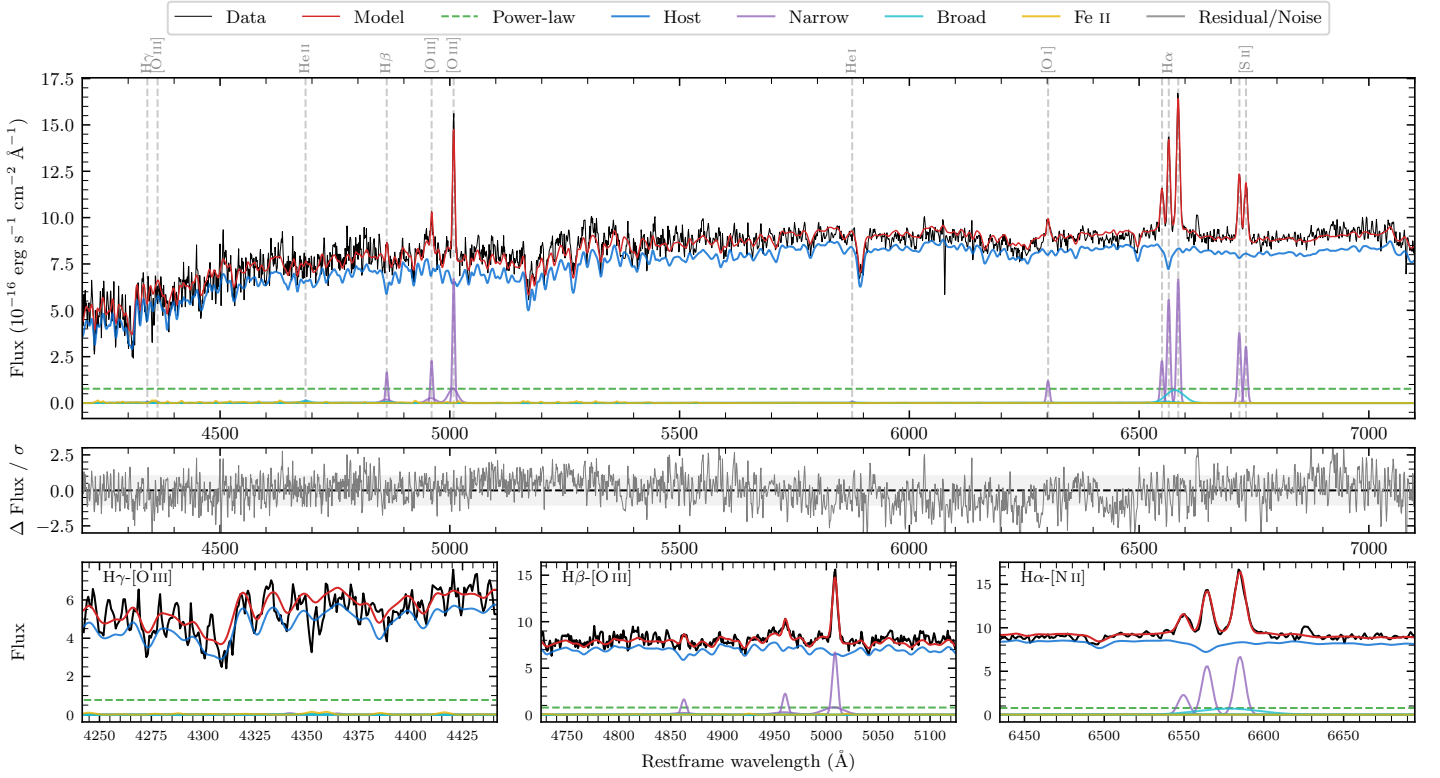
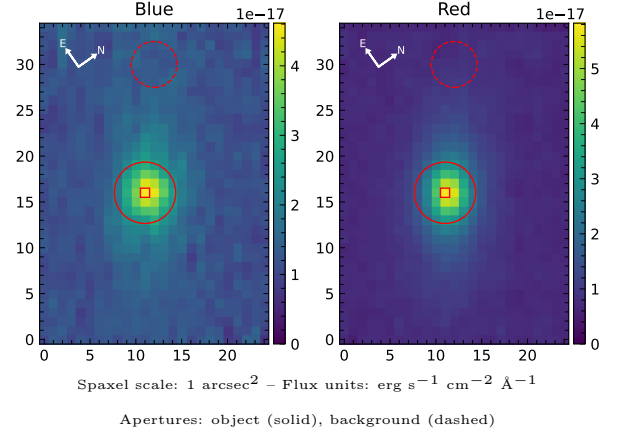


LEDA 130199

Spectrum ID	504927475_sp1	Spectrum type	Sy 2
Alt name	g0211191-425934	Quality flag	good
z	0.0373	AGN reference	6dFGS
RA, Dec	32.8295, -42.9928	MW $E(B - V)$	0.011
MJD	60166.79	Power law α_ν	-1.99 ± 0.01
SNR/ \AA B/R	13.9/30.1	$\log L_{5100, \text{AGN}}$	42.10 ± 0.07
Obs airmass	1.02	$\log H\beta_{\text{Br}}/[\text{O III}]$	—
SMSS ID	504927475	$\log M_{L5100}/M_\odot$	—
Neighbour	None $< 15''$	$\log M_{\text{H}\alpha}/M_\odot$	—
SMSS $\langle r_6''_{\text{ap}} \rangle$	15.92 ± 0.01	$\log M_{\text{H}\beta}/M_\odot$	—
2MASS K_{ext}	11.96 ± 0.07	$\log M_{[\text{O III}]} / M_\odot$	—



Emission Line Measurements

Line	$\log L$ (erg s $^{-1}$)	FWHM (km s $^{-1}$)	σ (km s $^{-1}$)	EW (Å)
H γ Narrow	—	—	—	—
Hγ Broad	—	—	—	—
[O III] 4364	—	—	—	—
He II Narrow	—	—	—	—
He II Broad	39.02 ± 0.47	1453 ± 62	616 ± 25	4.23 ± 3.47
H β Narrow	39.69 ± 0.10	386 ± 63	364 ± 39	20.02 ± 3.30
Hβ Broad	—	—	—	—
[O III] 5007	40.32 ± 0.03	386 ± 63	364 ± 39	84.33 ± 3.42
He I Narrow	—	—	—	—
He I Broad	—	—	—	—
[O I] 6300	39.50 ± 0.06	355 ± 62	150 ± 25	12.75 ± 1.07
H α Narrow	40.31 ± 0.02	355 ± 62	150 ± 25	62.63 ± 1.18
Hα Broad	—	—	—	—
[N II] 6585	40.38 ± 0.02	355 ± 62	150 ± 25	74.72 ± 1.21
[S II] 6718	40.03 ± 0.02	355 ± 62	150 ± 25	43.55 ± 1.28
[S II] 6732	39.94 ± 0.02	355 ± 62	150 ± 25	34.84 ± 1.25

Emission Summary

H α broad SNR	0.00
H β broad SNR	0.00
H γ broad SNR	0.00
AGN frac	0.10
Host frac	0.90
$\log L_{5100, \text{Host}}$	43.04
Fe II/H β	—
Fe II/[O III]	—

Quality Flags

spurious_hab/hbb	1/0
15100	2
balmer	2
balmer_snr	2
hb_width	2
balmer_width	2