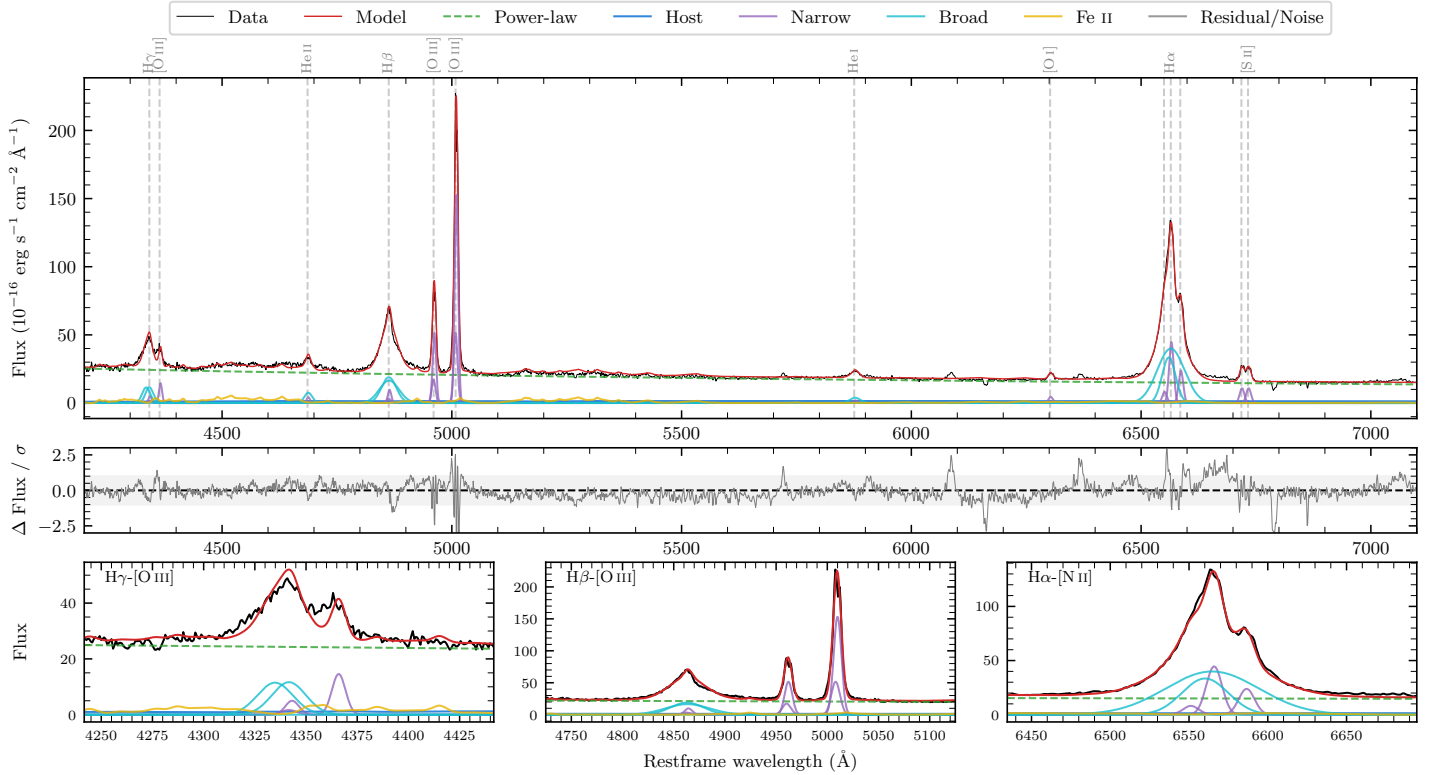
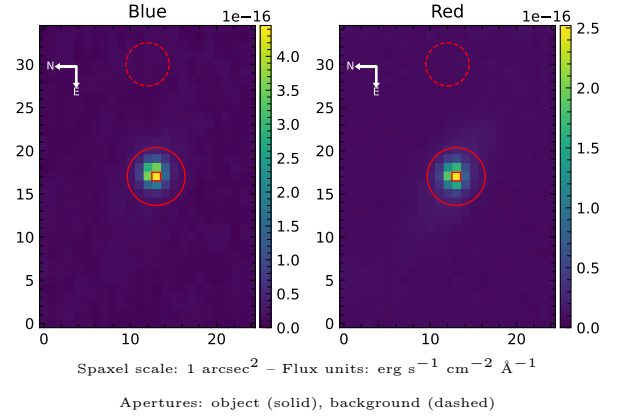


# FRL 1106

Spectrum ID	504738632_sp1	Spectrum type	Sy 1.5
Alt name	ESO -LV3010131	Quality flag	good
$z$	0.0580	AGN reference	<a href="#">PGC</a>
RA, Dec	51.2595, -41.9049	MW $E(B - V)$	0.010
MJD	60912.79	Power law $\alpha_\nu$	$-0.83 \pm 0.09$
SNR/ $\text{\AA}$ B/R	6.5/9.3	$\log L_{5100, \text{AGN}}$	$43.92 \pm 0.03$
Obs airmass	1.02	$\log H\beta_{\text{Br}}/[\text{O III}]$	$-0.10 \pm 0.03$
SMSS ID	<a href="#">504738632</a>	$\log M_{L5100}/M_\odot$	$7.65 \pm 0.10$
Neighbour	None $< 15''$	$\log M_{H\alpha}/M_\odot$	$7.58 \pm 0.08$
SMSS $\langle r_6'' \text{ap} \rangle$	$15.48 \pm 0.11$	$\log M_{H\beta}/M_\odot$	$7.67 \pm 0.10$
2MASS $K_{\text{ext}}$	$11.94 \pm 0.05$	$\log M_{[\text{O III}]} / M_\odot$	$7.89 \pm 0.11$



## Emission Line Measurements

Line	$\log L$ ( $\text{erg s}^{-1}$ )	FWHM ( $\text{km s}^{-1}$ )	$\sigma$ ( $\text{km s}^{-1}$ )	EW ( $\text{\AA}$ )
H $\gamma$ Narrow	$40.67 \pm 0.27$	$570 \pm 68$	$248 \pm 26$	$2.48 \pm 0.60$
<b>H<math>\gamma</math> Broad</b>	<b><math>41.64 \pm 0.06</math></b>	<b><math>1658 \pm 281</math></b>	<b><math>553 \pm 77</math></b>	<b><math>21.32 \pm 0.97</math></b>
[O III] 4364	$40.98 \pm 0.14$	$537 \pm 91$	$228 \pm 38$	$5.33 \pm 0.57$
He II Narrow	$40.40 \pm 0.39$	$537 \pm 91$	$228 \pm 38$	$1.83 \pm 0.53$
<b>He II Broad</b>	<b><math>41.15 \pm 0.11</math></b>	<b><math>1281 \pm 110</math></b>	<b><math>544 \pm 46</math></b>	<b><math>7.72 \pm 0.83</math></b>
H $\beta$ Narrow	$41.02 \pm 0.19$	$570 \pm 68$	$248 \pm 26$	$6.21 \pm 0.65$
<b>H<math>\beta</math> Broad</b>	<b><math>42.13 \pm 0.03</math></b>	<b><math>2456 \pm 285</math></b>	<b><math>998 \pm 160</math></b>	<b><math>81.45 \pm 1.37</math></b>
[O III] 5007	$42.23 \pm 0.01$	$570 \pm 68$	$248 \pm 26$	$103.66 \pm 0.78$
He I Narrow	$40.16 \pm 0.38$	$537 \pm 91$	$228 \pm 38$	$1.40 \pm 0.39$
<b>He I Broad</b>	<b><math>40.98 \pm 0.10</math></b>	<b><math>1348 \pm 166</math></b>	<b><math>572 \pm 70</math></b>	<b><math>6.80 \pm 0.62</math></b>
[O I] 6300	$40.61 \pm 0.14$	$537 \pm 91$	$228 \pm 38$	$3.66 \pm 0.40$
H $\alpha$ Narrow	$41.68 \pm 0.12$	$537 \pm 91$	$228 \pm 38$	$39.51 \pm 0.84$
<b>H<math>\alpha</math> Broad</b>	<b><math>42.56 \pm 0.02</math></b>	<b><math>2335 \pm 201</math></b>	<b><math>977 \pm 100</math></b>	<b><math>295.56 \pm 1.44</math></b>
[N II] 6585	$41.41 \pm 0.21$	$537 \pm 91$	$228 \pm 38$	$21.26 \pm 0.75$
[S II] 6718	$41.05 \pm 0.06$	$537 \pm 91$	$228 \pm 38$	$10.09 \pm 0.49$
[S II] 6732	$41.05 \pm 0.06$	$537 \pm 91$	$228 \pm 38$	$10.16 \pm 0.49$

## Emission Summary

H $\alpha$ broad SNR	19.88
H $\beta$ broad SNR	9.48
H $\gamma$ broad SNR	5.32
AGN frac	0.94
Host frac	0.06
$\log L_{5100, \text{Host}}$	42.76
Fe II/H $\beta$	0.54
Fe II/[O III]	0.44

## Quality Flags

spurious_hab/hbb	0/0
15100	0
balmer	0
balmer_snr	0
hb_width	0
balmer_width	0