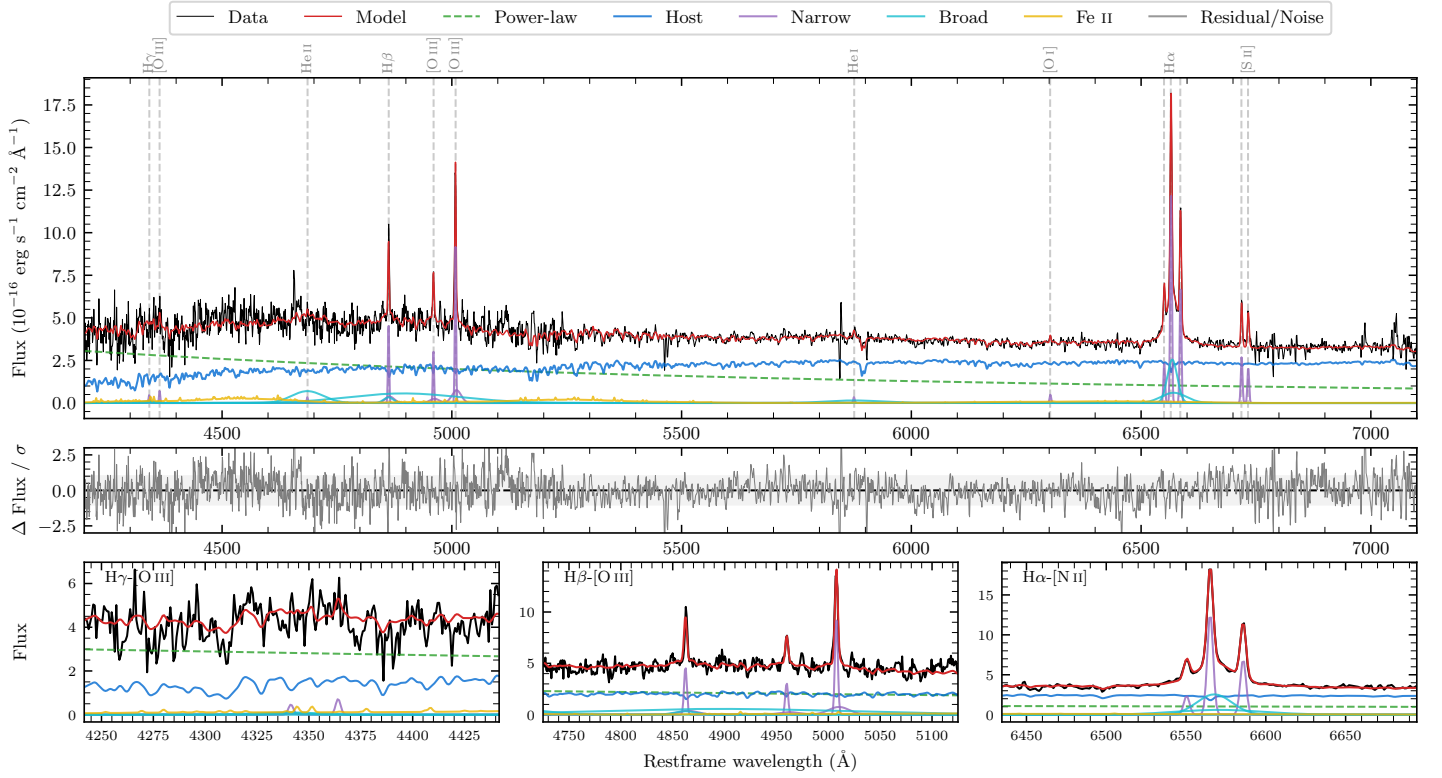
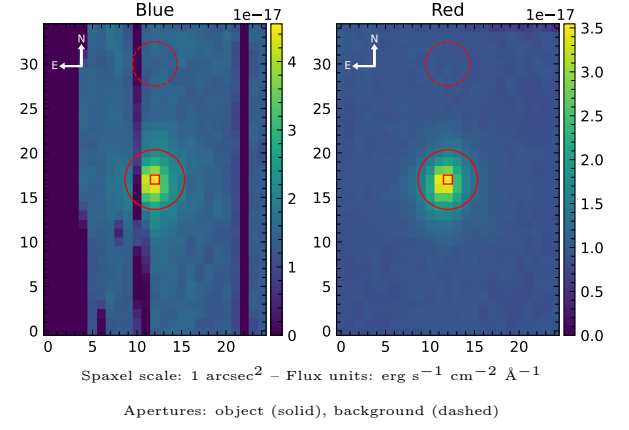


# 6dFGS gJ034623.7–441625

Spectrum ID	504582544_sp1	Spectrum type	Sy 1.8+
Alt name	g0346237–441625	Quality flag	good
$z$	0.0781	AGN reference	6dFGS
RA, Dec	56.5986, –44.2736	MW $E(B - V)$	0.010
MJD	60255.61	Power law $\alpha_\nu$	$0.44 \pm 0.06$
SNR/ $\text{\AA}$ B/R	9.6/15.9	$\log L_{5100, \text{AGN}}$	$43.17 \pm 0.02$
Obs airmass	1.04	$\log H\beta_{\text{Br}}/[\text{O III}]$	$< -0.59$
SMSS ID	504582544	$\log M_{L5100}/M_\odot$	–
Neighbour	None $< 15''$	$\log M_{\text{H}\alpha}/M_\odot$	$6.30 \pm 0.05$
SMSS $\langle r_6''_{\text{ap}} \rangle$	$17.28 \pm 0.15$	$\log M_{\text{H}\beta}/M_\odot$	–
2MASS $K_{\text{ext}}$	$13.25 \pm 0.19$	$\log M_{[\text{O III}]} / M_\odot$	–



## Emission Line Measurements

Line	$\log L$ (erg s $^{-1}$ )	FWHM (km s $^{-1}$ )	$\sigma$ (km s $^{-1}$ )	EW (Angstroms)
H $\gamma$ Narrow	–	–	–	–
<b>H<math>\gamma</math> Broad</b>	–	–	–	–
[O III] 4364	$39.55 \pm 0.28$	$205 \pm 62$	$83 \pm 25$	$0.84 \pm 0.37$
He II Narrow	$39.25 \pm 0.39$	$205 \pm 62$	$83 \pm 25$	$0.51 \pm 0.36$
<b>He II Broad</b>	–	–	–	–
H $\beta$ Narrow	$40.61 \pm 0.06$	$209 \pm 63$	$379 \pm 37$	$12.61 \pm 1.17$
<b>H<math>\beta</math> Broad</b>	$< 40.33$	–	–	–
[O III] 5007	$40.92 \pm 0.03$	$209 \pm 63$	$379 \pm 37$	$27.57 \pm 1.24$
He I Narrow	$39.36 \pm 0.22$	$205 \pm 62$	$83 \pm 25$	$1.13 \pm 0.35$
<b>He I Broad</b>	<b><math>40.56 \pm 0.11</math></b>	<b><math>7054 \pm 63</math></b>	<b><math>2995 \pm 25</math></b>	<b><math>17.82 \pm 2.21</math></b>
[O I] 6300	$39.54 \pm 0.13$	$205 \pm 62$	$83 \pm 25$	$2.05 \pm 0.69$
H $\alpha$ Narrow	$40.97 \pm 0.01$	$205 \pm 62$	$83 \pm 25$	$60.74 \pm 0.53$
<b>H<math>\alpha</math> Broad</b>	<b><math>41.26 \pm 0.01</math></b>	<b><math>1333 \pm 68</math></b>	<b><math>597 \pm 29</math></b>	<b><math>117.04 \pm 1.82</math></b>
[N II] 6585	$40.71 \pm 0.01$	$205 \pm 62$	$83 \pm 25$	$33.48 \pm 0.48$
[S II] 6718	$40.31 \pm 0.05$	$205 \pm 62$	$83 \pm 25$	$14.05 \pm 0.88$
[S II] 6732	$40.20 \pm 0.04$	$205 \pm 62$	$83 \pm 25$	$10.84 \pm 0.59$

## Emission Summary

H $\alpha$ broad SNR	7.01
H $\beta$ broad SNR	0.74
H $\gamma$ broad SNR	0.00
AGN frac	0.51
Host frac	0.49
$\log L_{5100, \text{Host}}$	43.15
Fe II/H $\beta$	–
Fe II/[O III]	–

## Quality Flags

spurious_hab/hbb	0/1
15100	2
balmer	2
balmer_snr	2
hb_width	2
balmer_width	2