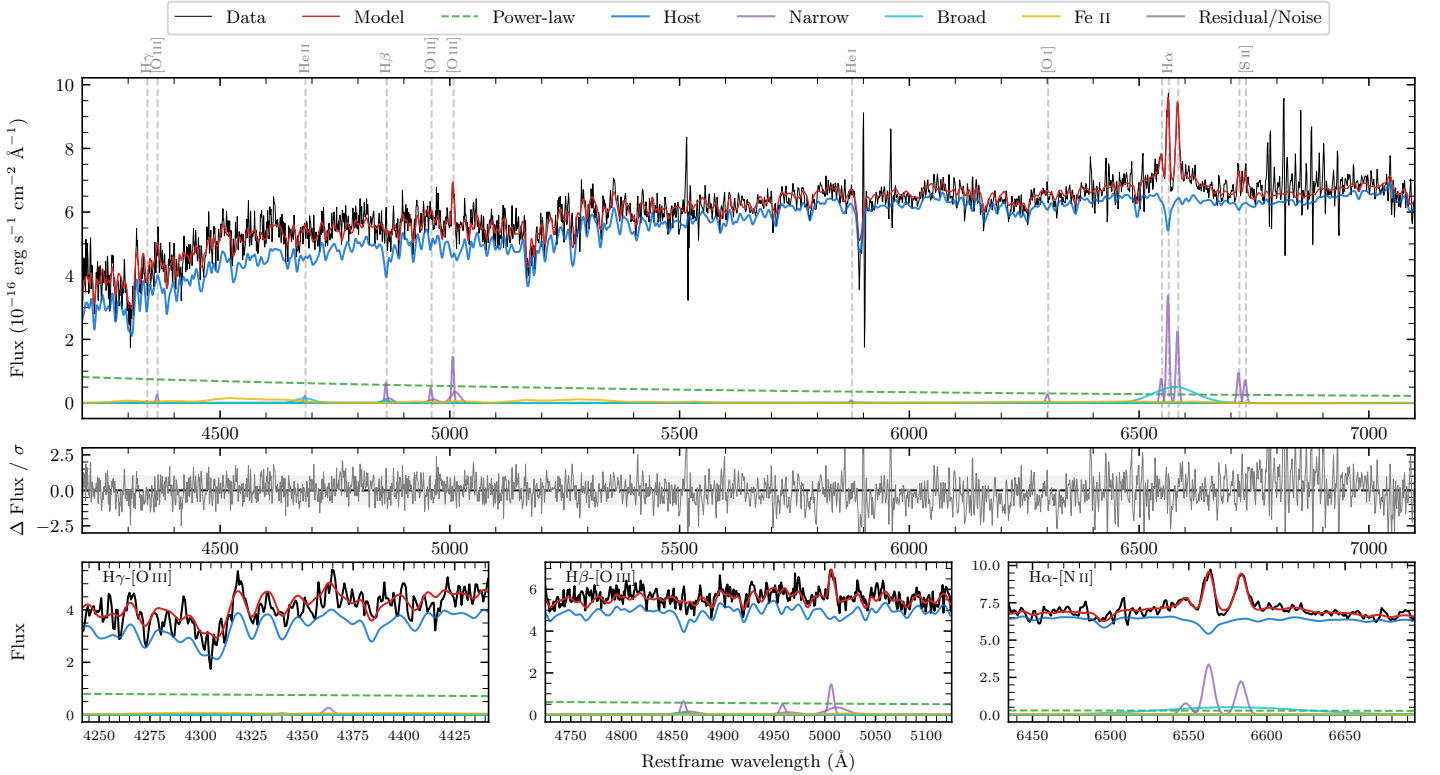
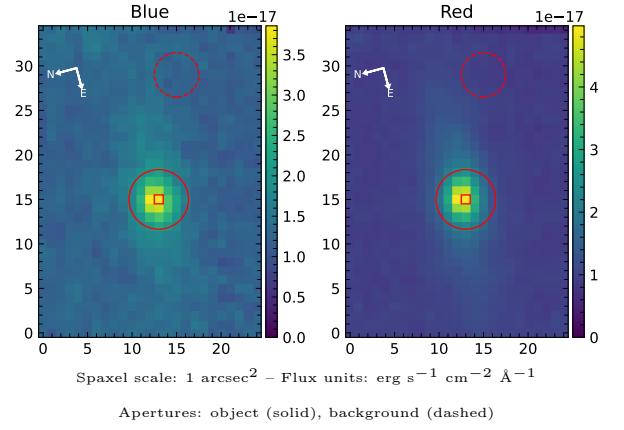


# LEDA 144731

Spectrum ID	504440955_sp1	Spectrum type	Sy 1.5+
Alt name	g0218570-474960	Quality flag	good
$z$	0.0673	AGN reference	6dFGS
RA, Dec	34.7375, -47.8333	MW $E(B - V)$	0.021
MJD	60197.72	Power law $\alpha_\nu$	$0.46 \pm 0.04$
SNR/ $\text{\AA}$ B/R	12.9/25.6	$\log L_{5100, \text{AGN}}$	$42.46 \pm 0.04$
Obs airmass	1.04	$\log H\beta_{\text{Br}}/[\text{O III}]$	$< 0.17$
SMSS ID	504440955	$\log M_{L5100}/M_\odot$	—
Neighbour	None $< 15''$	$\log M_{\text{H}\alpha}/M_\odot$	$7.17 \pm 0.06$
SMSS $\langle r_6'' \text{ap} \rangle$	$16.72 \pm 0.07$	$\log M_{\text{H}\beta}/M_\odot$	—
2MASS $K_{\text{ext}}$	$12.55 \pm 0.09$	$\log M_{[\text{O III}]} / M_\odot$	—



## Emission Line Measurements

Line	$\log L$ (erg s $^{-1}$ )	FWHM (km s $^{-1}$ )	$\sigma$ (km s $^{-1}$ )	EW (Å)
H $\gamma$ Narrow	—	—	—	—
<b>H<math>\gamma</math> Broad</b>	—	—	—	—
[O III] 4364	$39.22 \pm 0.40$	$345 \pm 62$	$146 \pm 25$	$2.01 \pm 1.47$
He II Narrow	$39.19 \pm 0.40$	$345 \pm 62$	$146 \pm 25$	$2.21 \pm 1.57$
<b>He II Broad</b>	<b><math>39.94 \pm 0.30</math></b>	<b><math>2899 \pm 62</math></b>	<b><math>1231 \pm 25</math></b>	<b><math>12.51 \pm 4.70</math></b>
H $\beta$ Narrow	$39.95 \pm 0.20$	$398 \pm 70$	$464 \pm 57$	$14.26 \pm 3.47$
<b>H<math>\beta</math> Broad</b>	$< 40.49$	—	—	—
[O III] 5007	$40.33 \pm 0.08$	$398 \pm 70$	$464 \pm 57$	$35.81 \pm 3.91$
He I Narrow	—	—	—	—
<b>He I Broad</b>	—	—	—	—
[O I] 6300	$39.39 \pm 0.22$	$345 \pm 62$	$146 \pm 25$	$7.40 \pm 2.21$
H $\alpha$ Narrow	$40.51 \pm 0.02$	$345 \pm 62$	$146 \pm 25$	$105.89 \pm 2.91$
<b>H<math>\alpha</math> Broad</b>	<b><math>40.85 \pm 0.04</math></b>	<b><math>4797 \pm 163</math></b>	<b><math>1807 \pm 25</math></b>	<b><math>233.67 \pm 11.46</math></b>
[N II] 6585	$40.33 \pm 0.03$	$345 \pm 62$	$146 \pm 25$	$71.35 \pm 2.77$
[S II] 6718	$39.97 \pm 0.07$	$345 \pm 62$	$146 \pm 25$	$32.57 \pm 3.11$
[S II] 6732	$39.85 \pm 0.09$	$345 \pm 62$	$146 \pm 25$	$24.94 \pm 3.17$

## Emission Summary

H $\alpha$ broad SNR	1.31
H $\beta$ broad SNR	0.54
H $\gamma$ broad SNR	0.00
AGN frac	0.09
Host frac	0.91
$\log L_{5100, \text{Host}}$	43.44
Fe II/H $\beta$	—
Fe II/[O III]	1.76

## Quality Flags

spurious_hab/hbb	0/0
15100	2
balmer	2
balmer_snr	2
hb_width	2
balmer_width	2