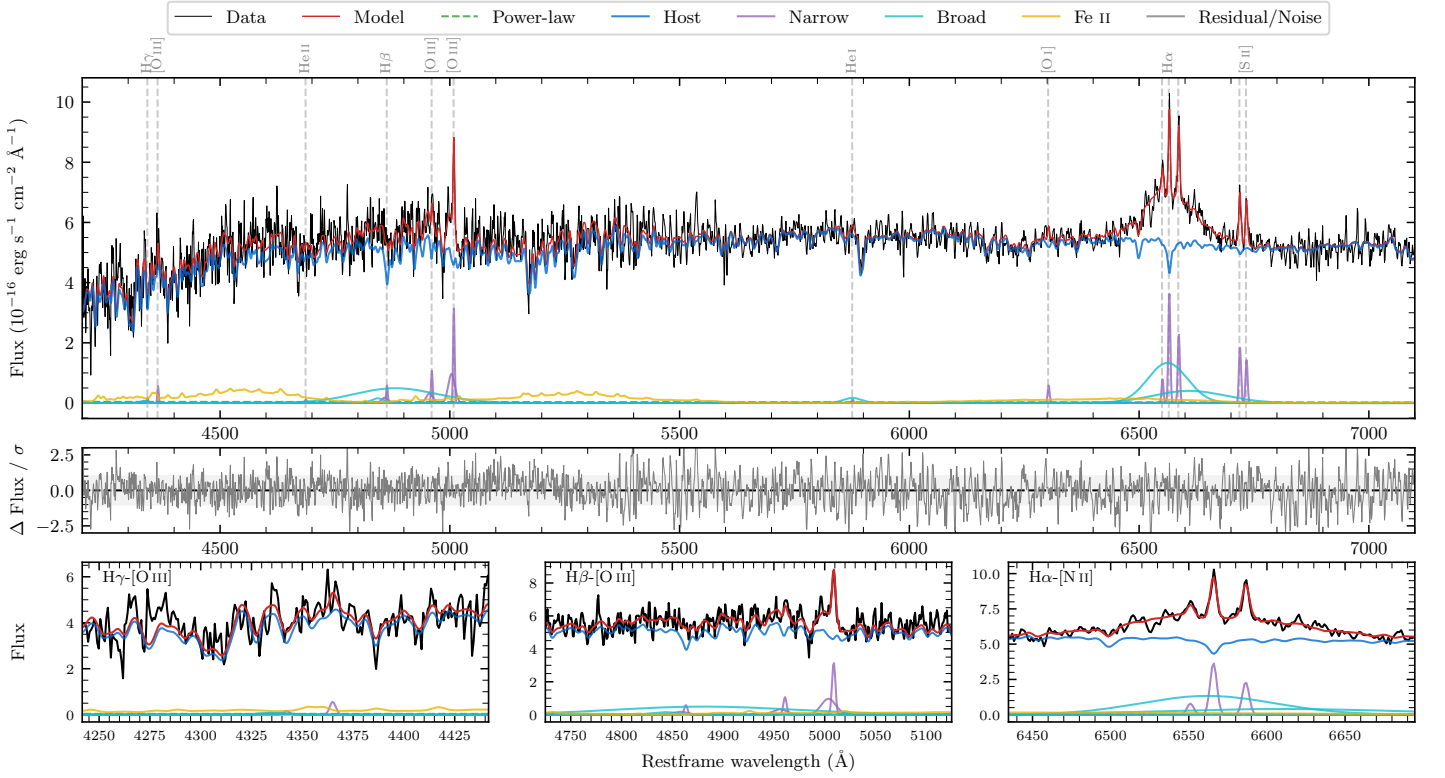
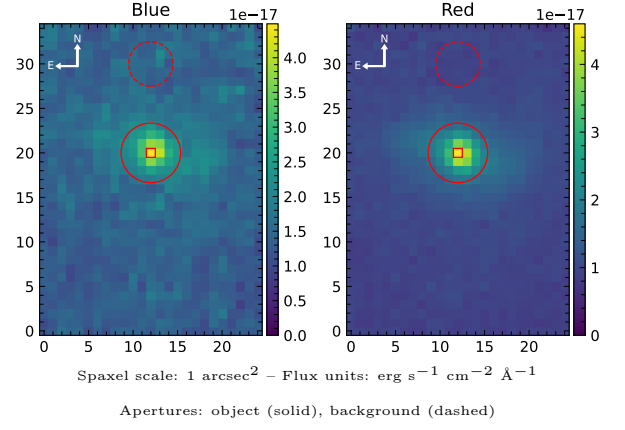


# LEDA 1005883

Spectrum ID	5042820_sp1	Spectrum type	Sy 1.5+
Alt name	g2133443-081616	Quality flag	good
$z$	0.0529	AGN reference	6dFGS
RA, Dec	323.4344, -8.2710	MW $E(B - V)$	0.036
MJD	60909.53	Power law $\alpha_\nu$	$-0.74 \pm 0.67$
SNR/ $\text{\AA}$ B/R	9.4/20.9	$\log L_{5100, \text{AGN}}$	$41.02 \pm 0.62$
Obs airmass	1.11	$\log H\beta_{\text{Br}}/[\text{O III}]$	$< 0.20$
SMSS ID	5042820	$\log M_{L5100}/M_\odot$	—
Neighbour	None $< 15''$	$\log M_{H\alpha}/M_\odot$	$7.46 \pm 0.04$
SMSS $\langle r_6''_{\text{ap}} \rangle$	$16.66 \pm 0.05$	$\log M_{H\beta}/M_\odot$	—
2MASS $K_{\text{ext}}$	$12.74 \pm 0.15$	$\log M_{[\text{O III}]} / M_\odot$	—



## Emission Line Measurements

Line	$\log L$ (erg s $^{-1}$ )	FWHM (km s $^{-1}$ )	$\sigma$ (km s $^{-1}$ )	EW ( $\text{\AA}$ )
H $\gamma$ Narrow	—	—	—	—
<b>H<math>\gamma</math> Broad</b>	—	—	—	—
[O III] 4364	$39.16 \pm 0.34$	$239 \pm 62$	$100 \pm 25$	$57.16 \pm 37.29$
He II Narrow	—	—	—	—
<b>He II Broad</b>	—	—	—	—
H $\beta$ Narrow	$39.58 \pm 0.23$	$285 \pm 65$	$363 \pm 31$	$174.40 \pm 67.10$
<b>H<math>\beta</math> Broad</b>	$< 40.53$	—	—	—
[O III] 5007	$40.33 \pm 0.05$	$285 \pm 65$	$363 \pm 31$	$1012.63 \pm 70.91$
He I Narrow	$38.62 \pm 0.48$	$239 \pm 62$	$100 \pm 25$	$24.42 \pm 22.67$
<b>He I Broad</b>	<b><math>39.77 \pm 0.18</math></b>	<b><math>2411 \pm 63</math></b>	<b><math>1024 \pm 25</math></b>	<b><math>340.35 \pm 75.56</math></b>
[O I] 6300	$39.34 \pm 0.13$	$239 \pm 62$	$100 \pm 25$	$137.21 \pm 24.57$
H $\alpha$ Narrow	$40.14 \pm 0.03$	$239 \pm 62$	$100 \pm 25$	$928.87 \pm 31.28$
<b>H<math>\alpha</math> Broad</b>	<b><math>41.19 \pm 0.02</math></b>	<b><math>5277 \pm 133</math></b>	<b><math>2206 \pm 61</math></b>	<b><math>10426.21 \pm 176.73</math></b>
[N II] 6585	$39.95 \pm 0.04$	$239 \pm 62$	$100 \pm 25$	$591.04 \pm 31.03$
[S II] 6718	$39.87 \pm 0.04$	$239 \pm 62$	$100 \pm 25$	$505.96 \pm 27.74$
[S II] 6732	$39.75 \pm 0.05$	$239 \pm 62$	$100 \pm 25$	$388.77 \pm 27.88$

## Emission Summary

H $\alpha$ broad SNR	3.14
H $\beta$ broad SNR	0.29
H $\gamma$ broad SNR	0.00
AGN frac	0.01
Host frac	0.99
$\log L_{5100, \text{Host}}$	43.21
Fe II/H $\beta$	—
Fe II/[O III]	—

## Quality Flags

spurious_hab/hbb	0/2
15100	2
balmer	2
balmer_snr	2
hb_width	2
balmer_width	2