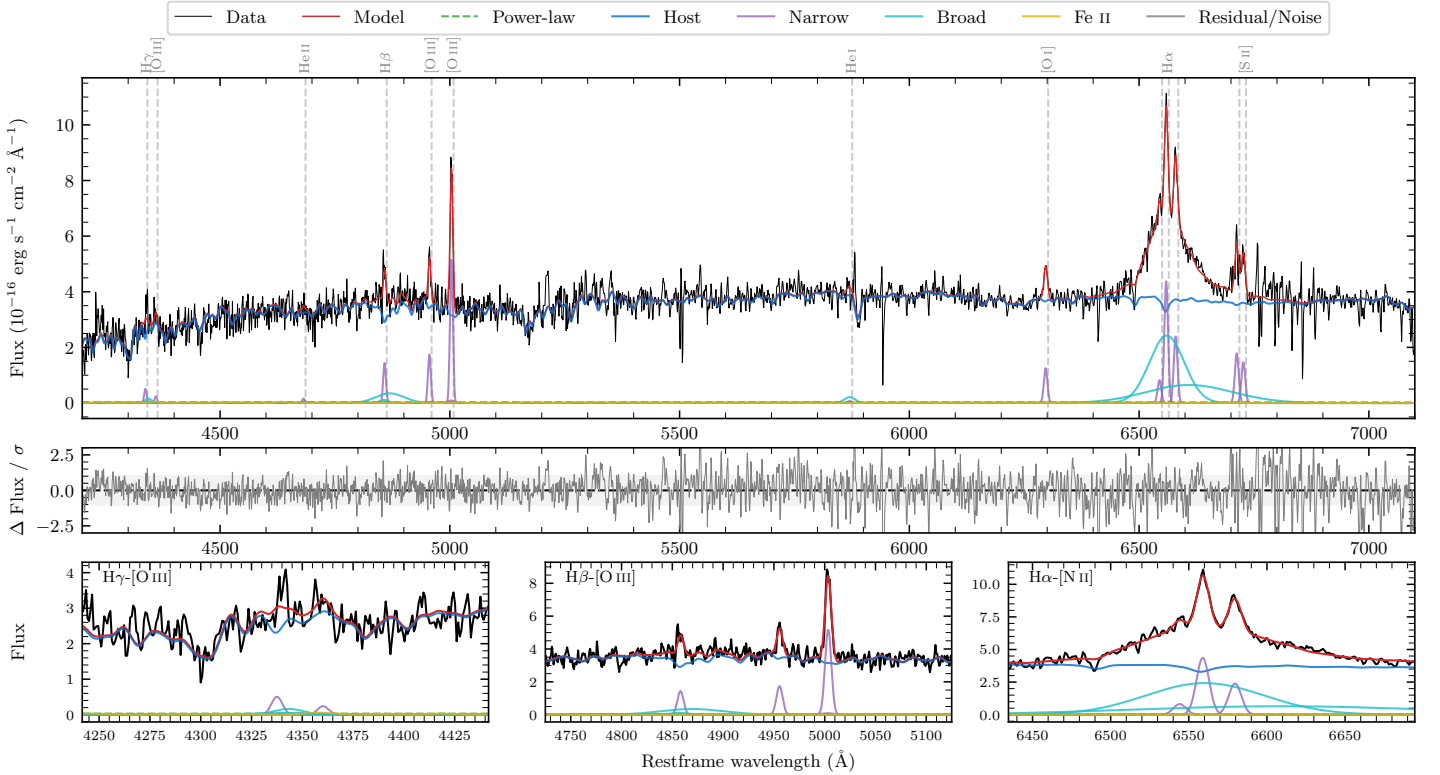
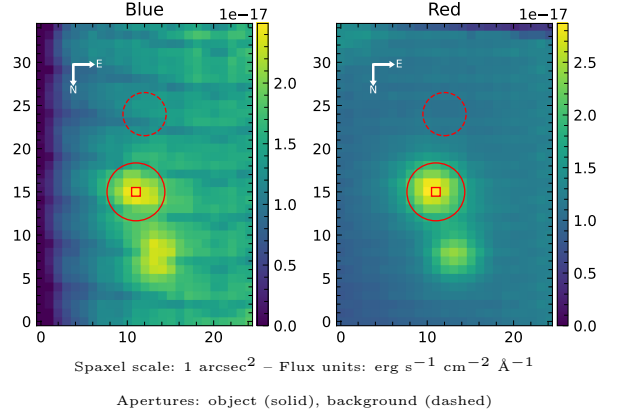


LEDA 73264

Spectrum ID	503920932_sp3	Spectrum type	Sy 1.5
Alt name	g0008461-464911	Quality flag	good
z	0.0700	AGN reference	6dFGS
RA, Dec	2.1920, -46.8196	MW $E(B - V)$	0.015
MJD	60473.8	Power law α_ν	-1.34 ± 0.29
SNR/ \AA B/R	6.7/16.2	$\log L_{5100, \text{AGN}}$	41.25 ± 0.64
Obs airmass	1.09	$\log H\beta_{\text{Br}}/[\text{O III}]$	-0.14 ± 0.11
SMSS ID	503920932	$\log M_{L5100}/M_\odot$	6.87 ± 0.32
Neighbour	7.5", 503920933	$\log M_{\text{H}\alpha}/M_\odot$	7.66 ± 0.02
SMSS $\langle r_6^{\text{ap}} \rangle$	16.77 ± 0.10	$\log M_{\text{H}\beta}/M_\odot$	7.36 ± 0.16
2MASS K_{ext}	13.14 ± 0.12	$\log M_{[\text{O III}]} / M_\odot$	7.54 ± 0.15



Emission Line Measurements

Line	$\log L$ (erg s ⁻¹)	FWHM (km s ⁻¹)	σ (km s ⁻¹)	EW (Å)
H γ Narrow	39.68 ± 0.32	442 ± 63	203 ± 30	120.47 ± 69.87
Hγ Broad	—	—	—	—
[O III] 4364	39.33 ± 0.43	437 ± 62	184 ± 25	55.60 ± 48.12
He II Narrow	—	—	—	—
He II Broad	—	—	—	—
H β Narrow	40.18 ± 0.11	442 ± 63	203 ± 30	412.41 ± 66.36
Hβ Broad	40.61 ± 0.11	3767 ± 619	1554 ± 52	1085.21 ± 148.24
[O III] 5007	40.74 ± 0.03	442 ± 63	203 ± 30	1565.61 ± 72.42
He I Narrow	—	—	—	—
He I Broad	39.91 ± 0.21	1384 ± 62	587 ± 25	255.72 ± 64.18
[O I] 6300	40.20 ± 0.04	437 ± 62	184 ± 25	529.11 ± 30.09
H α Narrow	40.76 ± 0.02	437 ± 62	184 ± 25	1978.80 ± 34.99
Hα Broad	41.70 ± 0.01	4669 ± 86	2260 ± 45	17195.50 ± 176.66
[N II] 6585	40.50 ± 0.03	437 ± 62	184 ± 25	1091.64 ± 34.11
[S II] 6718	40.38 ± 0.04	437 ± 62	184 ± 25	841.18 ± 39.82
[S II] 6732	40.30 ± 0.04	437 ± 62	184 ± 25	693.08 ± 38.05

Emission Summary

H α broad SNR	6.46
H β broad SNR	1.03
H γ broad SNR	0.56
AGN frac	0.01
Host frac	0.99
$\log L_{5100, \text{Host}}$	43.31
Fe II/H β	—
Fe II/[O III]	—

Quality Flags

spurious_hab/hbb	0/0
15100	2
balmer	1
balmer_snr	2
hb_width	0
balmer_width	2