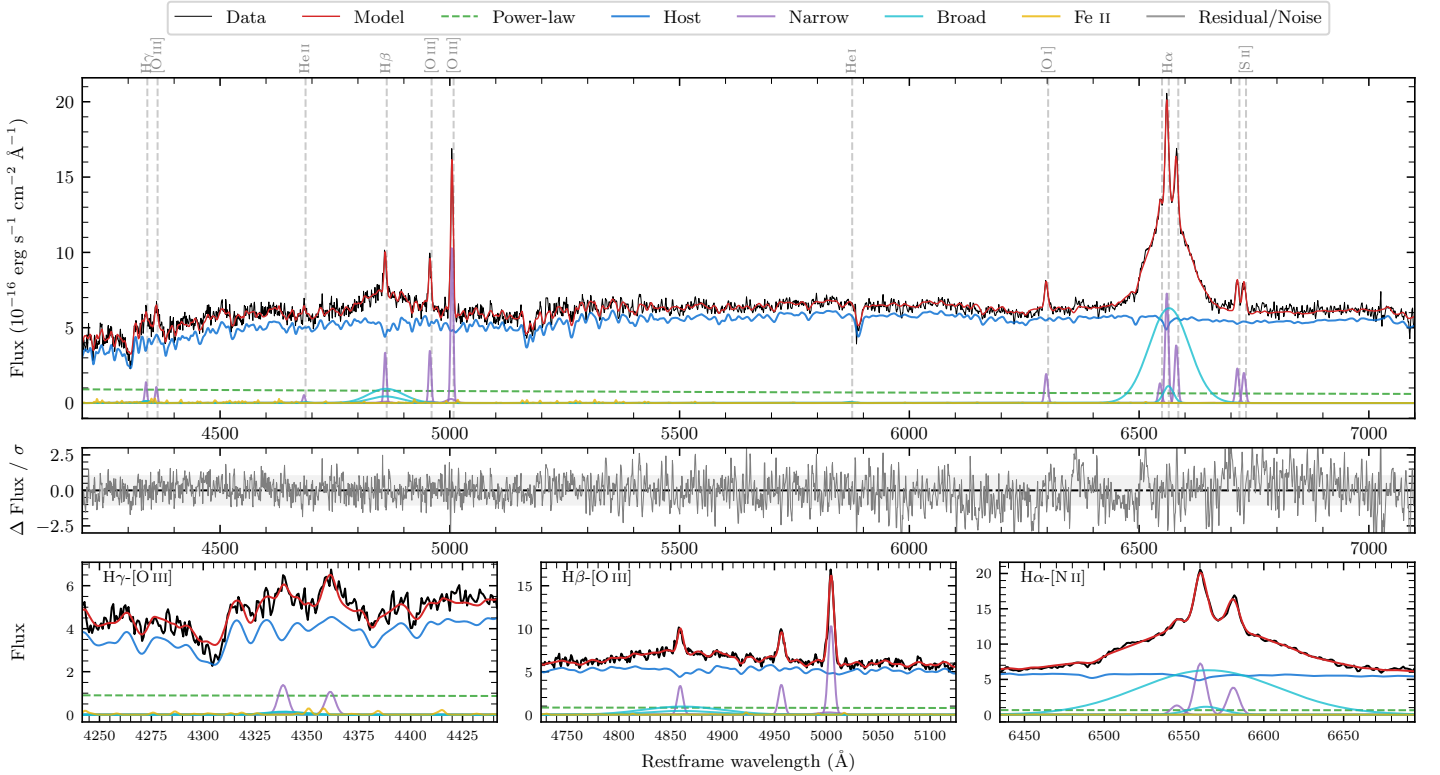
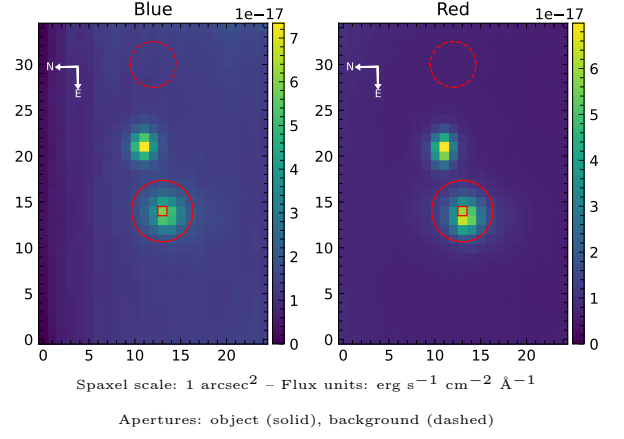


LEDA 73264

Spectrum ID	503920932_sp2	Spectrum type	Sy 1.5
Alt name	g0008461-464911	Quality flag	good
z	0.0700	AGN reference	6dFGS
RA, Dec	2.1920, -46.8196	MW $E(B - V)$	0.015
MJD	59438.69	Power law α_ν	-1.22 ± 0.45
SNR/ \AA B/R	14.2/32.4	$\log L_{5100, \text{AGN}}$	42.69 ± 0.10
Obs airmass	1.04	$\log H\beta_{\text{Br}}/[\text{O III}]$	0.21 ± 0.03
SMSS ID	503920932	$\log M_{L5100}/M_\odot$	7.79 ± 0.06
Neighbour	7.5", 503920933	$\log M_{\text{H}\alpha}/M_\odot$	7.71 ± 0.02
SMSS $\langle r_6''_{\text{ap}} \rangle$	16.77 ± 0.10	$\log M_{\text{H}\beta}/M_\odot$	7.93 ± 0.04
2MASS K_{ext}	13.14 ± 0.12	$\log M_{[\text{O III}]} / M_\odot$	7.97 ± 0.04



Emission Line Measurements

Line	$\log L$ (erg s ⁻¹)	FWHM (km s ⁻¹)	σ (km s ⁻¹)	EW (Å)
H γ Narrow	40.07 ± 0.14	400 ± 63	239 ± 43	10.97 ± 2.48
Hγ Broad	—	—	—	—
[O III] 4364	39.93 ± 0.13	393 ± 63	165 ± 25	7.84 ± 1.42
He II Narrow	39.65 ± 0.24	393 ± 63	165 ± 25	4.40 ± 1.28
He II Broad	—	—	—	—
H β Narrow	40.51 ± 0.04	400 ± 63	239 ± 43	32.62 ± 2.36
Hβ Broad	41.22 ± 0.03	5300 ± 161	1973 ± 57	168.11 ± 5.05
[O III] 5007	41.01 ± 0.02	400 ± 63	239 ± 43	106.24 ± 2.59
He I Narrow	—	—	—	—
He I Broad	39.38 ± 0.37	1179 ± 62	500 ± 25	2.82 ± 1.50
[O I] 6300	40.34 ± 0.02	393 ± 63	165 ± 25	27.17 ± 0.88
H α Narrow	40.94 ± 0.01	393 ± 63	165 ± 25	109.98 ± 1.10
Hα Broad	41.97 ± 0.01	4097 ± 96	1681 ± 25	1199.16 ± 3.75
[N II] 6585	40.66 ± 0.02	393 ± 63	165 ± 25	58.59 ± 1.08
[S II] 6718	40.44 ± 0.02	393 ± 63	165 ± 25	36.13 ± 1.11
[S II] 6732	40.39 ± 0.03	393 ± 63	165 ± 25	31.83 ± 1.09

Emission Summary

H α broad SNR	19.19
H β broad SNR	3.63
H γ broad SNR	0.95
AGN frac	0.13
Host frac	0.87
$\log L_{5100, \text{Host}}$	43.50
Fe II/H β	0.10
Fe II/[O III]	0.16

Quality Flags

spurious_hab/hbb	0/0
15100	2
balmer	0
balmer_snr	2
hb_width	0
balmer_width	0