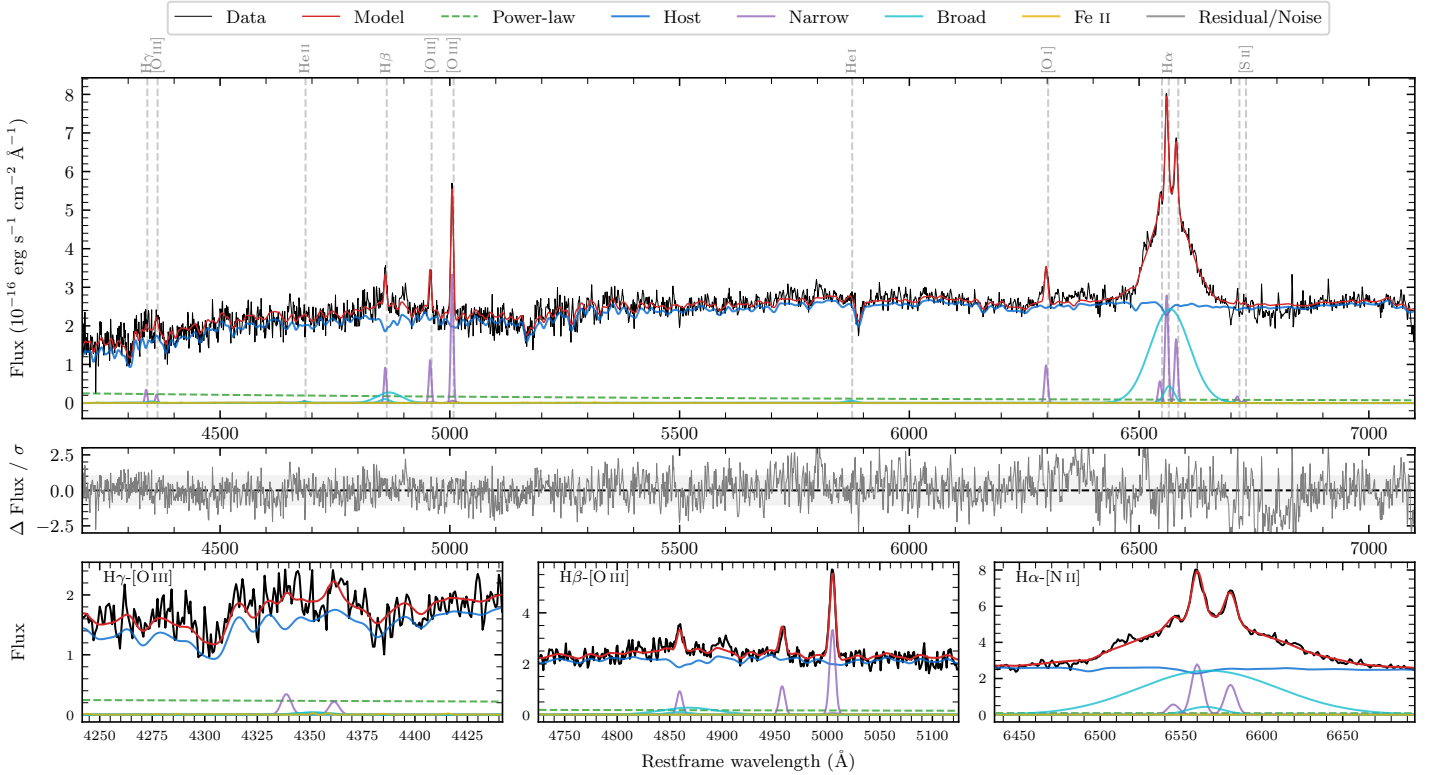
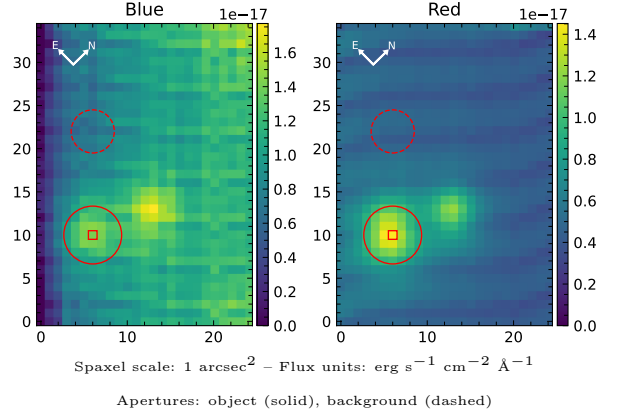


# LEDA 73264

Spectrum ID	503920932_sp1	Spectrum type	Sy 1.5
Alt name	g0008461-464911	Quality flag	good
$z$	0.0700	AGN reference	6dFGS
RA, Dec	2.1920, -46.8196	MW $E(B-V)$	0.015
MJD	59426.58	Power law $\alpha_\nu$	$0.40 \pm 0.12$
SNR/ $\text{\AA}$ B/R	8.2/20.6	$\log L_{5100, \text{AGN}}$	$41.99 \pm 0.08$
Obs airmass	1.43	$\log H\beta_{\text{Br}}/[\text{O III}]$	$-0.05 \pm 0.08$
SMSS ID	503920932	$\log M_{L5100}/M_\odot$	$7.05 \pm 0.15$
Neighbour	7.5", 503920933	$\log M_{H\alpha}/M_\odot$	$7.45 \pm 0.03$
SMSS $\langle r_6^{\text{ap}} \rangle$	$16.77 \pm 0.10$	$\log M_{H\beta}/M_\odot$	$7.14 \pm 0.15$
2MASS $K_{\text{ext}}$	$13.14 \pm 0.12$	$\log M_{[\text{O III}]} / M_\odot$	$7.27 \pm 0.15$



## Emission Line Measurements

Line	$\log L$ (erg s <sup>-1</sup> )	FWHM (km s <sup>-1</sup> )	$\sigma$ (km s <sup>-1</sup> )	EW (Å)
H $\gamma$ Narrow	$39.45 \pm 0.26$	$388 \pm 63$	$175 \pm 28$	$9.79 \pm 4.66$
<b>H<math>\gamma</math> Broad</b>	—	—	—	—
[O III] 4364	$39.23 \pm 0.36$	$383 \pm 62$	$162 \pm 25$	$6.03 \pm 3.40$
He II Narrow	—	—	—	—
<b>He II Broad</b>	—	—	—	—
H $\beta$ Narrow	$39.93 \pm 0.09$	$388 \pm 63$	$175 \pm 28$	$38.48 \pm 5.40$
<b>H<math>\beta</math> Broad</b>	<b><math>40.45 \pm 0.08</math></b>	<b><math>3183 \pm 527</math></b>	<b><math>1320 \pm 59</math></b>	<b><math>128.27 \pm 12.39</math></b>
[O III] 5007	$40.50 \pm 0.02$	$388 \pm 63$	$175 \pm 28$	$154.02 \pm 6.02$
He I Narrow	—	—	—	—
<b>He I Broad</b>	<b><math>39.42 \pm 0.30</math></b>	<b><math>1463 \pm 62</math></b>	<b><math>621 \pm 25</math></b>	<b><math>19.29 \pm 7.11</math></b>
[O I] 6300	$40.04 \pm 0.04$	$383 \pm 62$	$162 \pm 25$	$94.74 \pm 4.45$
H $\alpha$ Narrow	$40.51 \pm 0.02$	$383 \pm 62$	$162 \pm 25$	$308.35 \pm 4.85$
<b>H<math>\alpha</math> Broad</b>	<b><math>41.56 \pm 0.01</math></b>	<b><math>4034 \pm 123</math></b>	<b><math>1646 \pm 25</math></b>	<b><math>3422.80 \pm 17.51</math></b>
[N II] 6585	$40.29 \pm 0.02$	$383 \pm 62$	$162 \pm 25$	$185.06 \pm 4.94$
[S II] 6718	$39.31 \pm 0.18$	$383 \pm 62$	$162 \pm 25$	$20.55 \pm 4.55$
[S II] 6732	$38.83 \pm 0.41$	$383 \pm 62$	$162 \pm 25$	$6.77 \pm 4.45$

## Emission Summary

H $\alpha$ broad SNR	11.31
H $\beta$ broad SNR	1.51
H $\gamma$ broad SNR	0.41
AGN frac	0.07
Host frac	0.93
$\log L_{5100, \text{Host}}$	43.11
Fe II/H $\beta$	—
Fe II/[O III]	—

## Quality Flags

spurious_hab/hbb	0/0
15100	2
balmer	1
balmer_snr	2
hb_width	0
balmer_width	2