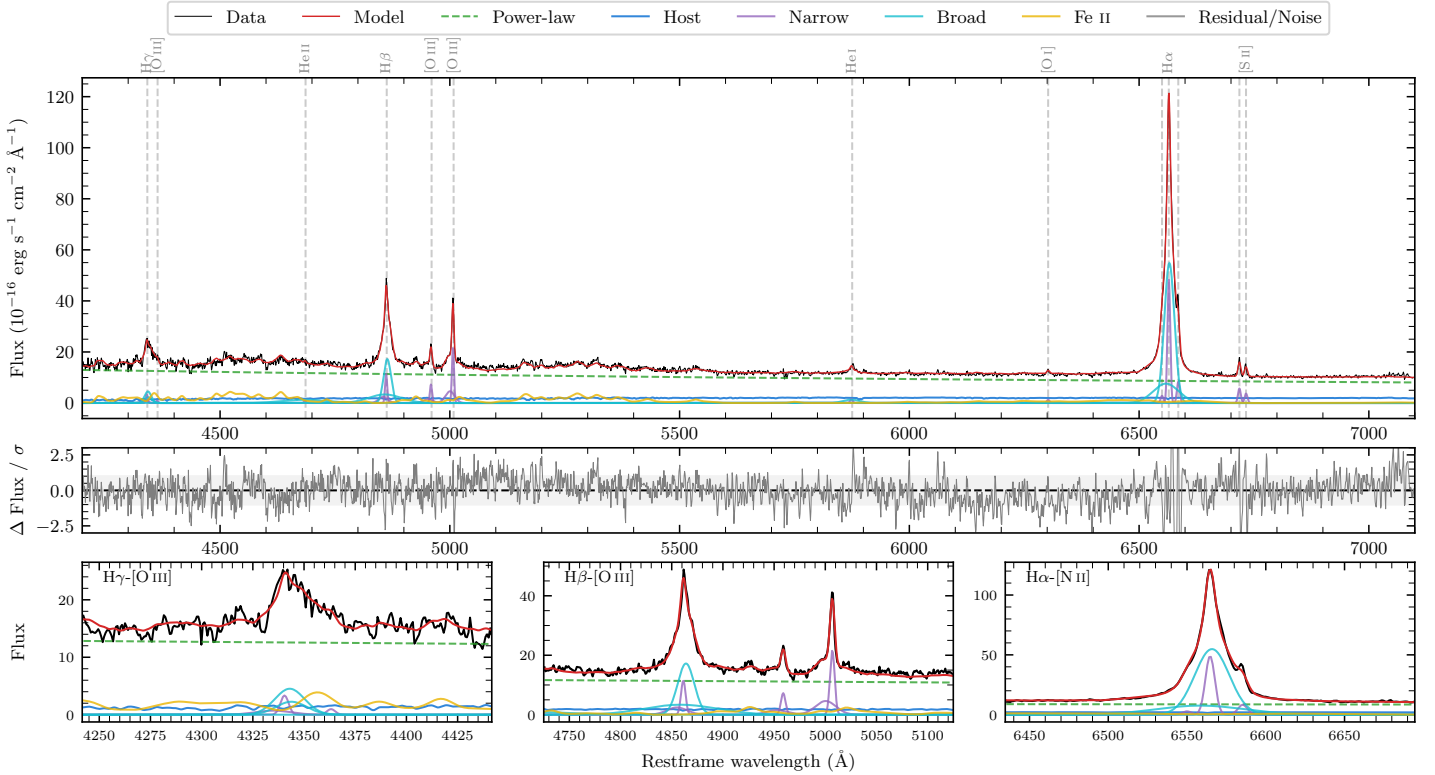
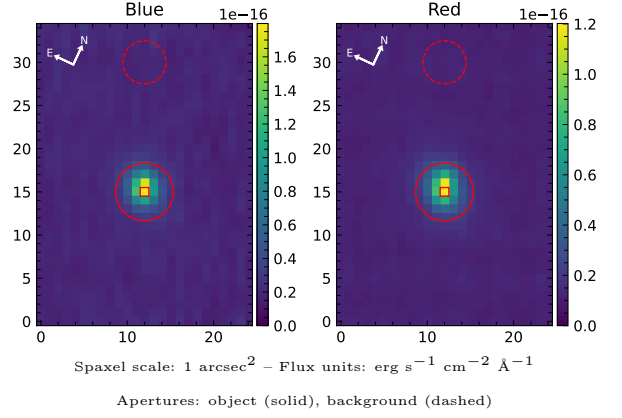


LEDA 87392

Spectrum ID	503833007_sp1	Spectrum type	Sy 1.2
Alt name	g0039159-511702	Quality flag	good
z	0.0283	AGN reference	6dFGS
RA, Dec	9.8160, -51.2838	MW $E(B - V)$	0.011
MJD	60164.76	Power law α_ν	-1.10 ± 0.04
SNR/ \AA B/R	14.6/23.1	$\log L_{5100, \text{AGN}}$	43.02 ± 0.01
Obs airmass	1.07	$\log H\beta_{\text{Br}}/[\text{O III}]$	0.43 ± 0.02
SMSS ID	503833007	$\log M_{L5100}/M_\odot$	6.73 ± 0.03
Neighbour	None $< 15''$	$\log M_{\text{H}\alpha}/M_\odot$	6.46 ± 0.05
SMSS $\langle r_6''_{\text{ap}} \rangle$	15.29 ± 0.10	$\log M_{\text{H}\beta}/M_\odot$	6.68 ± 0.04
2MASS K_{ext}	11.93 ± 0.07	$\log M_{[\text{O III}]} / M_\odot$	6.60 ± 0.05



Emission Line Measurements

Line	$\log L$ (erg s^{-1})	FWHM (km s^{-1})	σ (km s^{-1})	EW (\AA)
H γ Narrow	39.79 ± 0.16	366 ± 63	469 ± 26	2.62 ± 0.49
Hγ Broad	40.39 ± 0.05	1192 ± 63	434 ± 25	10.19 ± 0.46
[O III] 4364	38.97 ± 0.33	324 ± 63	137 ± 25	0.40 ± 0.22
He II Narrow	38.95 ± 0.31	324 ± 63	137 ± 25	0.40 ± 0.19
He II Broad	40.48 ± 0.06	7404 ± 69	3144 ± 28	13.75 ± 0.96
H β Narrow	40.38 ± 0.04	366 ± 63	469 ± 26	11.21 ± 0.42
Hβ Broad	41.10 ± 0.01	1337 ± 29	910 ± 28	58.69 ± 0.81
[O III] 5007	40.66 ± 0.01	366 ± 63	469 ± 26	22.29 ± 0.42
He I Narrow	39.32 ± 0.09	324 ± 63	137 ± 25	1.18 ± 0.13
He I Broad	40.05 ± 0.05	2131 ± 74	905 ± 30	6.35 ± 0.37
[O I] 6300	39.26 ± 0.09	324 ± 63	137 ± 25	1.09 ± 0.14
H α Narrow	40.85 ± 0.01	324 ± 63	137 ± 25	43.89 ± 0.27
Hα Broad	41.59 ± 0.01	1270 ± 63	545 ± 25	242.18 ± 1.68
[N II] 6585	40.08 ± 0.02	324 ± 63	137 ± 25	7.47 ± 0.20
[S II] 6718	39.93 ± 0.02	324 ± 63	137 ± 25	5.34 ± 0.17
[S II] 6732	39.74 ± 0.04	324 ± 63	137 ± 25	3.50 ± 0.16

Emission Summary

H α broad SNR	59.27
H β broad SNR	19.60
H γ broad SNR	6.58
AGN frac	0.87
Host frac	0.13
$\log L_{5100, \text{Host}}$	42.20
Fe II/H β	1.29
Fe II/[O III]	3.48

Quality Flags

spurious_hab/hbb	0/0
15100	0
balmer	0
balmer_snr	0
hb_width	1
balmer_width	0